

-CERTIFIED CORNER RECORDATION

Corner 1/4 **Secs.** 19&20 **T.** 30N **R.** 29W **P.M., MT** **Lincoln** **County**

- I. 1903 G.L.O. Original Record by George A. Fessenden et. al.: Set a slate stone, 14x7x5 ins., 9 ins. in the ground for 1/4 sec. cor., mkd. "1/4" on W. face.

Established two bearing trees:

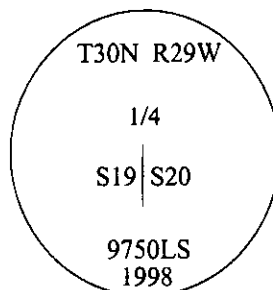
A tamarack, 10 ins. diam., bears N60 1/4°E, 56 lks. dist., mkd. "1/4 S20 BT".
A tamarack, 14 ins. diam., bears S66 1/2°W, 30 lks. dist., mkd. "1/4 S19 BT".

- II. Found stone, 14x7x5 ins., tilted out of upright position, due to tree growth next to, still firmly in ground, mkd. "1/4" on W. face and witnessed by the original bearing trees.

from which:

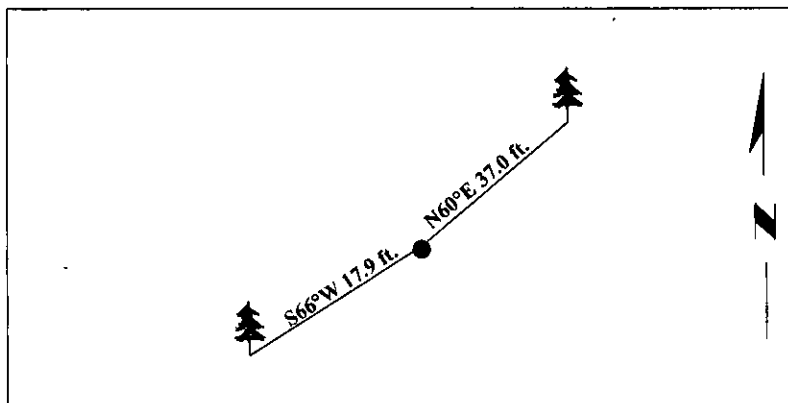
A larch, 14 ins. diam., bears N60°E, 37.0 ft. dist., with a healed face. (record)
A larch, 15 ins. diam., bears S66°W, 17.9 ft. dist., mkd. with visible scribe. (record-19.8 ft.)

- III. In the position of the found stone, determined by using dist.-dist. intersect with the found bearing trees, set a 2 1/2 in. diam. aluminum pipe, 30 ins. long, 22 ins. in the ground, with a 3 1/4 in. diam., aluminum cap, mkd. as shown, with a small collar of stone around monument.



Buried stone alongside aluminum pipe.
Painted bearing trees and attached Land Survey Monument and Bearing Tree signs.

Magnetic Declination: 20° East

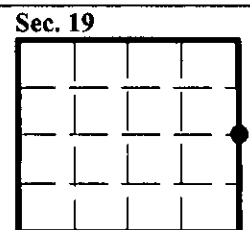


SKETCH OF CORNER

CERTIFICATION	
I. <u>Rex O. Rice</u>	certify the information shown herein is true and correct.
<u>Rex O. Rice</u>	
II. <u>Steven A. Boyer</u>	certify that this Corner Record correctly represents work performed by me or under my direction in compliance with the "Corner Recordation Act" (70-22-101, et seq., M.C.A.)
<u>Steven A. Boyer</u>	
Signature of Surveyor & Seal	
Date: <u>6/05/98</u>	
Reg. No.: <u>9750LS</u>	
Employer: <u>U.S. FOREST SERVICE</u>	

Office of Clerk and Recorder, County of Lincoln. This "corner record" was filed for record on 11-18-98 and was noted on the cross-index plat and is assigned page No. 10272 in book No. _____.

Coral M. Cumming By DLR
County Official



● - corner this sheet