

-CERTIFIED CORNER RECORDATION

Corner 1/4 Secs. 19&30 T. 30N R. 29W P.M., MT Lincoln County

I. 1903 G.L.O. Original Record by George A. Fessenden et. al.: Set a limestone, 14x11x5 ins., 9 ins. in the ground for 1/4 sec. cor., mkd. "1/4" on N. face.

Established two bearing trees:

- A tamarack, 16 ins. diam., bears S32°E, 58 lks. dist., mkd. "1/4 S30 BT".
- A tamarack, 15 ins. diam., bears N32°W, 45 lks. dist., mkd. "1/4 S19 BT".

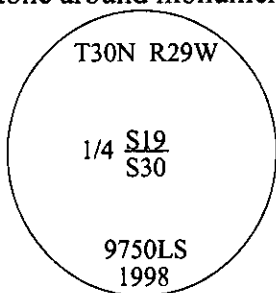
1976 Corner Card Record by Gary Crismon, U.S.F.S. Survey Technician: I found the original rock to be in good condition and mkd. as described in the original record and witnessed by the remains of the original bearing trees.

II. Found stone, lying on it's side, under dirt and duff, 14x11x5 ins., mkd. "1/4" on one face and witnessed by the remains of the original bearing trees.

from which:

- A root crown with fallen rotten larch alongside, bears S32°E, 38.3 ft. dist., no visible scribe.
- A fallen larch, 15 ins. diam., bears N24°W, 37.3 ft. dist., mkd. "1/4 S19 BT".

III. In the position of the found stone, determined by using dist.-dist. intersect with the found bearing trees, set a 2 1/2 in. diam. aluminum pipe, 30 ins. long, 20 ins. in the ground, with a 3 1/4 in. diam., aluminum cap, mkd. as shown, with a mound of stone around monument.



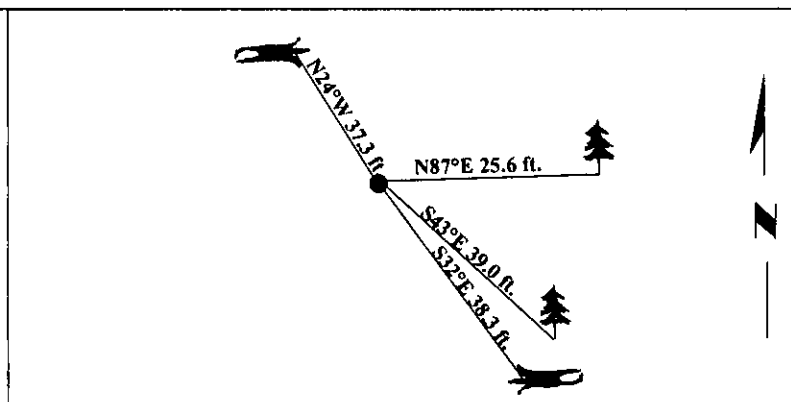
Established two bearing trees:

- A fir, 11 ins. diam., bears N87°E, 25.6 ft. dist., mkd. "1/4 S19 BT".
- A fir, 11 ins. diam., bears S43°W, 39.0 ft. dist., mkd. "1/4 S30 BT".

Buried stone alongside aluminum pipe.

Painted bearing trees and attached Land Survey Monument and Bearing Tree signs.

Magnetic Declination: 20° East



SKETCH OF CORNER

CERTIFICATION	
I. <u>Rex O. Rice</u>	certify the information shown herein is true and correct.
<i>Rex O. Rice</i>	
I. <u>Steven A. Boyer</u>	certify that this Corner Record correctly represents work performed by me, or under my direction in compliance with the "Corner Recordation Act", (70-22-101, et seq., M.C.A.)
<i>Steven A. Boyer</i>	
Date: <u>9/28/98</u>	Signature of Surveyor & Seal: <u>750LS</u>
Reg. No.: <u>9750LS</u>	
Employer: <u>U.S. FOREST SERVICE</u>	

Office of Clerk and Recorder, County of Lincoln. This "corner record" was filed for record on 11-18-98 and was noted on the cross-index plat and is assigned page No. 10271 in book No. _____.

Carol M. Cummins Esq. PLLC
County Official

