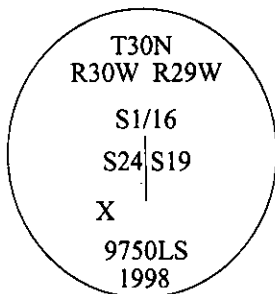


# -CERTIFIED CORNER RECORDATION

Corner S1/16 Secs. 19&24 T. 30N R. 29W P.M., MT Lincoln County

- I. No previous history.
- II. No evidence found.
- III. Set by survey, a 2 1/2 in. diam., aluminum pipe, 30 ins. long, 20 ins. in the ground, with a 3 1/4 in. diam. aluminum cap, mkd. as shown, with an "X" for the exact corner point, and a collar of stone surrounds the monument.

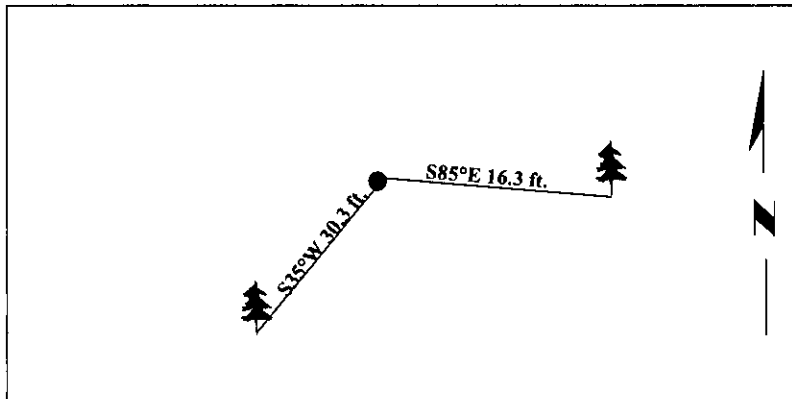


Established two bearing trees:

- A fir, 11 ins. diam., bears S85°E, 16.3 ft. dist., mkd. "S 1/16 S19 BT".
- A fir, 11 ins. diam., bears S35°W, 30.3 ft. dist., mkd. "S 1/16 S24 BT".

Painted bearing trees and attached Land Survey Monument and Bearing Tree signs.

Magnetic Declination: 20° East



SKETCH OF CORNER

CERTIFICATION

I, Rex O. Rice  
certify the information shown herein is true and correct.

Rex O. Rice

I, Steven A. Boyer  
certify that this Corner Record correctly represents work performed by me or under my direction in compliance with the "Corner Recordation Act" (70-22-101, et seq., M.C.A.)

Steven A. Boyer  
Signature of Surveyor & Seal

Date: 9/29/98

Reg. No.: 9750LS

Employer: U.S. FOREST SERVICE

MONTANA  
STEVEN A. BOYER  
9750LS  
REGISTERED  
LAND SURVEYOR

Office of Clerk and Recorder, County of Lincoln. This "corner record" was filed for record on 1-18-98 and was noted on the cross-index plat and is assigned page No. 10270 in book No. \_\_\_\_\_

Coral M. Cummings  
County Official

