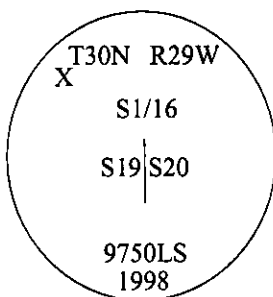


-CERTIFIED CORNER RECORDATION

Corner S1/16 **Secs.** 19&20 **T.** 30N **R.** 29W **P.M., MT** **Lincoln** **County**

- I. No previous history.
- II. No evidence found.
- III. Set by survey, a 3/4 in. diam., aluminum rod, 30 ins. long, 24 ins. in the ground, with a 3 1/4 in. diam. aluminum cap, mkd. as shown, with an "X" for the exact corner point, and a mound of stone surrounds the monument.

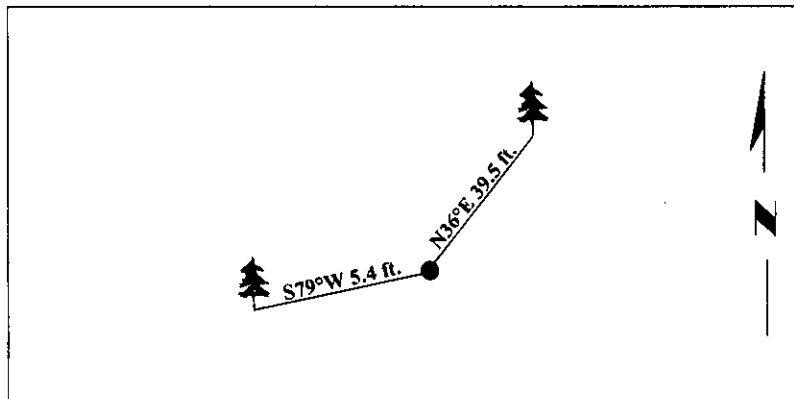


Established two bearing trees:

- A fir, 23 ins. diam., bears N36°E, 39.5 ft. dist., mkd. "S 1/16 S20 BT".
A fir, 9 ins. diam., bears S79°W, 5.4 ft. dist., mkd. "S 1/16 S19 BT".

Painted bearing trees and attached Land Survey Monument and Bearing Tree signs.

Magnetic Declination: 20° East



SKETCH OF CORNER

CERTIFICATION	
I, <u>Rex O. Rice</u>	
certify the information shown herein is true and correct.	
<u>Rex O. Rice</u>	
I, <u>Steven A. Boyer</u>	
certify that this Corner Record correctly represents work performed by me or under my direction in compliance with the "Corner Recordation Act" (70-22-101 et seq., M.C.A.)	
<u>Steven A. Boyer</u>	
Signature of Surveyor & Seal	
Date: <u>9/30/98</u>	
Reg. No.: <u>9750LS</u>	
Employer: <u>U.S. FOREST SERVICE</u>	

Office of Clerk and Recorder, County of Lincoln. This "corner record" was filed for record on 11-18-98 and was noted on the cross-index plat and is assigned page No. 10269 in book No. _____.

Coral M. Cummins
County Official

