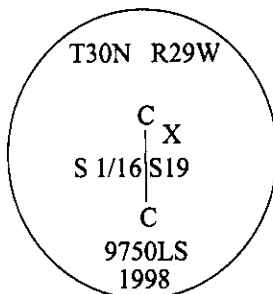


**-CERTIFIED CORNER RECORDATION**

**Corner** CS1/16    **Sec.** 19    **T.** 30N    **R.** 29W    **P.M., MT**    **Lincoln**    **County**

- I. No previous history.
- II. No evidence found.
- III. Set by survey, a 3/4 in. diam., aluminum rod, 30 ins. long, 26 ins. in the ground, with a 3 1/4 in. diam. aluminum cap, mkd. as shown, with an "X" for the exact corner point, and small collar of stone surrounds the monument.

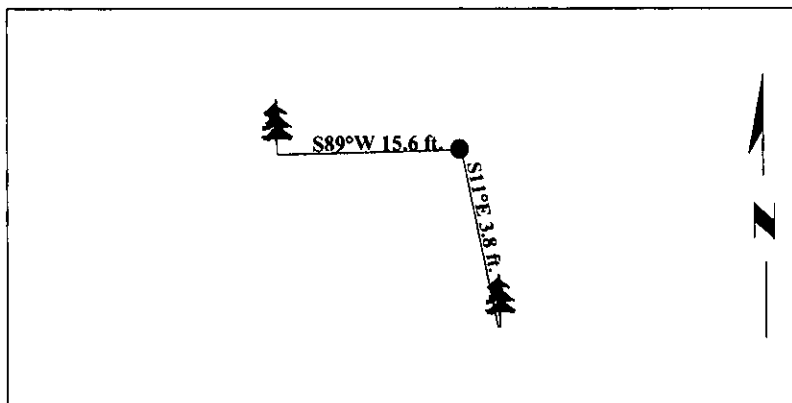


Established two bearing trees:

- A fir, 11 ins. diam., bears S11°E, 3.8 ft. dist., mkd. "CS 1/16 S19 BT".  
A fir, 12 ins. diam., bears S89°W, 15.6 ft. dist., mkd. "CS 1/16 S19 BT".

Painted bearing trees and attached Land Survey Monument and Bearing Tree signs.

Magnetic Declination: 20° East



**SKETCH OF CORNER**

CERTIFICATION	
I. <u>Rex O. Rice</u>	certify the information shown herein is true and correct.
<u>Rex O. Rice</u>	
II. <u>Steven A. Boyer</u>	certify that this Corner Record correctly represents work performed by me or under my direction in compliance with the "Corner Recordation Act" (70-22-101, et seq., M.C.A.)
<u>Steven A. Boyer</u>	
Date: <u>9/30/98</u>	Signature of Surveyor & 96a1
Reg. No.: <u>9750LS</u>	
Employer: <u>U.S. FOREST SERVICE</u>	

Office of Clerk and Recorder, County of Lincoln. This "corner record" was filed for record on 11-18-98 and was noted on the cross-index plat and is assigned page No. 10268 in book No.                     .  
Coral M. Cumming By RCB  
County Official

