

-CERTIFIED CORNER RECORDATION

Corner **Sec. Cor.** **Secs.** **13,18,19,24** **T.** **30N** **R.** **29W** **P.M., MT** **Lincoln** **County**

I. 1898 G.L.O. Record by Paul S.A. Bickel: Set a slate stone, 20x8x6 ins., 15 ins. in the ground for the cor. of secs. 13,18,19,24, mkd. with 3 notches on N. and S edges.

Established four bearing trees:

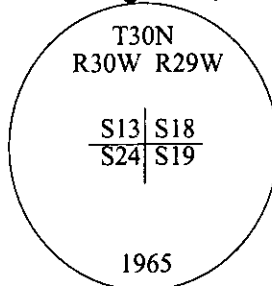
A tamarack, 3 ins. diam., bers N52°E, 46 lks. dist., mkd. "T30N R29W S18 BT".

A tamarack, 3 ins. diam., bears S21°45'E, 28 lks. dist., mkd. "T30N R29W S19 BT".

A fir, 3 ins. diam, bears S37°15'W, 39 lks. dist., mkd. "T30N R30W S24 BT".

A tamarack, 3 ins. diam., bears N70°20'W, 71 lks. dist., mkd. "T30N R30W S13 BT".

1965 B.L.M. Remonumentation by Duane G. Lindenberg: The cor. of secs. 13,18,19 and 24, on the W. bdy. of the Tp., monumented with a slate stone, 15x10x8 ins., firmly set, mkd. with 3 notches on the N. and S. edges and witnessed by the remains of the original bearing trees. At the corner point, set an iron post, 30 ins. long, 2 1/2 ins. diam., 26 ins. in the ground, with brass cap mkd. as shown.



Established two new bearing trees and bury the original stone alongside the iron post.

II. Found a 3 in. diam. brass cap, firmly set, protruding 4 ins. above the ground, mkd. as shown.

from which:

A larch, 7 ins. diam., bears N11°E, 15.5 ft. dist., with a healed face. (BLM-rec.-23 lks.-15.2 ft.)

A larch snag, 6 ins. diam., bears S69°E, 21.8 ft. dist., with visible scribe. (BLM-record)

A larch snag, 11 ins. diam., bears S37°W, 26.7 ft. dist., mkd. with visible scribe. (GLO-rec.-39 lks.-25.7 ft.)

A larch, 11 ins. diam., bears N70°W, 47.5 ft. dist., with a healed face. (GLO-rec.-71 lks.-46.9 ft.)

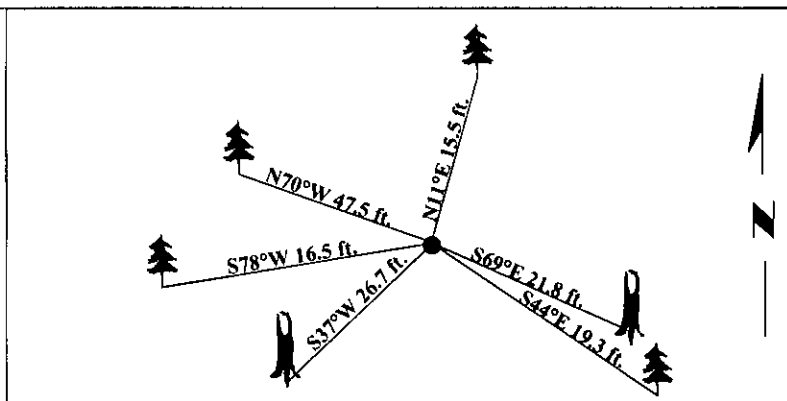
III. Established two new bearing trees:

A fir, 9 ins. diam., bears S44°E, 19.3 ft. dist., mkd. "T30N R29W S19 BT".

A fir, 12 ins. diam., bears S78°W, 16.5 ft. dist., mkd. "T30N R30W S24 BT".

Painted bearing trees and attached Land Survey Monument and Bearing Tree signs.

Magnetic Declination: 20° East



SKETCH OF CORNER

CERTIFICATION	
I. Mark Federman	certify the information shown herein is true and correct.
I. Steven A. Boyer	certify that this Corner Record correctly represents work performed by me or under my direction in compliance with the "Corner Recordation Act" (70-22-101, et seq., M.C.A.)
Date: 6/02/98	Signature of Surveyor & Seal
Reg. No.: 9750LS	
Employer: U.S. FOREST SERVICE	

Office of Clerk and Recorder, County of Lincoln. This "corner record" was filed for record on 8-19-98 and was noted on the cross-index plat and is assigned page No. 10164 in book No. _____.

County Official

Sec. 19			

• - corner this sheet