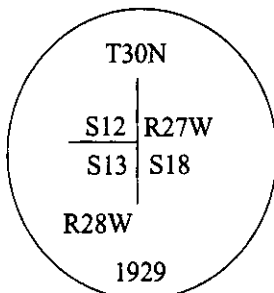


# CERTIFIED CORNER RECORDATION

Corner Sec. Cor. Sec. 12 & 13 T. 30N R. 28W P.M., MT Lincoln County

I. 1893 G.L.O. Original Record by James S. Keerl et. al.: Set a limestone, 14x10x8 ins., 10 ins. in the ground, for cor to secs. 7,12,13&18, mkd. with 4 notches on S. and 2 notches on the N. edges. Established four bearing trees.

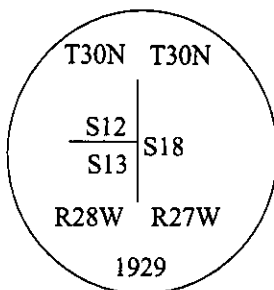
1929 G.L.O. Resurvey of the W. Boundary of T30N, R27W by Ray D. Armstrong: For the newly established corner position of secs. 12 & 13, set an iron post, 3 ft. long, 2 ins. in diam., 28 ins. in the ground, with the brass cap mkd. as shown:



Established two bearing trees:

A lodgepole pine, 8 ins. diam., bears S34°30'W, 33 lks. dist., mkd. "T30N R28W S13 BT".  
A lodgepole pine, 8 ins. diam., bears N21°30'W, 25 lks. dist., mkd. "T30N R28W S12 BT".

II. Found a 2 in. diam. iron pipe, protruding 8 ins. above ground, firmly set, with a 2 1/2 in. diam. brass cap, mkd. as shown:



\*Cap mkd. different than record.

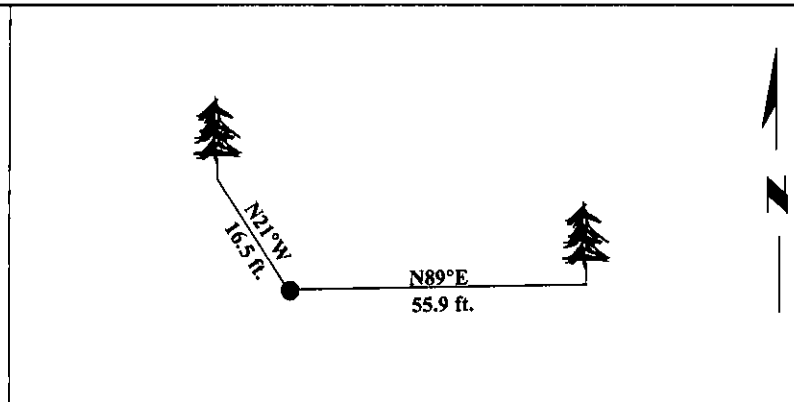
From which:

A lodgepole pine, 11 ins. diam., bears N21°W, 16.5 ft. dist., mkd. with visible scribe. (GLO-record)  
The section 13 bearing tree is gone due to powerline R/W.

III. Established one new bearing tree.  
A larch, 6 ins. diam., bears N89°E, 55.9 ft. dist., mkd., "X BT".  
No trees available in sec. 13 appropriate for bearing trees.

Painted bearing trees and attached Land Survey Monument and Bearing Tree signs.

Magnetic Declination: 20° East.



SKETCH OF CORNER

CERTIFICATION

I, Mark Federman certify the information shown herein is true and correct.

Mark Federman

I, Ronald A. Pearson certify that this Corner Record correctly represents work performed by me or under my direction in compliance with the "Corner Recordation Act" (70-22-101, et seq., M.C.A.)

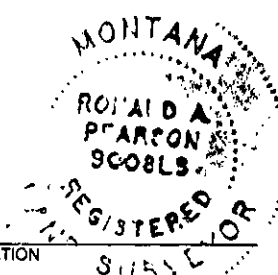
Ronald A. Pearson

Signature of Surveyor & Seal

Date: 12/30/96

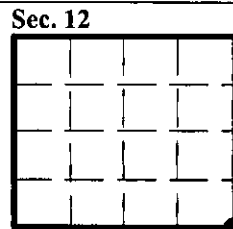
Reg. No.: 9008LS

Employer: U.S. FOREST SERVICE



Office of Clerk and Recorder, County of LINCOLN. This "corner record" was filed for record on FEB 3, 1997 and was noted on the cross-index plat and is assigned page No. 9091, in book No. \_\_\_\_\_.

CORAL M. CUMMINGS  
County Official



• - corner this sheet

Cross Index No. J-25 T. 30N R. 28W P.M., MT