

CERTIFIED CORNER RECORDATION

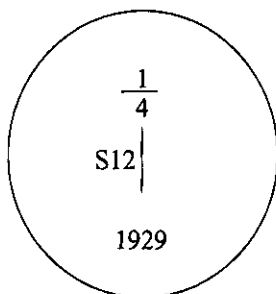
Corner 1/4 Sec. 12 T. 30N R. 28W P.M., MT Lincoln County

- I. 1893 G.L.O. Original Record by James S. Keerl et. al.: Set a limestone, 18x14x5 ins., 12 ins. in the ground, for 1/4 sec. cor. of secs. 7 & 12, mkd. "1/4" on the W. face.

from which:

- A pine, 6 ins. diam., bears S45°E, 3 lks. dist., mkd., "1/4 S BT".
A pine, 5 ins. diam., bears N70°W, 16 lks. dist., mkd., "1/4 S BT".

1929 G.L.O. Resurvey of W. Boundary of T30N, R27W by Ray D. Armstrong: For the newly established 1/4 sec. cor. for sec. 12 only, set an iron post, 3 ft. long, 1 in. in diam., 28 ins. in the ground, with the brass cap mkd as shown:



from which:

- A lodgepole pine, 7 ins. diam., bears S50°30'W, 20 lks. dist., mkd., "1/4 S12 BT".
A lodgepole pine, 6 ins. diam., bears N44°W, 22 lks. dist., mkd., "1/4 S12 BT".

- II. Found a 1 in. diam. iron rod, protruding 9 ins. above ground, firmly set, with a 2 1/2 in. diam. brass cap mkd. as shown above.

from which:

- A lodgepole pine snag, 6 ins. diam., bears S50°W, 13.2 ft. (20 lks) dist., mkd. with visible scribe.
No evidence found of the N44°W bearing tree.

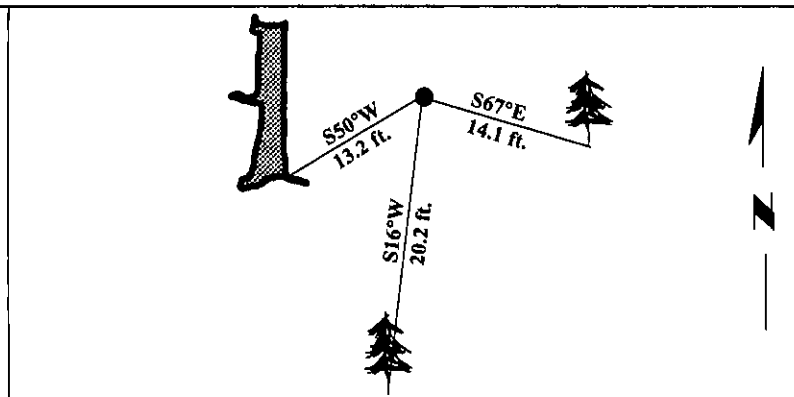
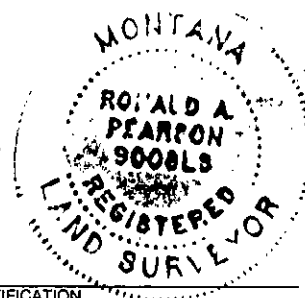
- III. Established two new bearing trees:

- A larch, 4 ins. diam., bears S67°E, 14.1 ft. dist., mkd. "X BT".
A fir, 8 ins. diam., bears S16°W, 20.2 ft. dist., mkd. "1/4 S12 BT".

Only one suitable bearing tree available in section 12.

Painted bearing trees and attached Land Survey Monument and Bearing Tree signs.

Magnetic Declination: 20° East.



SKETCH OF CORNER

CERTIFICATION

I, Mark Federman
certify the information shown herein is true and correct.

Mark Federman

I, Ronald A. Pearson
certify that this Corner Record correctly represents work performed by me or under my direction in compliance with the "Corner Recordation Act" (70-22-101, et seq., M.C.A.)

Ronald A. Pearson
Signature of Surveyor & Seal

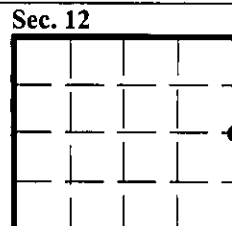
Date: 12/30/96

Reg. No.: 9008LS

Employer: U.S. FOREST SERVICE

Office of Clerk and Recorder, County of LINCOLN. This "corner record" was filed for record on FEB 3, 1997 and was noted on the cross-index plat and is assigned page No. 9083 in book No. CORAL M. CUMMINGS By [Signature]

County Official



• - corner this sheet