

INSTRUCTIONS

1. Original and/or subsequent record used to evaluate the corner position.
2. Description of evidence found, note discrepancies in the record, state method of establishing lost or obliterated corners.
3. Description of monument and accessories set to perpetuate the corner position.
4. Sketch of corner, show all pertinent data which can best be shown in a sketch example, corner marking, topography ties, position of accessories, etc.
5. Certification must be signed and sealed by Land Surveyor registered in the State of Montana.
6. Fill in Cross Index & Section Diagram at bottom of sheet.

CERTIFIED CORNER RECORDATION

Corner 13 HES 825 T. 30 N. R. 28 W. P.M.M. Lincoln County

I. 1919 HES 825 record by W. P Stephenson: Place a small stone marked with a cross (X) under a limestone, 26x12x4 ins., 16 ins. in the ground, marked 13 HES 825 on the W face, and a cross (X) on top for the exact corner point, from which:

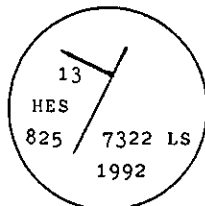
- A cross (X) on a pine tree, 9 ins. diam., bears N 62° 23' E, 11 lks. dist.
- A cross (X) on a fir tree, 6 ins. diam., bears S 44° 30' E, 17 lks. dist., each blazed and scribed 13 HES 825 BT.

Raise a mound of stone 4 ft. base, 2 ft. high, West of the corner.

II. No stone found. The position of the corner falls in the south edge of Dunn Cr. Rd. and was destroyed during road construction. I determined the position of the corner by distance- distance intersection from cor. 5 HES 825 and a found bearing tree for cor. 13 HES 825.

A pine, 19 ins. diam., bears N 60° W, 7.3 ft. (11 lks.) dist. (GLO) The scribed face was not visible and is belived to be covered by the road fill.

III. At the position determined for the corner, I set a 3/4 in. diam. X 30 ins. long driveable aluminum rod, 4 ins. below the surface of the road, with a 3 1/4 in. diam. aluminum cap mkd. as shown.



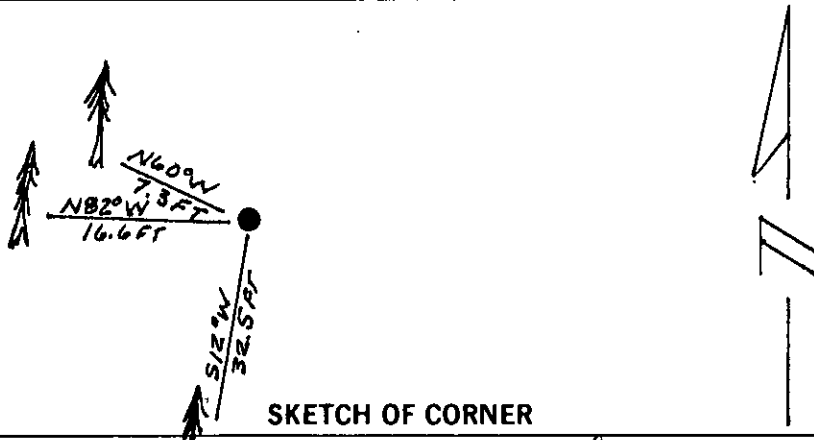
from which:

- A fir, 8 ins. diam., bears S 12° W, 32.5 ft. dist., mkd. 13 HES 825 BT.
- A pine, 9 ins. diam., bears N 82° W, 16.6 ft. dist., mkd. 13 HES 825 BT.

Painted red bands around the bearing trees and attached Land Survey Monument and Bearing Tree signs.

Set a 6 ft. galvanized steel guard post with Land Survey Marker and Property Boundary decals, S 34° W, 3 ft.

Magnetic declination: 20° East



SKETCH OF CORNER

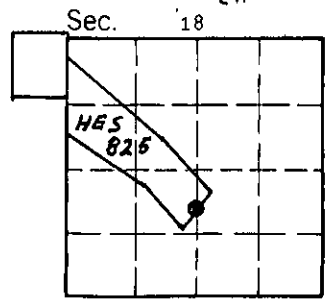
CERTIFICATION

I, Kenneth R. Kern
 certify the information shown herein is true and correct.
Kenneth R. Kern
 Signature Ground Party Chief

I, Alvah F. Hughes
 certify that this Corner Record correctly represents work performed by me or under my direction in compliance with the "Corner Recordation Act" (70-22-101, et seq., M.C.A.)
Alvah F. Hughes
 Signature of Surveyor & Seal 7322 LS
 U.S. FOREST SERVICE

Date: 12/1/92 Reg. No. 7322 LS
 Employer: U.S. FOREST SERVICE

Office of Clerk and Recorder, County of Lincoln. This "corner record" was filed for record on Jan 19, 1993 was noted on the cross-index plat and is assigned page No. 5296, in book No. _____
Coral M. Cummings
 County Official



Cross Index No. 13 HES 825 T. 30 N. R. 28 W. P.M.M.

• - corner this sheet