

INSTRUCTIONS

1. Original and/or subsequent record used to evaluate the corner position.
2. Description of evidence found, note discrepancies in the record, state method of establishing lost or obliterated corners.
3. Description of monument and accessories set to perpetuate the corner position.
4. Sketch of corner, show all pertinent data which can best be shown in a sketch example, corner marking, topography ties, position of accessories, etc.
5. Certification must be signed and sealed by Land Surveyor registered in the State of Montana.
6. Fill in Cross Index & Section Diagram at bottom of sheet.

CERTIFIED CORNER RECORDATION

Corner 14 HES 825 T. 30 N. R. 28 W. P.M.M. Lincoln County

- I. 1919 HES 825 record by W. P. Stephenson: A quartzite stone in place, 6x36x24 ins. above ground, marked 14 HES 825 on the N face, and a cross (X) on top for the exact corner point, from which:

A cross (X) on a pine tree, 5 ins. diam., bears N $39^{\circ}03'W$, 84 lks. dist.

A cross (X) on a pine tree, 36 ins. diam., bears S $58^{\circ}24'E$, 28 lks. dist., each blazed and scribed 14 HES 825 BT.

Raise a mound of stone 4 ft. base, 2 ft. high, North of the corner.

1982 Corner Recordation by M. D. Lauteren: Found 36 in. pine BT, scribing visible, found stone. I make one new BT:

A larch, 8 ins. diam., bears S $47^{\circ}W$, 11.23 ft. dist. to CL.

- II. Found a stone, 6x36x24 ins., firmly set in place, mkd. 14 HES 825 and a cross (X) on top.

A pine, 17 ins. diam., bears N $39^{\circ}E$, 54.4 ft. (82 lks.) dist., mkd. with a snow blaze and a healed face. (GLO Record: 84 lks.)

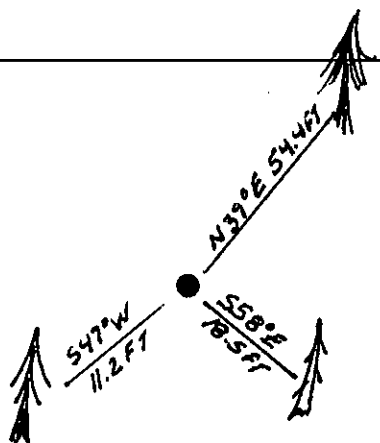
A dead pine, 37 ins. diam., bears S $58^{\circ}E$, 18.5 ft. (28 lks.) dist., mkd. 14 HES 825 BT. (GLO)

A larch, 10 ins. diam., bears S $47^{\circ}W$, 11.2 ft. (17 lks.) dist., mkd. with a healed face. (MDL)

- III. Painted red bands around the bearing trees and attached Land Survey Monument and Bearing Tree signs.

Set a 6 ft. galvanized steel guard post with Land Survey Marker and Property Boundary decals, N $34^{\circ}E$, 3 ft.

Magnetic declination: 20° East



SKETCH OF CORNER

CERTIFICATION

Kenneth R. Kern

I, Kenneth R. Kern, certify the information shown herein is true and correct.

Kenneth R. Kern
Signature Ground Party Chief

Alvah F. Hughes

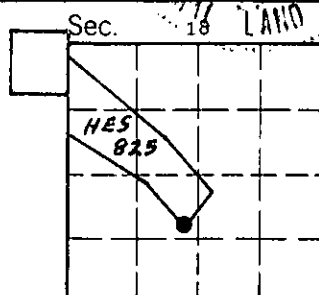
I, Alvah F. Hughes, certify that this Corner Record correctly represents work performed by me or under my direction in compliance with the "Corner Recordation Act" (70-22-101, et seq., M.C.A.).

Alvah F. Hughes
Signature of Surveyor & Seal

Date: 11/30/92 Reg. No. 7322 FS

Employer: U.S. FOREST SERVICE

Office of Clerk and Recorder, County of Lincoln. This "corner record" was filed for record on Jan 19, 1993 was noted on the cross-index plat and is assigned page No. 5295, in book No. Coral M. Cunningham County Official



Cross Index No. 14 HES 825 T. 30 N. R. 28 W. PMM

• - corner this sheet