

INSTRUCTIONS

1. Original and/or subsequent record used to evaluate the corner position.
2. Description of evidence found, note discrepancies in the record, state method of establishing lost or obliterated corners.
3. Description of monument and accessories set to perpetuate the corner position.
4. Sketch of corner, show all pertinent data which can best be shown in a sketch example, corner marking, topography ties, position of accessories, etc.
5. Certification must be signed and sealed by Land Surveyor registered in the State of Montana.
6. Fill in Cross Index & Section Diagram at bottom of sheet.

CERTIFIED CORNER RECORDATION

Corner 15 HES 825 T. 30 N. R. 28 W. P.M.M. Lincoln County

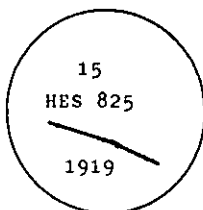
- I. 1919 HES 825 record by W. P. Stephenson: Place a small stone marked with a cross (X) under an iron post, 2 ins. diam., 36 ins. long, 24 ins. in the ground, with a brass cap mkd. 1919 15 HES 825, and a point on top for the exact corner point, from which:

A cross (X) on a tamarack tree, 9 ins. diam., bears $S 76^{\circ} 51' E$, 8 lks. dist.

A cross (X) on a fir tree, 6 ins. diam., bears $N 38^{\circ} 56' E$, 26 lks. dist., each blazed and scribed 15 HES 825 BT.

Raise a mound of stone 4 ft. base, 2 ft. high, NE of the corner.

- II. Found a 2 in. diam. iron pipe, 10 ins. above ground, firmly set in a collar of stone, with a 2 1/2 in. diam. brass cap mkd. as shown



from which:

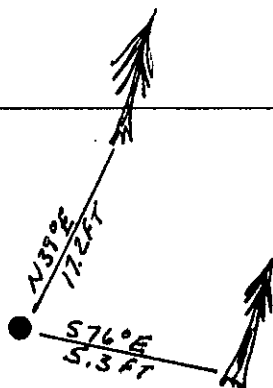
A larch, 22 ins. diam., bears $S 76^{\circ} E$, 5.3 ft. (8 lks.) dist., mkd. with a healed face. (GLO)

A fir, 21 ins. diam., bears $N 39^{\circ} E$, 17.2 ft. (26 lks.) dist., mkd. with a healed face. (GLO)

- III. Painted red bands around the bearing trees and attached Land Survey Monument and Bearing Tree signs.

Set a 6 ft. galvanized steel guard post with Land Survey Marker and Property Boundary decals, $N 58^{\circ} W$, 3 ft.

Magnetic declination: 20° East



SKETCH OF CORNER

CERTIFICATION

1. Kenneth R. Kern

certify the information shown herein is true and correct.

Kenneth R. Kern
Signature Ground Party Chief

1. Alvah F. Hughes

certify that this Corner Record correctly represents work performed by me or under my direction in compliance with the "Corner Recordation Act" (70-22-101, et seq., M.C.A.)

Alvah F. Hughes
Signature of Surveyor & Seal

Date: 12/1/92 Reg. No. 732276-2

Employer: U.S. FOREST SERVICE

Office of Clerk and Recorder, County of Lincoln. This "corner record" was filed for record on Jan 19, 1993 was noted on the cross-index plat and is assigned page No. 5293, in book No. Coral M. Cumming By PB

County Official

Cross Index No. 15 HES 825 T. 30 N R. 28 W PMM

• - corner this sheet