

INSTRUCTIONS

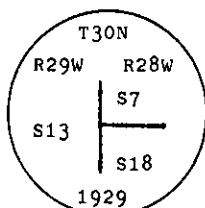
1. Original and/or subsequent record used to evaluate the corner position.
2. Description of evidence found, note discrepancies in the record, state method of establishing lost or obliterated corners.
3. Description of monument and accessories set to perpetuate the corner position.
4. Sketch of corner, show all pertinent data which can best be shown in a sketch example, corner marking, topography ties, position of accessories, etc.
5. Certification must be signed and sealed by Land Surveyor registered in the State of Montana.
6. Fill in Cross Index & Section Diagram at bottom of sheet.

CERTIFIED CORNER RECORDATION

Corner NW Sec. Cor. S18 T. 30 N. R. 28 W. P.M.M. Lincoln County

- I. 1898 GLO Record by Paul S. A. Bickel: Set a granite stone, 20x10x6 ins., 17 ins. in the ground, and four bearing trees.

1929 Retracement and Resurvey of part of the W. boundary of T30N R28W by A. T. Harris & P. L. Inch: Set an iron post, 3 ft. long, 2 ins. diam., 28 ins. in the ground for the corner of secs. 7 & 18, with brass cap mkd.:



From which

- A pine, 34 ins. diam., bears N $79^{\circ}45'E$, 45 lks. dist., mkd T30N R28W S7 BT.
A pine, 25 ins. diam., bears S $27^{\circ}00'E$, 79 lks. dist., mkd T30N R28W S18 BT.

1972 BLM Remonumentation by J. E. French: The cor. of secs. 7 & 18, on the W. bdy. of the Tp., monumented with a GLO iron post, 2 ins. diam., projecting 8 ins. above the ground, with brass cap properly mkd., from which the remains of one of the original bearing trees:

- A pine stump, 36 ins. diam., bears N $79^{\circ}45'E$, 45 lks. dist., mkd. T30N R28W S7 BT.

Add the marks 1972 to the brass cap.

From which the new beaing trees;

- A fir, 8 ins. diam., bears N $12\frac{1}{2}^{\circ}E$, 54 lks. dist., mkd. T30N R28W S7 BT.
A fir, 6 ins. diam., bears S $34^{\circ}E$, 19 lks. dist., mkd. T30N R28W S18 BT.

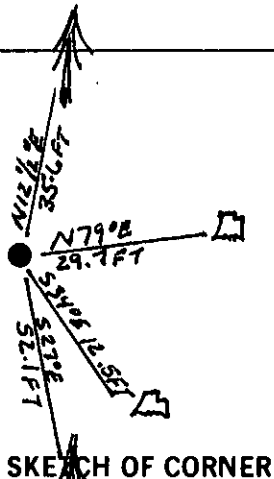
Raise a flat mound of stone, 3 ft. base, around the iron post.

- II. Found a 2 1/2 in. diam. iron pipe, 10 ins. above ground, firmly set in a rock collar, with a 3 1/4 in. diam. brass cap mkd. as shown in the above 1929 GLO record, from which:

- A burnt pine stump, bears N $79^{\circ}E$, 29.7 ft. (45 lks.) dist., no visible marks. (GLO)
A fir, 12 ins. diam., bears N $12\frac{1}{2}^{\circ}E$, 35.6 ft. (54 lks.) dist., mkd. with a healed face. (BLM)
A burnt pine stump, bears S $27^{\circ}E$, 52.1 ft. (79 lks.) dist., no visible marks. (GLO)
A pine, 8 ins. diam., bears S $34^{\circ}E$, 12.5 ft. (19 lks.) dist., mkd. with a healed face. (BLM)

- III. Painted red bands around the bearing trees and attached Land Survey Monument and Bearing Tree signs.
Set a 6 ft. galvanized steel guard post with Land Survey Marker and Property Boundary decals, South, 3 ft.

Magnetic declination: 20° East



SKETCH OF CORNER

CERTIFICATION

Kenneth R. Kern

I, Kenneth R. Kern
certify the information shown herein is true and correct.

Signature Ground Party Chief

Alvah F. Hughes

I, Alvah F. Hughes
certify that this Corner Record correctly represents work performed by me or under my direction in compliance with the "Corner Recordation Act" (70-22-101, et seq., M.C.A.)

Signature of Surveyor & Seal

Date: 11/30/92 Reg. No. 7322

Employer: U.S. FOREST SERVICE

Office of Clerk and Recorder, County of Lincoln. This "corner record" was filed for record on Jan 19, 1923 was noted on the cross-index plat and is assigned page No. 5284, in book No. Coral M. Cummings by AB

County Official

Sec.		18	19

Cross Index No. J-01 T. 30 N. R. 28 W. P.M.M.

• corner this sheet