

## INSTRUCTIONS

1. Original and/or subsequent record used to evaluate the corner position.
2. Description of evidence found, note discrepancies in the record, state method of establishing lost or obliterated corners.
3. Description of monument and accessories set to perpetuate the corner position.
4. Sketch of corner, show all pertinent data which can best be shown in a sketch example, corner marking, topography ties, etc.
5. Certification must be signed and sealed by Land Surveyor registered in the State of Montana.
6. Fill in Cross Index & Section Diagram at bottom of sheet.

## CERTIFIED CORNER RECORDATION

Corner 3 HES 825 T. 30 N. R. 28 W. P.M.M. Lincoln County

- I. 1919 HES 825 record by W. P Stephenson: Place a small stone marked with a cross (X) under a quartzite stone 24x12x6 ins., 14 ins. in the ground, marked 3 HES 825 on the SW face, and a cross (X) on top for the exact corner point, from which:

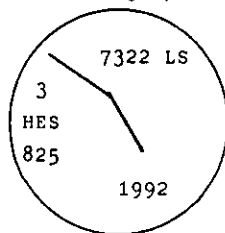
A cross (X) on a tamarack tree, 20 ins. diam., bears S 12° 50' W, 42 lks. dist.

A cross (X) on a fir tree, 14 ins. diam., bears N 56° 27' W, 37 lks. dist., each blazed and scribed 3 HES 825 BT.

Raise a mound of stone 4 ft. base, 2 ft. high, SW of the corner.

- II. Found a down tree, 14 ins. diam., mkd. 3 HES 825 BT, assumed to be an original bearing tree but unable to determine the original position of the tree. Used record bearings and distances for both of the original bearing trees to attempt to recover the corner stone from the position of the found tree. No stone was found, possibly due to past logging activity in the area.

- III. At the position of the corner, determined by Grant Boundary Adjustment, I set a 2 1/2 in. diam. X 30 ins. long aluminum pipe, 25 ins. in the ground, with a 3 1/4 in. diam. aluminum cap mkd. as shown:



Established two new bearing trees:

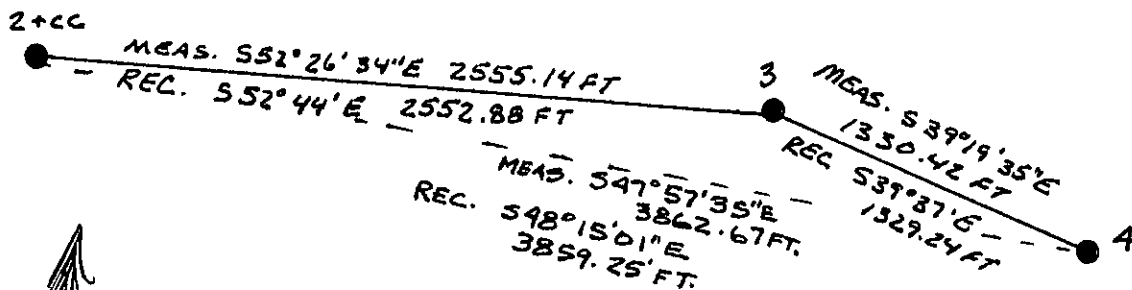
A fir, 7 ins. diam., bears S 58° W, 7.9 ft. dist., mkd. 3 HES 825 BT.

A pine, 8 ins. diam., bears N 44° W, 26.2 ft. dist., mkd. 3 HES 825 BT.

Painted red bands around the bearing trees and attached Land Survey Monument and Bearing Tree signs.

Set a 6 ft. galvanized steel guard post with Land Survey Marker and Property Boundary decals, N 54° W, 3 ft.

Magnetic declination: 20° East



SKETCH OF CORNER

## CERTIFICATION

I, Kenneth R. Kern  
certify the information shown herein is true and correct.

Kenneth R. Kern  
Signature Ground Party Chief

I, Alvah F. Hughes  
certify that this Corner Record correctly represents work performed by me or under my direction in compliance with the "Corner Recordation Act" (70-22-101, et seq., M.C.A.)

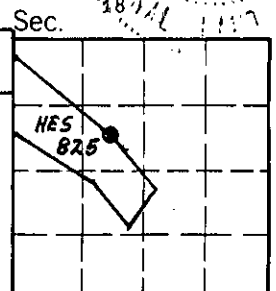
Alvah F. Hughes  
Signature of Surveyor & Seal

Date: 12/3/92 Reg. No. 7322 LS  
U.S. FOREST SERVICE

Employer: \_\_\_\_\_

Office of Clerk and Recorder, County of Lincoln. This "corner record" was filed for record on Jan 19, 1993 was noted on the cross-index plat and is assigned page No. 5283, in book No. \_\_\_\_\_

Cross Index No. 3 HES 825 T. 30 N R. 28W PMM



• - corner this sheet