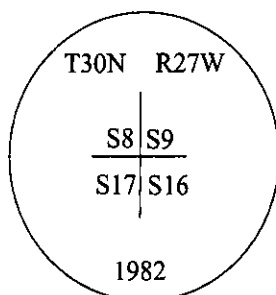


# CERTIFIED CORNER RECORDATION

Corner Sec. Cor. Sec. 8,9,16 & 17 T. 30N R. 27W P.M., MT Lincoln County

I. 1893 G.L.O. Original Record by James S. Keerl et. al.: Set a sandstone, 18x8x6 ins., 12 ins. in the ground, for cor. to secs. 8,9,16&17, mkd. with 4 notches on S. and E. edges. Established four bearing trees.

1982 Certified Corner Recordation by William W. Weikel Reg. No. 4731S: No original evidence found. Set by proportionate methods, a standard 30 in. USFS aluminum monument, 24 ins. in the ground, stamped as shown:



from which:

- A pine, 6 ins. diam., bears N16°E, 29.8 ft. dist., mkd. "S 9 B T".
- A pine, 5 ins. diam., bears S30°E, 19.6 ft. dist., mkd. "S 16 B T".
- A pine, 5 ins. diam., bears S79°W, 27.2 ft. dist., mkd. "S 17 B T".
- A pine, 6 ins. diam., bears N7°W, 19.1 ft. dist., mkd. "S 8 B T".

II. Found a 2 1/2 in. diam. aluminum post, protruding 2 ins. above the ground, firmly set, with a 3 1/4 in. diam. aluminum cap mkd. as shown above.

from which:

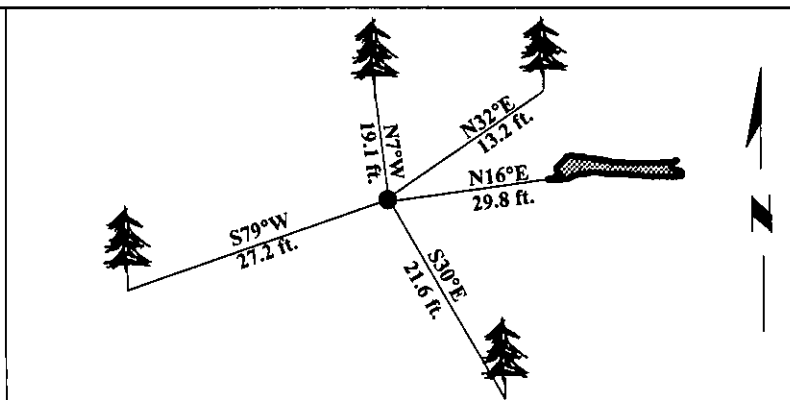
- A down tree, 6 ins. diam., indeterminate exact bearing/dist., mkd. "S9 BT visible". (record N16°E, 29.8 ft.)
- A pine, 7 ins. diam., bears S30°E, 21.6 ft. (rec. 19.6) ft. dist., mkd. with visible scribe.
- A pine, 8 ins. diam., bears S79°W, 27.2 ft. dist., mkd. with visible scribe.
- A pine, 8 ins. diam., bears N7°W, 19.1 ft. dist., mkd. with visible scribe.

III. Established one new bearing tree:

- A pine, 7 ins. diam., bears N32°E, 13.2 ft. dist., mkd. "T30N R27W S9 BT".

Painted bearing trees and attached Land Survey Monument and Bearing Tree signs.

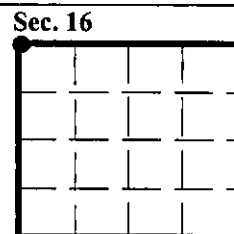
Magnetic Declination: 20° East.



SKETCH OF CORNER

CERTIFICATION	
I. <u>Mark Federman</u>	certify the information shown herein is true and correct.
I. <u>Ronald A. Pearson</u>	certify that this Corner Record correctly represents work performed by me or under my direction in compliance with the "Corner Recordation Act" (70-22-101, et seq., M.C.A.)
Signature of Surveyor & Seal	
Date: <u>12/30/96</u>	
Reg. No.: <u>9008LS</u>	
Employer: <u>U.S. FOREST SERVICE</u>	

Office of Clerk and Recorder, County of LINCOLN. This "corner record" was filed for record on FEB 3, 1997 and was noted on the cross-index plat and is assigned page No. 9093, in book No.                     . CORAL M. CUMMINGS County Official



• - corner this sheet

Cross Index No. J-9 T. 30N R. 27W P.M., MT