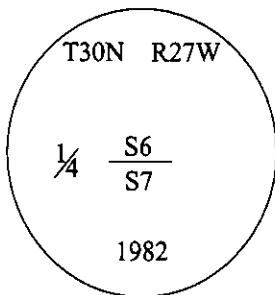


# CERTIFIED CORNER RECORDATION

Corner 1/4 Sec. 6 & 7 T. 30N R. 27W P.M., MT Lincoln County

I. 1893 G.L.O. Original Record by James S. Keerl et. al.: Set a limestone, 14x10x5 ins., 10 ins. in the ground, for 1/4 sec. cor., mkd. "1/4" on the N. face, and raised a mound of stone 1 1/2 ft. high, 2 ft. base alongside. No bearing trees available.

1982 B.L.M. Remonumentation Record by Cruz D. Almanza: The 1/4 sec. cor. of secs. 6 & 7, monumented with a limestone, 14x10x5 ins., firmly set 10 ins. in the ground, mkd. "1/4" on the N. face. At the corner point, set an aluminum post, 30 ins. long, 2 1/2 ins. diam., 22 ins. in the ground, with the aluminum cap mkd. as shown:



Established two bearing trees, bury the original stone alongside the aluminum post.

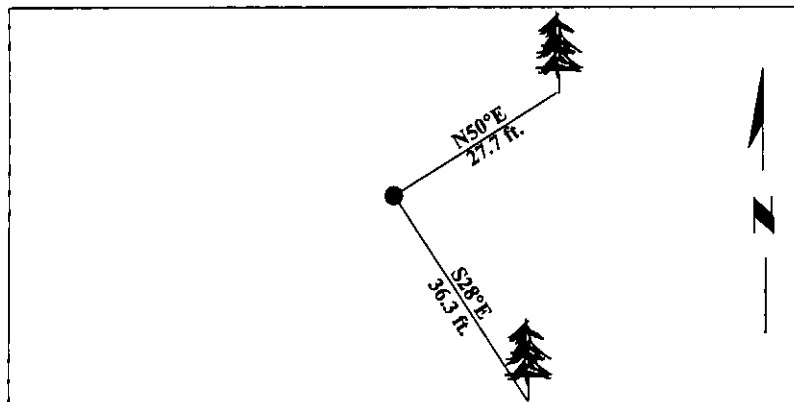
II. Found a 2 1/2 in. diam. aluminum pipe, protruding 3 ins. above the ground, firmly set, with a 3 1/4 in. diam. aluminum cap mkd. as shown above.

from which:

- A larch, 18 ins. diam., bears N50°E, 27.7 ft. dist., mkd. with a healed face. (record)
- A larch, 25 ins. diam., bears S28°E, 36.3 ft. dist., mkd. with a healed face. (record)

III. Painted bearing trees and attached Land Survey Monument and Bearing Tree signs.

Magnetic Declination: 20° East.



SKETCH OF CORNER

**CERTIFICATION**

I, Mark Federman  
certify the information shown herein is true and correct.

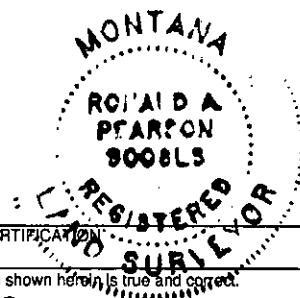
Ronald A. Pearson  
certify that this Corner Record correctly represents work performed by me or under my direction in compliance with the "Corner Recordation Act" (70-22-101, et seq., M.C.A.)

Ronald A. Pearson  
Signature of Surveyor & Seal

Date: 12/30/96

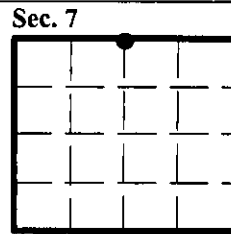
Reg. No.: 9008LS

Employer: U.S. FOREST SERVICE



Office of Clerk and Recorder, County of LINCOLN. This "corner record" was filed for record on FEB 3, 1997 and was noted on the cross-index plat and is assigned page No. 9087, in book No. \_\_\_\_\_.

CORAL M. CUMMINGS  
County Official



● - corner this sheet

Cross Index No. E-03 T. 30N R. 27W P.M., MT