

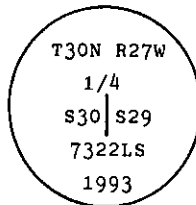
INSTRUCTIONS

1. Original and/or subsequent record used to evaluate the corner position.
2. Description of evidence found, note discrepancies in the record, state method of establishing lost or obliterated corners.
3. Description of monument and accessories set to perpetuate the corner position.
4. Sketch of corner, show all pertinent data which can best be shown in a sketch example, corner marking, topography ties, position of accessories, etc.
5. Certification must be signed and sealed by Land Surveyor registered in the State of Montana.
6. Fill in Cross Index & Section Diagram at bottom of sheet.

CERTIFIED CORNER RECORDATION

Corner W 1/4 of Sec. 29 T. 30 N. R. 27 W. P.M.M. Lincoln County

- I. 1893 G.L.O. original record by A. L. JAQUETH et al: Set a sandstone, 20x10x6 ins., 15 ins. in the ground, for 1/4 Sec. Cor. mkd. 1/4 on N. face, and raised a mound of stone 1 1/2 ft high, 2 ft. base alongside.
- No bearing trees established.
- II. No corner monument found due to recent logging activity.
- III. At the position determined by single proportion, set a 2 1/2 in. diam., 30 in. long aluminum pipe, 24 ins. in the ground, with a 3 1/4 in. U.S.D.A. Forest Service aluminum cap marked as shown:



Established 2 new bearing trees.

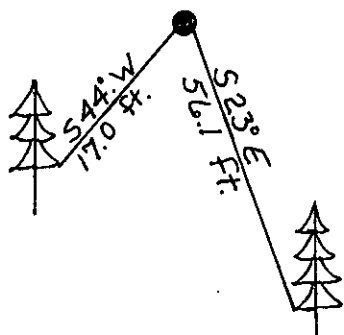
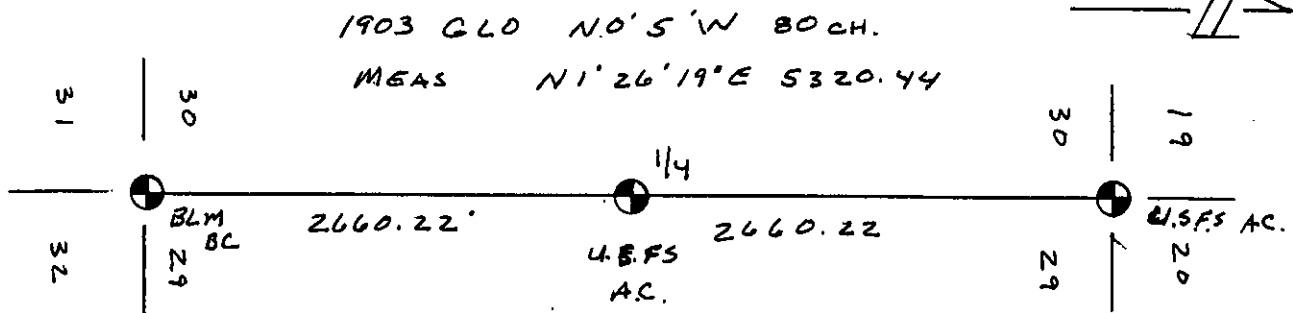
A larch, 19 ins. diam., bears S23° E, 56.1 ft. dist., mkd. 1/4 S29 BT.

A larch, 8 ins. diam., bears S44° W, 17.0 ft. dist., mkd. 1/4 S30 BT.

Painted a red band around bearing trees and attached Land Survey Monument and Bearing Tree signs.

No guard post established.

Magnetic Declination: 20° East.



SKETCH OF CORNER

CERTIFICATION

I, Mark Federman
certify the information shown herein is true and correct.

Mark Federman
Signature Ground Party Chief

Alvah F. Hughes

I, Alvah F. Hughes
certify that this Corner Record correctly represents work performed by me or under my direction in compliance with the "Corner Recordation Act" (70-22-101, et seq., M.C.A.)

Alvah F. Hughes
Signature of Surveyor & Seal

Date: 12/30/93 Reg. No. 7322LS

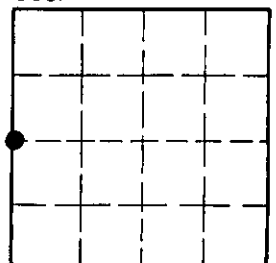
Employer: U.S. FOREST SERVICE

Office of Clerk and Recorder, County of Lincoln. This "corner record" was filed for record on Jan 18, 1994 was noted on the cross-index plat and is assigned page No. 6115, in book No. Coral M. Cummings & Co

County Official

Cross Index No. T-5 T. 30N R. 27W P.M.M.

Sec. 29



• - corner this sheet