

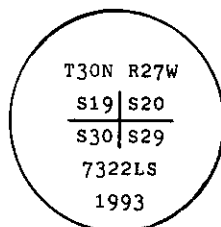
INSTRUCTIONS

1. Original and/or subsequent record used to evaluate the corner position.
2. Description of evidence found, note discrepancies in the record, state method of establishing lost or obliterated corners.
3. Description of monument and accessories set to perpetuate the corner position.
4. Sketch of corner, show all pertinent data which can best be shown in a sketch example, corner marking, topography ties, position of accessories, etc.
5. Certification must be signed and sealed by Land Surveyor registered in the State of Montana.
6. Fill in Cross Index & Section Diagram at bottom of sheet.

CERTIFIED CORNER RECORDATION

Corner S.E. of Sec. 19 T. 30 N. R. 27 W. P.M.M. Lincoln County

- I. 1893 G.L.O. original record by A. L. JAQUETH et al: Set a granite stone, 14x12x10 ins., 10 ins. in the ground, for Cor. to Secs. 19, 20, 29, & 30, marked with 2 notches on the S. and 5 notches of the E. edges. Raised a mound of stone 1 1/2 ft. high, with 2 ft. base alongside.
- No bearing trees established.
- II. Found a firmly set granite stone, 12x8 ins., 6 ins. above ground, with 2 notches of the S. and 5 notches on the E. edges.
- III. At the position of the found stone, set a 2 1/2 in. diam., 30 in. long aluminum pipe, 24 ins. in the ground, with a 3 1/4 in. U.S.D.A. Forest Service aluminum cap marked as shown:



from which:

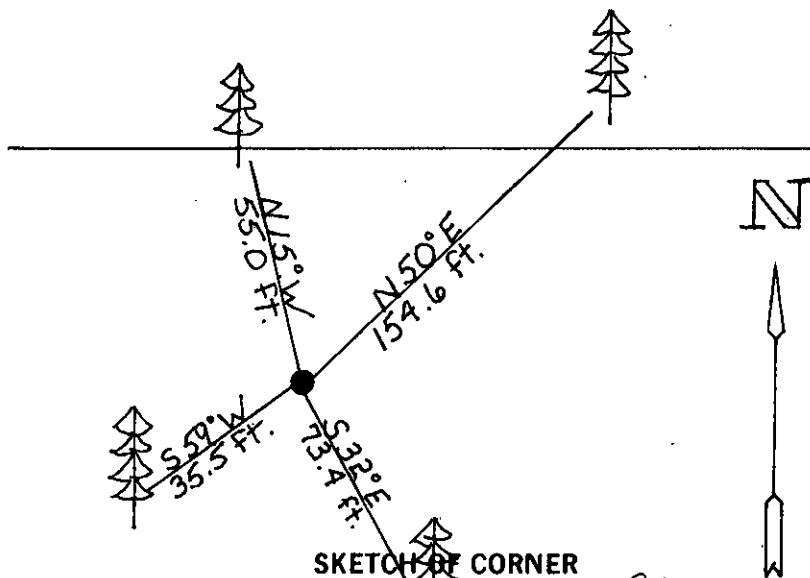
- A fir, 13 ins. diam., bears N50° E, 154.6 ft. dist., mkd. T30N R27W S20 BT.
- A larch, 18 ins. diam., bears S32° E, 73.4 ft. dist., mkd. T30N R27W S29 BT.
- A fir, 25 ins. diam., bears S59° W, 35.5 ft. dist., mkd. T30N R27W S30 BT.
- A larch, 19 ins. diam., bears N15° W, 55.0 ft. dist., mkd. T30N R27W S19 BT.

Raise a collar of stone around aluminum pipe, 2 feet in diameter.

Painted a red band around bearing trees and attached Land Survey Monument and Bearing Tree signs.

Set a 6 ft. galvanized steel guard post with Land Survey Marker and Property Boundary decals, SOUTH, 3 feet.

Magnetic Declination: 20° East.



SKETCH OF CORNER

CERTIFICATION

I, Mark Federman
certify the information shown herein is true and correct.

Mark Federman
Signature Ground Party Chief

I, Alvah F. Hughes
certify that this Corner Record correctly represents work performed by me or under my direction in compliance with the Corner Recordation Act" (70-22-101, et seq., M.C.A.)

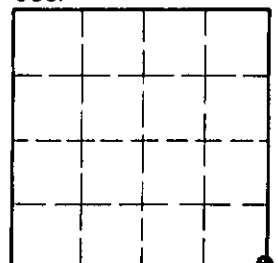
Alvah F. Hughes
Signature of Surveyor & Seal

Date: 12/30/93 Reg. No. 7322LS

Employer: U.S. FOREST SERVICE

Office of Clerk and Recorder, County of Lincoln. This "corner record" was filed for record on Jan 18, 1994 was noted on the cross-index plat and is assigned page No. 6113, in book No. Coral M. Cumming By AS County Official

Sec. 19



• corner this sheet

Cross Index No. R-5 T. 30N R. 27W P.M.M.