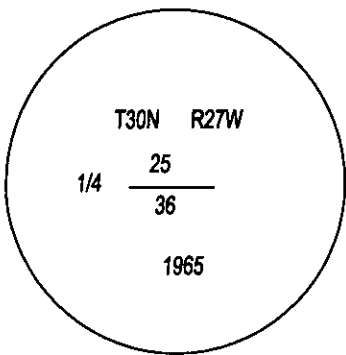
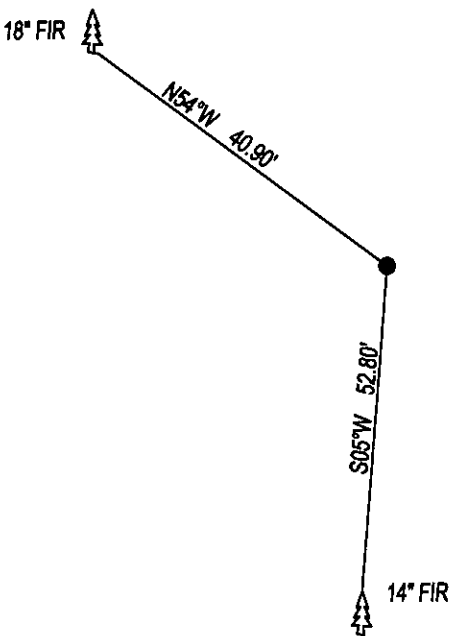


PLSS CORNER RECORDATION

CORNER E1/4 CORNER SEC. 35 T. 30N R. 27W P.M.M., LINCOLN COUNTY

FOUND: 3 1/4" B.L.M. BRASS CAP STAMPED AS SHOWN, FROM WHICH;
14" FIR BEARS S05°W, 52.80' SCRIBE OVERGROWN.
18" FIR BEARS 54°W, 40.90' SCRIBE OVERGROWN.

MAINTENANCE: REMOVED TREE LIMBS FROM CORNER AREA.
SET STEEL POST 1 FOOT EAST, PAINTED RED BANDS ON BT'S.
ALL BEARING TREES HAVE BT TAGS ATTACHED.



SKETCH OF CORNER

CERTIFICATION

I, DAN CROFT
CERTIFY THE INFORMATION SHOWN HEREIN IS TRUE AND CORRECT.

SIGNATURE GROUND PARTY CHIEF

I, MARC J. CARSTENS
CERTIFY THAT THIS CORNER RECORD CORRECTLY REPRESENTS WORK
PERFORMED BY ME OR UNDER MY DIRECTION IN COMPLIANCE WITH THE
"CORNER RECORDATION ACT" (70-22-101, ET SEQ., M.C.A.)

SIGNATURE OF SURVEYOR & SEAL

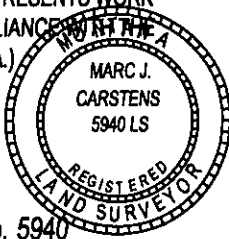
12-23-2014

DATE

CARSTENS SURVEYING

EMPLOYER

LIC. No. 5940



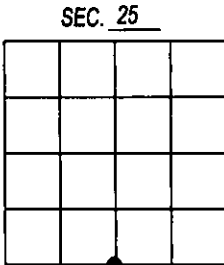
OFFICE OF CLERK AND RECORDER, COUNTY OF LINCOLN. THIS "CORNER RECORD" WAS FILED FOR RECORD ON
_____ WAS NOTED ON THE CROSS-INDEX PLAT AND IS ASSIGNED PAGE NO. _____, IN BOOK NO. _____

COUNTY OFFICIAL

CROSS INDEX NO. V-23 T. 30N

ADOPTED NOVEMBER 7, 2012, MONTANA BOARD OF PROFESSIONAL ENGINEERS & LAND SURVEYORS

255216 BOOK: CCR CC&R'S PAGE: 12181 Pages: 1
STATE OF MONTANA LINCOLN COUNTY
RECORDED: 12/24/2014 9:55 KOI: CC&R'S
TAMMY D. LAUER CLERK AND RECORDER
FEE: \$0.00 BY: Tammy D. Lauer
FOR: CARSTENS LAND SURVEYING P.O. BOX 1374, POLSON, MONTANA



● CORNER THIS SHEET