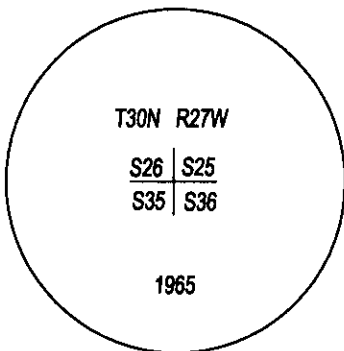
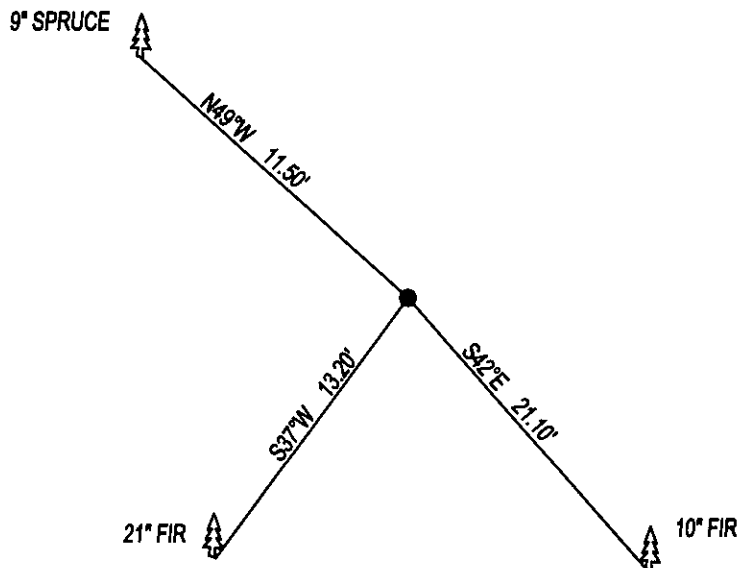


PLSS CORNER RECORDATION

CORNER NE CORNER SEC. 35 T. 30N R. 27W P.M.M., LINCOLN COUNTY

FOUND: 3 1/4" B.L.M. BRASS CAP STAMPED AS SHOWN, FROM WHICH:
10° FIR BEARS S42°E, 21.10 SCRIBE OVERGROWN.
21° FIR BEARS S37°W, 13.20 SCRIBE OVERGROWN.

MAINTENANCE: REMOVED SMALL TREES FROM CORNER AREA.
NEW BT, 9° SPRUCE BEARS N49°W 11.50' SCRIBED RM.
SET STEEL POST 1 FOOT SOUTH, PAINTED RED BANDS ON BT'S.
ALL BEARING TREES HAVE BT TAGS ATTACHED.



SKETCH OF CORNER

CERTIFICATION

I, DAN CROFT
CERTIFY THE INFORMATION SHOWN HEREIN IS TRUE AND CORRECT.

SIGNATURE GROUND PARTY CHIEF

I, MARC J. CARSTENS

CERTIFY THAT THIS CORNER RECORD CORRECTLY REPRESENTS WORK
PERFORMED BY ME OR UNDER MY DIRECTION IN COMPLIANCE WITH THE
"CORNER RECORDATION ACT" (70-22-101, ET SEQ., M.C.A.)

Marc J. Carstens 12/5/14
SIGNATURE OF SURVEYOR & SEAL

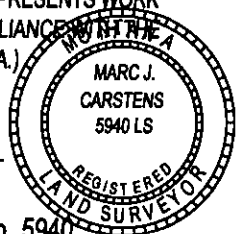
12-03-2014

DATE

CARSTENS SURVEYING

EMPLOYER

LIC. No. 5940



OFFICE OF CLERK AND RECORDER, COUNTY OF _____
WAS NOTED ON THE _____

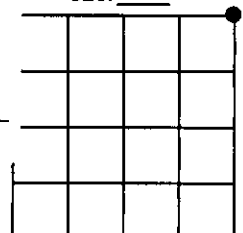
COUNTY OFFICIAL

CROSS INDEX NO. V-21 T. 30N R. 27W P.M.M.

ADOPTED NOVEMBER 7, 2012, MONTANA BOARD OF PROFESSIONAL ENGINEERS & LAND SURVEYORS

254956 BOOK: CCR CC&R'S PAGE: 12166 Pages: 1
STATE OF MONTANA LINCOLN COUNTY
RECORDED: 12/08/2014 11:40 KOI: CC&R'S
TAMMY D. LAUER CLERK AND RECORDER
FEE: \$0.00 BY: Tammy D. Lauer
FOR: CARSTENS LAND SURVEYING P.O. BOX 1374, POLSON, MONTANA

SEC. 35



● CORNER THIS SHEET