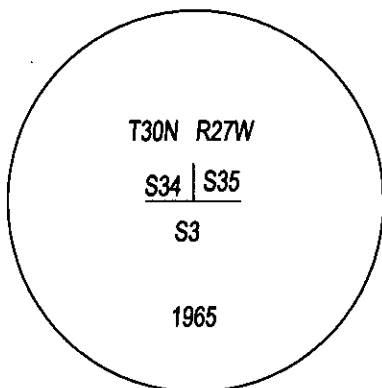
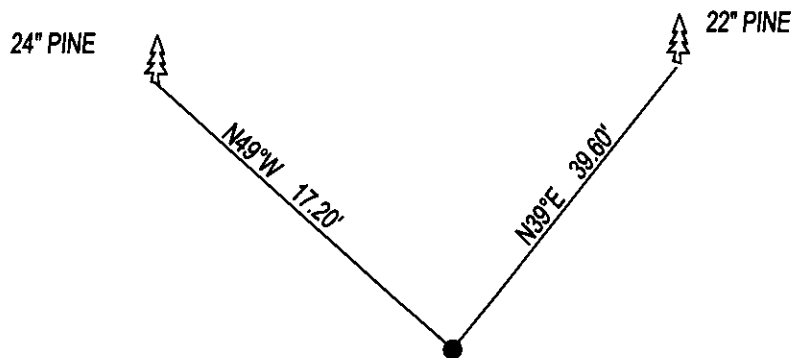


CERTIFIED CORNER RECORDATION

CORNER SW CORNER SEC. 35 T. 30N R. 27W P.M.M., LINCOLN COUNTY

FOUND: 3 1/4" B.L.M. BRASS CAP STAMPED AS SHOWN, FROM WHICH:
22" PINE BEARS N39°E, 39.60 SCRIBE OVERGROWN.
24" PINE BEARS N49°W, 17.20 SCRIBE OVERGROWN.

MAINTENANCE: REMOVED BRUSH AND TREE LIMBS FROM CORNER AREA.
SET STEEL POST 1 FOOT EAST, PAINTED RED BANDS ON BT'S.
ALL BEARING TREES HAVE BT TAGS ATTACHED.



SKETCH OF CORNER

254825 BOOK: CCR CC&R'S PAGE: 12160 Pages: 1

STATE OF MONTANA LINCOLN COUNTY

RECORDED: 11/28/2014 10:41 KOI: CC&R'S

TAMMY D. LAUER CLERK AND RECORDER

FEE: \$0.00

BY: *Robin A. Benson, Deputy*

FOR: FILED

COUNTY OFFICIAL

CROSS INDEX NO. Z-17 T. 30N R. 27W P.M.M.

ADOPTED JULY 1, 1981, MONTANA BOARD OF PROFESSIONAL ENGINEERS & LAND SURVEYORS

CERTIFICATION

I, DAN CROFT

CERTIFY THE INFORMATION SHOWN HEREIN IS TRUE AND CORRECT.

SIGNATURE GROUND PARTY CHIEF

I, MARC J. CARSTENS

CERTIFY THAT THIS CORNER RECORD CORRECTLY REPRESENTS WORK PERFORMED BY ME OR UNDER MY DIRECTION IN COMPLIANCE WITH THE "CORNER RECORDATION ACT" (70-22-101, ET SEQ., M.C.A.)

[Signature]
SIGNATURE OF SURVEYOR & SEAL

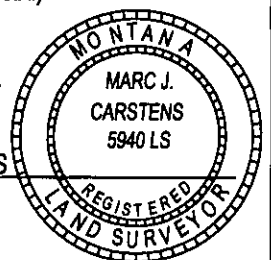
11-26-2014

DATE

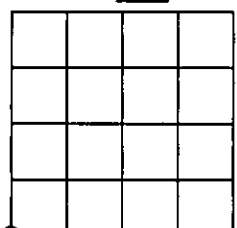
CARSTENS SURVEYING

EMPLOYER

5940LS
REG. NO.



SEC. 35



● CORNER THIS SHEET