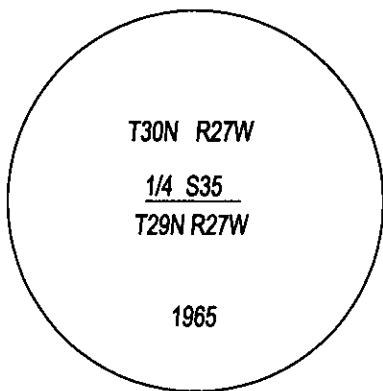
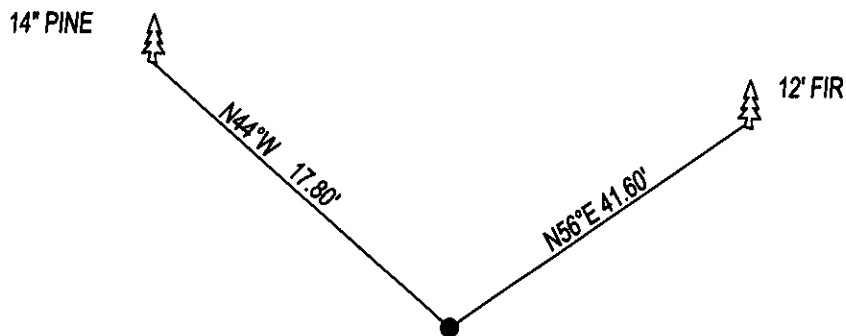


CERTIFIED CORNER RECORDATION

CORNER S1/4 CORNER SEC. 35 T. 30N _____, R. 27W _____, P.M.M., LINCOLN COUNTY

FOUND: 3 1/4" B.L.M. BRASS CAP STAMPED AS SHOWN, FROM WHICH;
12" FIR BEARS N56°E, 41.60 SCRIBE OVERGROWN.
14" PINE BEARS N44°W, 17.80 SCRIBE OVERGROWN.

MAINTENANCE: REMOVED BRUSH AND TREE LIMBS FROM CORNER AREA.
SET STEEL POST 1 FOOT WEST, PAINTED RED BANDS ON BT'S.
ALL BEARING TREES HAVE BT TAGS ATTACHED.



SKETCH OF CORNER

CERTIFICATION

I, DAN CROFT

CERTIFY THE INFORMATION SHOWN HEREIN IS TRUE AND CORRECT.

SIGNATURE GROUND PARTY CHIEF

I, MARC J. CARSTENS

CERTIFY THAT THIS CORNER RECORD CORRECTLY REPRESENTS WORK
PERFORMED BY ME OR UNDER MY DIRECTION IN COMPLIANCE WITH THE
"CORNER RECORDATION ACT" (70-22-101, ET SEQ., M.C.A.)


SIGNATURE OF SURVEYOR & SEAL

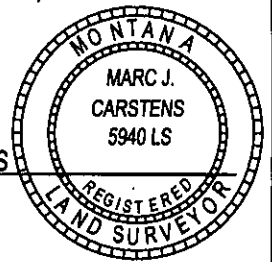
11-26-2014

DATE

CARSTENS SURVEYING

EMPLOYER

5940LS
REG. NO.



254824 BOOK: CCR CC&R'S PAGE: 12159 Pages: 1

STATE OF MONTANA LINCOLN COUNTY

RECORDED: 11/28/2014 10:37 KOI: CC&R'S

TAMMY D. LAUER CLERK AND RECORDER

FEE: \$0.00

BY: Karen A. Benson, Deputy

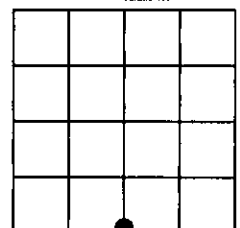
FOR: FILED

COUNTY OFFICIAL

CROSS INDEX NO. Z-19 T. 30N, R. 27W, P.M.M.

ADOPTED JULY 1, 1981, MONTANA BOARD OF PROFESSIONAL ENGINEERS & LAND SURVEYORS

SEC. 35



● CORNER THIS SHEET