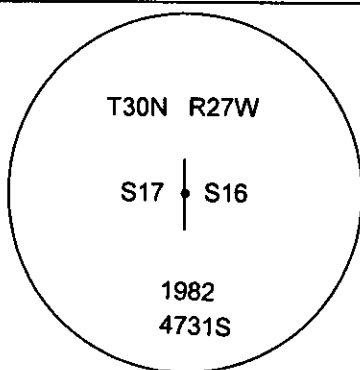
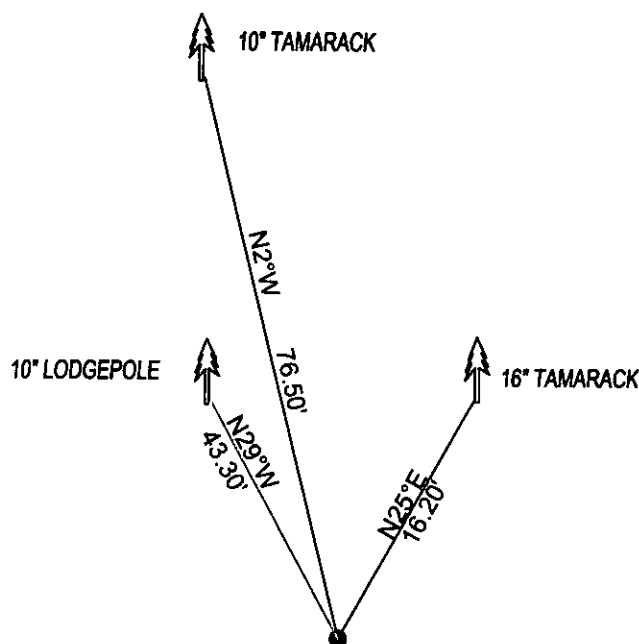


CERTIFIED CORNER RECORDATION

Corner E1/4 SEC. 17 T. 30N R. 27W P.M.M. County LINCOLN

FOUND: 3 1/4" BRASS CAP STAMPED AS SHOWN, FROM WHICH:
 16" TAMARACK BEARS N25°E 16.20' SCRIBE OVERGROWN.
 10" TAMARACK BEARS N02°W 76.50' SCRIBE OVERGROWN.
 10" TAMARACK BEARS N02°W 76.50' SCRIBE OVERGROWN.

MAINTENANCE: REMOVED BRUSH FROM CORNER AREA. SET 5 FOOT STEEL POST ALONGSIDE OF CORNER
 ATTACHED BT TAGS AND PAINTED A RED 6" BAND AND SCRIBE RED



SKETCH OF CORNER

CERTIFICATION

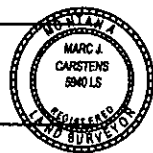
I, DAN CROFT
 certify the information shown herein is true and correct.

Signature Ground Party Chief

I, MARC J. CARSTENS
 certify that this Corner Record correctly represents work performed by me or under my direction in compliance with the "Corner Recordation Act" (70-22-101, et seq., M.C.A.)

Signature of Surveyor & Seal

Date: 10-2012 Reg. No. 5940 LS
 Employer: CARSTENS LAND SURVEYING



Office of Clerk and Recorder, County of LINCOLN . This "corner

record" was filed for record on 241259 BOOK: CCR CC&R'S PAGE: 11988 Pages: 1

STATE OF MONTANA LINCOLN COUNTY
 was noted on the cross-index p RECORDED: 10/12/2012 11:40 KOI: CC&R'S

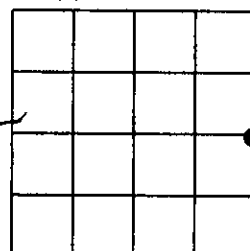
book No. TAMMY D. LAUER CLERK AND RECORDER

FEE: \$0.00 BY: Debbie K. Lauer
 FOR: CARSTENS LAND SURVEYING P.O. BOX 1374, POLSON, MONTANA

Cross Index No. L-9 T. 30N R. 27W PMM

Adopted July 1, 1981, Montana Board of Professional Engineers & Land Surveyors

Sec. 17



• corner this sheet