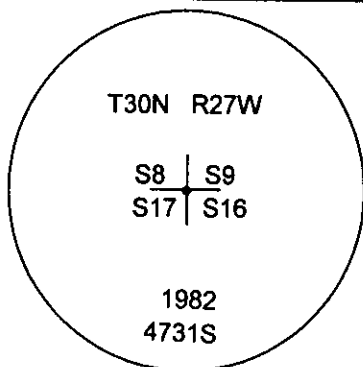
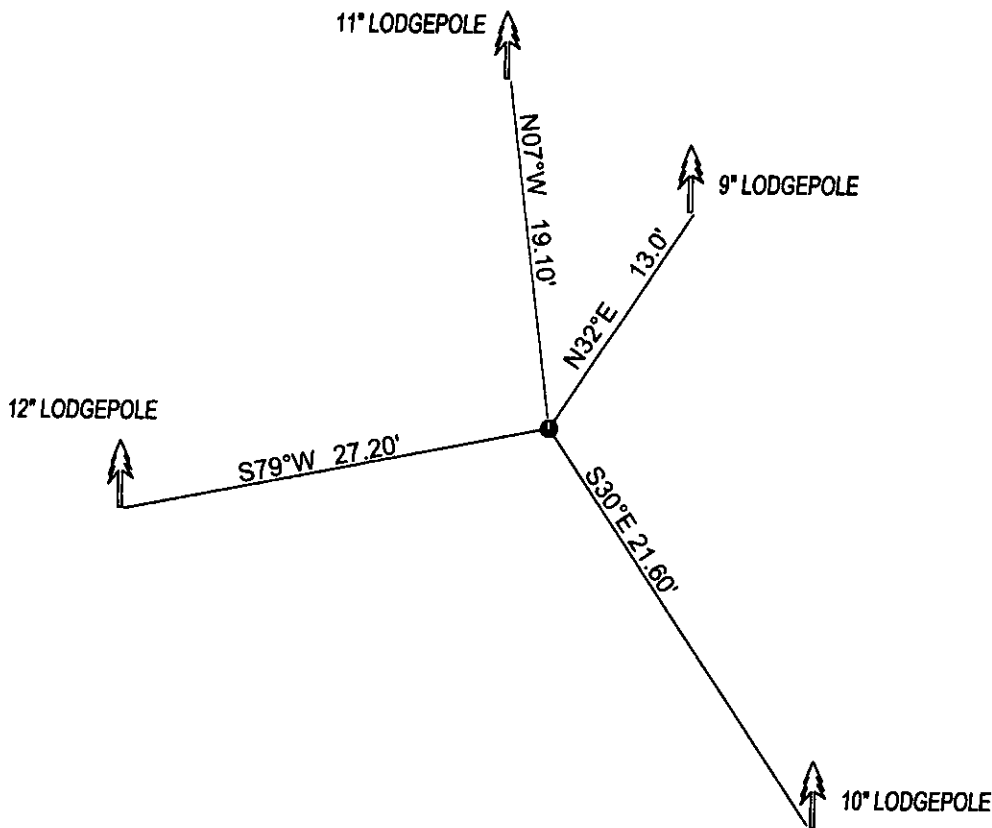


CERTIFIED CORNER RECORDATION

Corner NE CORNER SEC.17 T. 30N R. 27W P.M.M. County LINCOLN

FOUND: 3 1/4" ALUM CAP STAMPED AS SHOWN, FROM WHICH:
9" LODGEPOLE BEARS N32°E 13.0' WITH SCRIBE.
10" LODGEPOLE BEARS S30°E 21.60' WITH SCRIBE.
12" LODGEPOLE BEARS S79°W 27.2' WITH OVERGROWN SCRIBE.
11" LODGEPOLE BEARS N7°W 19.10' WITH SCRIBE.

MAINTENANCE: REMOVED BRUSH FROM CORNER AREA. SET 5 FOOT STEEL POST NORTH OF CORNER
ATTACHED BT TAGS AND PAINTED A RED 6" BAND AND SCRIBE RED



SKETCH OF CORNER

CERTIFICATION

DAN CROFT

I, DAN CROFT certify the information shown herein is true and correct.

Signature Ground Party Chief

MARC J. CARSTENS

I, MARC J. CARSTENS certify that this Corner Record correctly represents work performed by me or under my direction in compliance with the "Corner Recordation Act" (70-22-101, et seq., M.C.A.)

Signature of Surveyor & Seal



Date: 10-2012 Reg. No. 5940 LS

Employer: CARSTENS LAND SURVEYING

Office of Clerk and Recorder, County of LINCOLN . This "corner

record" was filed for record on 241258 BOOK: CCR CC&R'S PAGE: 11987 Pages: 1

STATE OF MONTANA LINCOLN COUNTY
was noted on the cross-index plat & RECORDED: 10/12/2012 11:35 KOI: CC&R'S

book No. TAMMY D. LAUER CLERK AND RECORDER

FEE: \$0.00

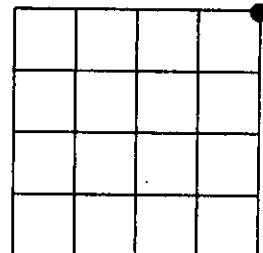
BY: [Signature]

FOR: CARSTENS LAND SURVEYING P.O. BOX 1374, POLSON, MONTANA

Cross Index No. J-9 T. 30N R. 27W PMM

Adopted July 1, 1981, Montana Board of Professional Engineers & Land Surveyors

Sec. 17



• corner this sheet