

# CERTIFIED CORNER RECORDATION

Corner SE COR. S33 T 30 N. R. 27 W. P.M.M. Lincoln County

I. Record: 1902 original GLO survey by J. Keerl and A. Jaqueth: Set a post 4 ft. long, 24 ins. in the ground, from which:

- A black pine, 12 ins. diam., bears N. 66° E., 28 lks. dist. (18.48 ft.) mkd. T30N R27W S34 BT.
- A tamarack, 12 ins. diam., bears S. 50° E., 39 lks. dist. (25.74 ft.) mkd. T29N R27W S3 BT.
- A black pine, 6 ins. diam., bears S. 54° W., 32 lks. dist. (21.12 ft.) mkd. T29N R27W S4 BT.
- A black pine, 8 ins. diam., bears N. 15° W., 9 lks. dist. (5.94 ft.) mkd. T30N R27W S33 BT.

1968 Certified Corner Rec. Bk. 1 Page 97 by N. Berg 1963-S : Set a 1 1/2 ins. diam. Gl pipe 28 ins. long, with brass cap from the remains of the original bearing trees from which :

- A larch, 16 ins. diam., bears S. 50° E., 25.74 ft. dist. with overgrown face.(original)
- A fir stump, bears S. 54° W., 21.12 ft. dist. with log with visible scribing.(original)
- A fir, 6 ins. diam., bears N. 36°30' E., 52 lks. dist. (34.32 ft.) mkd. FSRM.(new)
- A fir, 6 ins. diam., bears N. 84° W., 46 lks. dist. (30.36 ft.) mkd. FSRM.(new)

II. Found: A 1 1/2 ins. diam. iron pipe with brass cap marked as shown below, 8 ins. below ground level in fill slope.

III. Perpetuation: Establish two bearing trees described below :

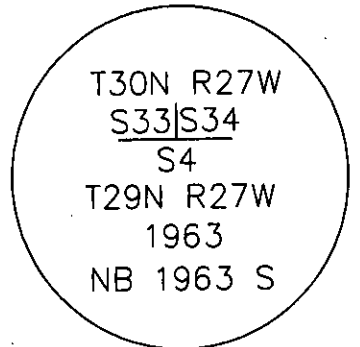
- A pine, 8 ins. diam., bears N. 67° E., 54.98 ft. dist., mkd. T30N R27W S34 BT.
- A larch, 6 ins. diam., bears N. 9° W., 51.10 ft. dist., mkd. T30N R27W S33 BT.

Painted faces and 6 in. wide red bands to all bearing trees and attached Land Survey Monument and Bearing Tree signs.

Set a steel post on line 3 ft. West of found monument.

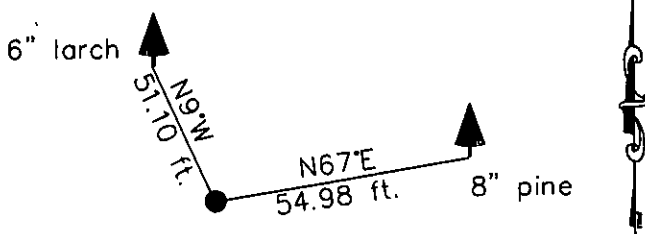
Magnetic declination: 18° East

Equipment used: Hand compass and loggers tape



Kootenai Surveyors Inc., 314 California Av., Libby, MT. 59923 (406) 293-4354

### Cross Wolf- PCTC



SKETCH OF CORNER

### CERTIFICATION

I, Kelly Rooney  
 certify the information shown herein is true and correct.  
*Kelly Rooney*  
 Signature Ground Party Chief

I, Alvah F. Hughes  
 certify that this Corner Record correctly represents work performed by me or under my direction in compliance with the "Corner Recordation Act" (70-72-101, et. seq., M.C.A.)  
*Alvah F. Hughes*  
 Signature of Surveyor & Recorder  
 Date: 11/9/2006 Reg. No. 7322-LS  
 Employer: Kootenai Surveyors Inc.

Office of Clerk and Recorder, County of Lincoln. This "corner

record" was filed for record on 200855 BOOK: CCR CC&R'S PAGE: 11056 Pages: 1

was noted on the cross-index STATE OF MONTANA LINCOLN COUNTY

book No. \_\_\_\_\_ RECORDED: 02/07/2007 9:14 KOI: CC&R'S

TAMMY D. LAUER CLERK AND RECORDER

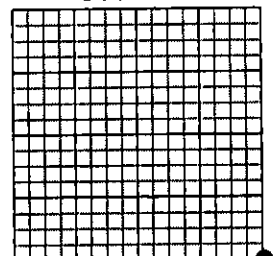
FEE: \$0.00

BY: *Tammy Lauer*

TO: FILED

Cross Index No. Z 13 T. 30N R. 27W P.M., MT

Sec. 33



• corner this sheet

Adopted July 1, 1981, Montana Board of Professional Engineers & Land Surveyors