

CERTIFIED CORNER RECORDATION

Corner SW Cor. S33 T 30 N. R. 27 W. P.M.M. Lincoln County

I. Record: 1893 original GLO survey by J. Keerl and A. Jaqueth: Set a sandstone stone, 22x12x4 ins. 17 ins. the ground, marked with 4 notches on E and 2 notches on W. edge from which:

- A fir, 6 ins. diam., bears N. 30° E., 32 lks. dist., (21.12 ft.) mkd. T30N R27W S33 BT.
- A fir, 6 ins. diam., bears S. 50° E., 14 lks. dist., (9.24 ft.) mkd. T29N R27W S4 BT.
- A fir, 6 ins. diam., bears S. 48° W., 24 lks. dist., (15.84 ft.) mkd. T29N R27W S5 BT.
- A fir, 6 ins. diam., bears N. 31° W., 46 lks. dist., (30.36 ft.) mkd. T30N R27W S32 BT.

1966 BLM Remonumentation by R. Leedy: Set an iron post, 30 ins. long, 2 1/2 ins. diam., 26 ins. in the ground with brass cap from which:

- A larch, 10 ins. diam., bears N. 32° E., 43 lks dist. (28.38 ft.) mkd. with overgrown blaze. (Record: N. 30° E., 32 lks.)
- A larch, 8 ins. diam., bears N. 25° W., 45 lks. dist. (29.70 ft.) no visible marks. (Record: N. 31° W., 46 lks.)

II. Found: A 2 1/2 ins. diam. iron pipe with a 3 1/4 ins. diam. BLM brass cap marked as shown below from which:

- A larch snag, 14 ins. diam., bears N. 32° E. 28.38 ft. dist., with overgrown blaze.
- A larch, 10 ins. diam., bears N. 25° E., 29.70 ft. dist., no visible scribing.

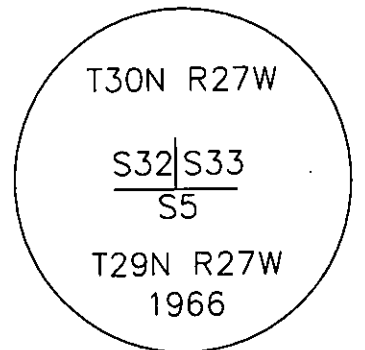
III. Perpetuation: Establish two new bearing trees described below:

- A larch, 9 ins. diam., bears N. 32° E., 7.75 ft. dist., scribed T30N R27W S33 BT.
- A fir, 14 ins. diam., bears S. 14° E., 14.31 ft. dist., scribed T29N R27W S5 BT.

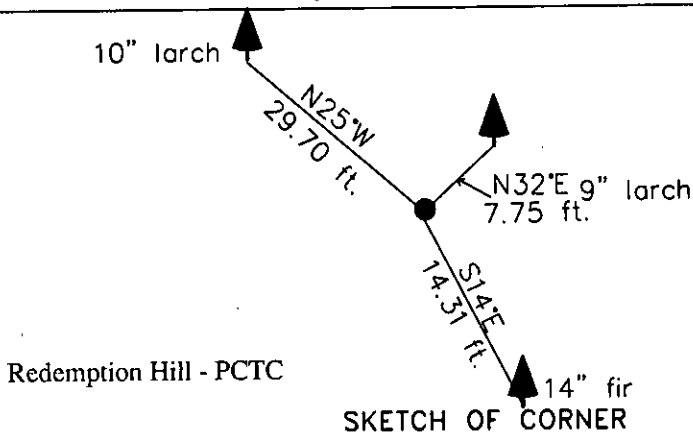
Painted faces and 6 in. wide red bands to all bearing trees and attached Land Survey Monument and Bearing Tree signs.

Magnetic declination: 18° East

Equipment used: Hand compass and loggers tape



Kootenai Surveyors Inc., 314 California Av., Libby, MT. 59923 (406) 293-4354



CERTIFICATION

I, Kelly Rooney
certify the information shown herein is true and correct.
Kelly Rooney
Signature Ground Party Chief

I, Alvah F. Hughes
certify that this Corner Record correctly represents work performed by me or under my direction in compliance with the "Corner Recordation Act" (70-22-101, et seq., M.C.A.)
Alvah F. Hughes
Signature of Surveyor & Seal

Date: 12/1/2006 Reg. No. 7322-LS

Employer: Kootenai Surveyors Inc.

Office of Clerk and Recorder, County of Lincoln This "corner

record" was filed for record on 200830 BOOK: CCR CC&R'S PAGE: 11031 Pages: 1
was noted on the cross-index STATE OF MONTANA LINCOLN COUNTY
book No. RECORDED: 02/06/2007 3:29 KOI: CC&R'S
TAMMY D. LAUER CLERK AND RECORDER
FEE: \$0.00 BY: *Tammy Lauer*
TO: FILED

Cross Index No. Z 09 T. 30N R. 27W P.M., MT

Adopted July 1, 1981, Montana Board of Professional Engineers & Land Surveyors

