

# CERTIFIED CORNER RECORDATION

Corner S 1/4 S33 T 30 N. R. 27 W. P.M.M. Lincoln County

I. Record: 1893 original GLO survey by J. Keerl and A. Jaqueth: Set a post 3 ft. long, 3 ins. square, 24 ins. the ground, marked 1/4 on the N face from which:

- A fir, 6 ins. diam., bears S. 25°E., 7 lks. dist., (4.62 ft.), mkd. 1/4 S4 BT.
- A fir, 6 ins. diam., bears N. 52°W., 16 lks. dist., (10.56 ft.), mkd. 1/4 S33 BT.

1971 BLM Remonumentation by French: Set an iron post, 30 ins. long, 2 1/2 ins. diam., 24 ins. in the ground, with brass cap, from which:

- A dead fir, 6 ins. diam., bears N. 52° W., 16 lks. dist., (10.56 ft.) mkd. 1/4 S BT.
- A fir, 12 ins. diam., bears N. 35°30' E., 8 lks. dist., (5.28 ft.) mkd. 1/4 S33 BT.
- A larch, 7 ins. diam., bears S. 11°30' W., 64 lks. dist., (42.24 ft.) mkd. X BT.

II. Found: A iron pipe, 2 1/2 ins. diam., with a 3 1/4 ins. diam. BLM brass cap firmly set from which:

- A dead larch, 18 ins. diam., bears S. 12° W., 42.24 ft. dist., with visible scribing.
- A dead fir, 12 ins. diam., bears N. 35° E., 5.28 ft. dist., with visible scribing.

III. Perpetuation: Establish two bearing trees as described below:

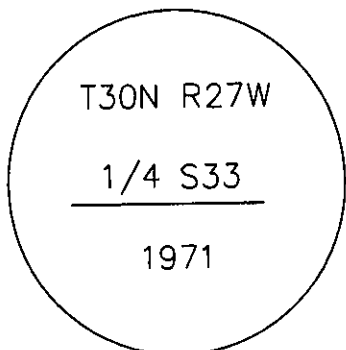
- A larch, 9 ins. diam., bears N. 43° W., 10.52 ft. dist., scribed 1/4 S33 BT.
- A larch, 7 ins. diam., bears S. 26° W., 16.40 ft. dist., scribed 1/4 S4 BT.

Pointed faces and 6 in. wide red bands to all bearing trees and attached Land Survey Monument and Bearing Tree signs.

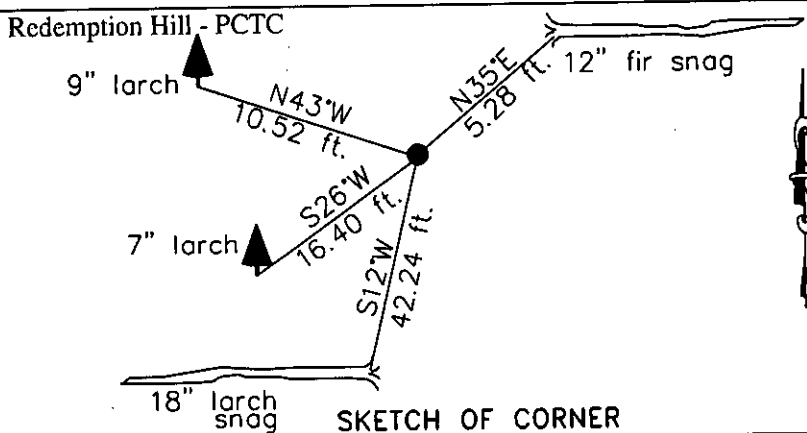
Maintain a collar of stone 1 ft. diam., 1 ft high around monument.

Magnetic declination: 18° East

Equipment used: Hand compass and loggers tape



Kootenai Surveyors Inc., 314 California Av., Libby, MT. 59923 (406) 293-4354



CERTIFICATION

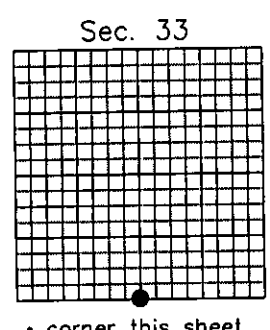
I, Kelly Rooney  
 certify the information shown herein is true and correct.  
*Kelly Rooney*  
 Signature Ground Party Chief

I, Alvah F. Hughes  
 certify that this Corner Record correctly represents work performed by me or under my direction in compliance with the "Corner Recordation Act" (70-22-101, et seq., M.C.A.)  
*Alvah F. Hughes*  
 Signature of Surveyor & Recorder

Date: 12/1/2006 Reg. No. 7322

Employer: Kootenai Surveyors Inc.

Office of Clerk and Recorder, County of Lincoln This "corner record" was filed for record 200829 BOOK: CCR CC&R'S PAGE: 11030 Pages: 1 STATE OF MONTANA LINCOLN COUNTY was noted on the cross-index RECORDED: 02/06/2007 3:28 KOI: CC&R'S book No. TAMMY D. LAUER CLERK AND RECORDER FEE: \$0.00 BY: *Tammy D. Lauer* TO: FILED



Cross Index No. Z 11 T. 30N R. 27W P.M., MT

Adopted July 1, 1981, Montana Board of Professional Engineers & Land Surveyors

\\Manon\manon-shared\CORNER REC\Cross Wolf PCTC.dwg, 1/2/2007 12:32:36 PM, Konica