

CERTIFIED LAND CORNER RECORDATION

DESCRIPTION OF CORNER EVIDENCE FOUND, AND ORIGINAL RECORD (IF KNOWN)

1893 ORIGINAL RECORD: The 1/4 Sec. cor. of Secs. 3 and 4 monumented with a limestone 15X14X6 ins., 10 ins. in the ground, mkd. with 1/4 on the W. face, and witnessed by the original bearing trees found to be in 1966 as follows:

A stump hole, bears N. 81 1/4° E., 24 lks. dist., with fallen log visible marks "S BT" {Record: N 81° 20' E., 20 lks.} (A tamarack, 18 ins. diam.)

A Stump hole, bears S. 27° W., 14 lks dist., with fallen log marks illegible. {Record: S. 25° W., 14 lks} {A tamarack, 8 ins. diam.}

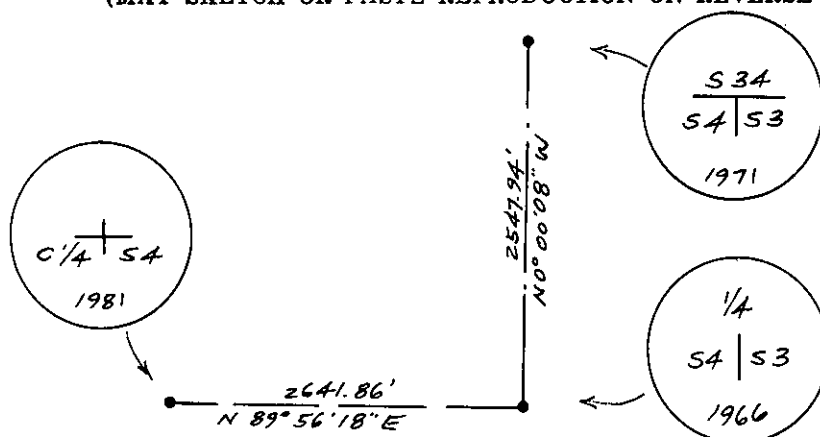
1981 Found an iron post, 30 ins. long. 2 1/2 ins. diam., 24 ins. in the ground set in 1966 with brass cap mkd. bent over badly, with original stone noted in 1966 as 20X18X6 ins. now buried alongside with several other stones, {SEE REVERSE}

DESCRIPTION OF MONUMENT AND ACCESSORIES ESTABLISHED TO PERPETUATE THE ORIGINAL LOCATION OF THIS CORNER:

Date of work: 5/6/81

Used record found evidence to reset found disturbed brass cap at record distances from found bearing trees as noted above, restoring brass cap to original location with original stone buried alongside the iron post.

SKETCH, WITH COURSE AND DISTANCE TO ADJACENT CORNERS IF DETERMINED IN THIS SURVEY. (MAY SKETCH OR PASTE REPRODUCTION ON REVERSE SIDE.)



Surveyor's Seal



I, L. A. Dolezal

certify that the information shown herein is true and correct.

L. A. Dolezal
Signature of Ground Party Chief

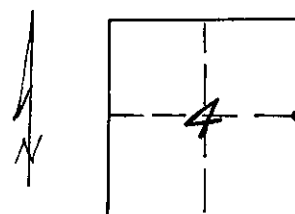
I, Melvin D. Lauteren

certify that I have carefully performed or reviewed the work done on the diagrammed corner as reported on this recordation form and approve the same.

Melvin D. Lauteren
Signature of Surveyor

DIAGRAM OF CORNER:

SECTION 4
N. T30N, R27W,
P.M.M.



• = Corner recorded on the sheet
E 1/4 SECTION 4
T30N, R27W, P.M.M.

4232-S

Registration Number

Office of Clerk and Recorder, County of *Lincoln*

This "corner record" was filed for record on the *29th* day of *May*, 19*81*, was noted on the cross-index plat and is assigned page No. *1030*, in book No. *1*

Clarence L. Taughan, by *Scott Bice*,
County Official

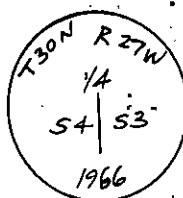
Cross Index No. *C13* T. *30* R. *27* Mer.

all being obviously disturbed as if pushed all together the West, tipping top of cap over 1 foot+ out of position to the West.

Found two bearing trees:

A Fir, 16 ins. diam., bears N.10°E., 79 lks. dist., mkd. 1/4 S3 BT.

A Fir, 12 ins. diam., bears S.85°W., 43 lks. dist., mkd. 1/4 S4 BT.



CAP MARKED
IN 1966
AND FOUND
IN 1981

