

# CERTIFIED LAND CORNER RECORDATION

## DESCRIPTION OF CORNER EVIDENCE FOUND, AND ORIGINAL RECORD (IF KNOWN)

1893 ORIGINAL RECORD: Set a Post, 3 ft. long, 3 ins. square, 24 ins. in the ground, marked 1/4 S. on N. face; from which:

A Spruce, 10 ins. diam., bears S66°45'W., 52 lks. dist., mkd. 1/4 S BT.

A Tamarack, 28 ins. diam., bears N3°E, 50 lks. dist. mkd. 1/4 S BT.

1981 Found an iron post, 30 ins. long, 2 1/2 ins. diam., 24 ins. in the ground, with brass cap mkd. (CAP ILLUSTRATED ON REVERSE SIDE)

which was set from the original bearing trees in 1966. This brass cap falls on the east bank of small stream, with rocks piled around and alongside.

SEE REVERSE

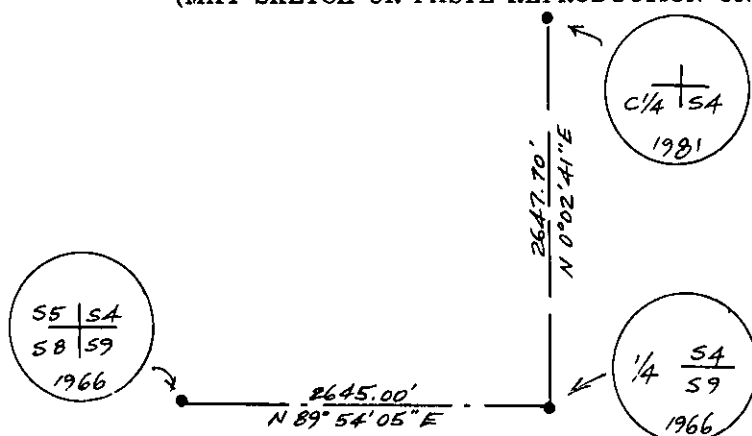
## DESCRIPTION OF MONUMENT AND ACCESSORIES ESTABLISHED TO PERPETUATE THE ORIGINAL LOCATION OF THIS CORNER:

Date of work: 5/6/81

Established a new bearing tree:

A Spruce, 12 ins. diam., bears S.50°E., 14.5 feet dist., mkd. N 1/4 S9 BT.

## SKETCH, WITH COURSE AND DISTANCE TO ADJACENT CORNERS IF DETERMINED IN THIS SURVEY. (MAY SKETCH OR PASTE REPRODUCTION ON REVERSE SIDE.)



Surveyor's Seal



I, L. A. Dolezal

certify that the information shown herein is true and correct.

Signature of Ground Party Chief

I, Melvin D. Lauteren

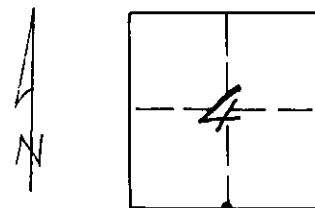
certify that I have carefully performed or reviewed the work done on the diagrammed corner as reported on this recordation form and approve the same.

Signature of Surveyor

## DIAGRAM OF CORNER:

SECTION 4

N. T30N, R27W, PMM



• = Corner recorded on the sheet SECTION 4, S 1/4 T30N, R27W, P.M.M.

4232-S

Registration Number

Office of Clerk and Recorder, County of Lincoln

This "corner record" was filed for record on the 29th day of May, 1981, was noted on the cross-index plat and is

assigned page No. 1028, in book No. 1

County Official

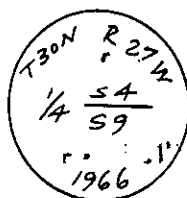
Cross Index No. E11 T. 30 R. 27 Mer.



Found Two bearing trees;

A Larch, 36 ins. diam., bears N2°E., 50 lks. dist. visible marks "BT".  
{Record N3°E., 50 lks.}

A Spruce, 36 ins. diam., blown over and sawn off uprooted stump with evidence  
of overgrown blaze, standing upright would bear S66 3/4°W., 52 lks. dist.  
{Record}



CAP STAMPED  
IN 1966

