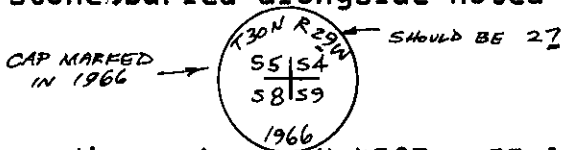


CERTIFIED LAND CORNER RECORDATION

DESCRIPTION OF CORNER EVIDENCE FOUND, AND ORIGINAL RECORD (IF KNOWN)

1893 ORIGINAL RECORD: Set a sandstone 20X10X6 ins., 15 ins. in the ground, marked with 5 notches on S. and 4 notches on E. edges, with no bearing trees noted:

1981 Found an iron post set in 1966, 30 ins. long, 2 1/2 ins. diam., 18 ins. in the ground to bedrock and in a mound of stone, 3 ft. diam., to top, with brass cap mkd. with original stone buried alongside noted as 20X12X4 Ins., found firmly set in 1966.



from which:

A Larch, 12 ins. diam., bears N.40°E., 33 lks. dist., mkd. T30N, R27W S4 BT.

A Larch, 12 ins. diam., bears S.8°E., 36 lks. dist., mkd. T30N, R27W S9 BT.

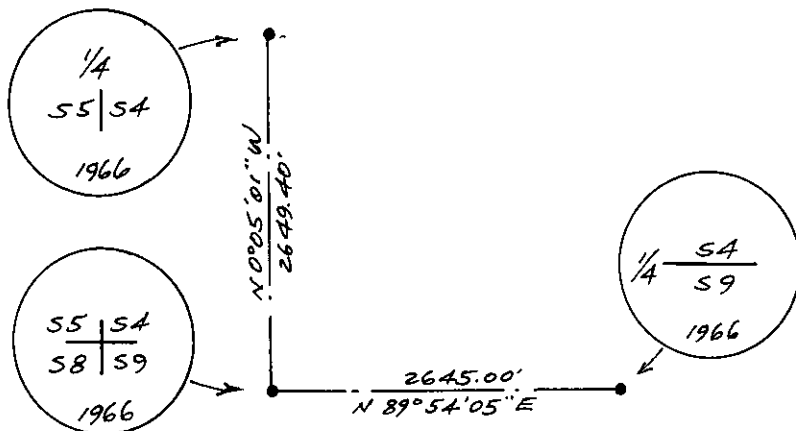
SEE REVERSE

DESCRIPTION OF MONUMENT AND ACCESSORIES ESTABLISHED TO PERPETUATE THE ORIGINAL LOCATION OF THIS CORNER:

Date of work: 5/6/81

NONE

SKETCH, WITH COURSE AND DISTANCE TO ADJACENT CORNERS IF DETERMINED IN THIS SURVEY. (MAY SKETCH OR PASTE REPRODUCTION ON REVERSE SIDE.)



Surveyor's Seal



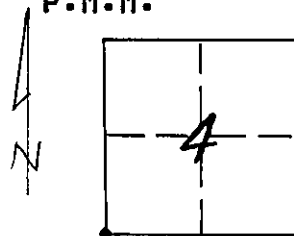
I, L.A. Dolezal certify that the information shown herein is true and correct.

L.A. Dolezal
Signature of Ground Party Chief

I, Melvin D. Lauteren certify that I have carefully performed or reviewed the work done on the diagrammed corner as reported on this recordation form and approve the same.

Melvin D. Lauteren
Signature of Surveyor

DIAGRAM OF CORNER:
SECTION 4
N. T30N, R27W,
P.M.M.



• = Corner recorded on the sheet
SW. CORNER OF
SECTION 4,
T30N, R27W, P.M.,M.

4232-S
Registration Number

Office of Clerk and Recorder, County of Lincoln

This "corner record" was filed for record on the 29th day of May, 1981, was noted on the cross-index plat and is assigned page No. 1027, in book No. 1

William L. Vaughn
County Official

Cross Index No. E9 T. 30 R. 27 Mer.

A Larch snag, 10 ins. diam., bears S.33°W., 7 lks. dist., mkd. T30N, R27W S8 BT.

A Larch, 12 ins. diam., bears N 64 1/4°W., 20 lks. dist., mkd. T30N, R27W S5 BT.

