

CERTIFIED LAND CORNER RECORDATION

DESCRIPTION OF CORNER EVIDENCE FOUND, AND ORIGINAL RECORD (IF KNOWN)

1893-ORIGINAL RECORD: Set a sandstone 20X11X10 ins., 15 ins. in the ground, for 1/4 sec. cor., marked 1/4 on W. face; from which:

A Tamarack, 12 ins. diam., bears N51°30'E., 16 lks. dist., marked 1/4 S BT.

A Tamarack, 12 ins. diam., bears S74°W., 35 lks. dist., marked 1/4 S. BT.

1966 Reported finding a Limestone, 16X10X8 ins., firmly set, mkd. with 1/4 on the W. face, witnessed by remains of original bearing trees:

A dead larch, 12 ins. diam., bears N. 51 1/2°E., 17 lks. dist., mkd. 1/4 S4 BT. {Record: N. 51 1/2°E. 16 lks.}

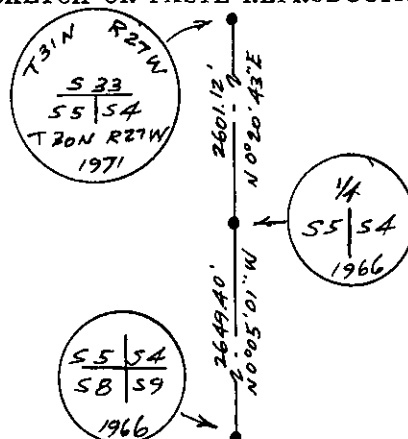
SEE REVERSE

DESCRIPTION OF MONUMENT AND ACCESSORIES ESTABLISHED TO PERPETUATE THE ORIGINAL LOCATION OF THIS CORNER:

Date of work: 5/7/81

NONE

SKETCH, WITH COURSE AND DISTANCE TO ADJACENT CORNERS IF DETERMINED IN THIS SURVEY. (MAY SKETCH OR PASTE REPRODUCTION ON REVERSE SIDE.)



Surveyor's Seal



I, L.A. Dolezal

certify that the information shown herein is true and correct.

Signature of Ground Party Chief

I, Melvin D. Lauteren

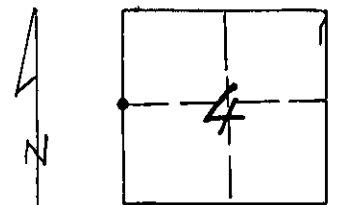
certify that I have carefully performed or reviewed the work done on the diagrammed corner as reported on this recordation form and approve the same.

Signature of Surveyor

DIAGRAM OF CORNER:

SECTION 4

N. T30N, R27W, PMM



• = Corner recorded on the sheet W 1/4 Section 4, T30N, R27W, P.M.M.

4232-S
Registration Number

Office of Clerk and Recorder, County of Lincoln

This "corner record" was filed for record on the 29th day of May, 1981, was noted on the cross-index plat and is

assigned page No. 1026, in book No. 1

County Official

Cross Index No. C-9 T. 30 R. 27 Mer.

A dead larch, 14 ins. diam., bears S. 68° W., 35 lks. dist., mkd. 1/4 S5 BT.
(Record: S74° W. 35 lks.)

Set an iron post, 30 ins. long, 2 1/2 ins. diam., 24 ins. in the ground, with brass
Cap mkd:

from which the new bearing trees:



A pine, 6 ins. diam., bears S. 37 1/2° E., 47 lks. dist., mkd. 1/4 S4 BT.

A Pine, 8 ins. diam., bears S. 79 3/4° W., 35 lks. dist., mkd. 1/4 S5 BT.

Bury the original stone alongside the iron post

1981- We found the iron post brass cap with original stone buried alongside with
both new Pine bearing trees per the 1966 record, with one dead 14" diam. Larch old,
original bearing tree standing, mkd. 1/4 S BT, posted with a location poster in
1961 bearings WSW approx. 14 feet per the poster.

