

CERTIFIED LAND CORNER RECORDATION

DESCRIPTION OF CORNER EVIDENCE FOUND, AND ORIGINAL RECORD (IF KNOWN)

1893-ORIGINAL RECORD-Set a Limestone 14X10X7 ins., 10 ins. in the ground for cor. to secs. 3, 4, 33 and 34 marked with 3 notches on E. and W. edges; from which:

A Tamarack, 7 ins. diam., bears N159E., 7 lks. dist., mkd. T31N, R27W, S34 BT.

A Tamarack, 10 ins. diam., bears S82°E., 8 lks. dist., mkd. T30N, R27W, S3 BT.

A Tamarack, 8 ins. diam., bears S9°40'W., 23 lks. dist., mkd. T30N, R27W, S4 BT.

A Tamarack, 14 ins. diam., bears N38°30'W., 28 lks. dist., mkd. T31N., R27W., S33 BT.

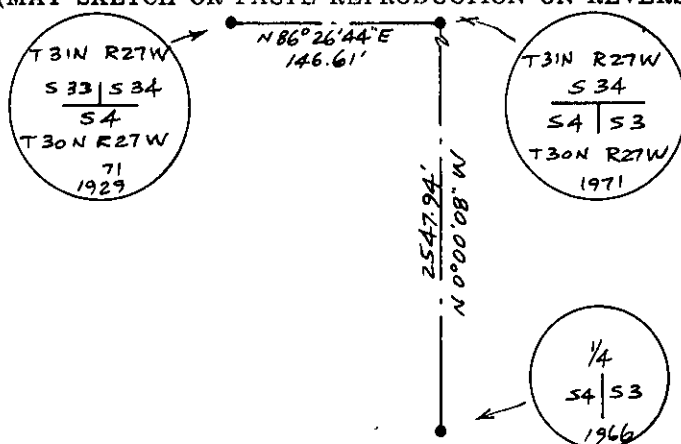
SEE REVERSE

DESCRIPTION OF MONUMENT AND ACCESSORIES ESTABLISHED TO PERPETUATE THE ORIGINAL LOCATION OF THIS CORNER:

Date of work: 5/6/81

NONE

SKETCH, WITH COURSE AND DISTANCE TO ADJACENT CORNERS IF DETERMINED IN THIS SURVEY. (MAY SKETCH OR PASTE REPRODUCTION ON REVERSE SIDE.)



Surveyor's Seal



I, L.A. Dolezal
certify that the information shown herein is true and correct.

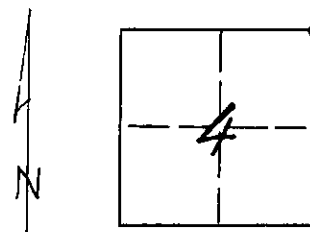
L.A. Dolezal
Signature of Ground Party Chief

I, Melvin D. Lauteren
certify that I have carefully performed or reviewed the work done on the diagrammed corner as reported on this recordation form and approve the same.

Melvin D. Lauteren
Signature of Surveyor

4232-S
Registration Number

DIAGRAM OF CORNER:
SECTION 4
N. T30N, R27W, PMM



• = Corner recorded on the sheet
NE CORNER OF
SECTION 4
T30N, R27W, P.M.M.

Office of Clerk and Recorder, County of Lincoln

This "corner record" was filed for record on the 29th day of May, 1981, was noted on the cross-index plat and is assigned page No. 1025, in book No. 1

Charles L. Taughman
County Official

Cross Index No. A-13 T. 30 R. 27 Mer.

In 1929-A Limestone 12X10X6 ins. above ground, marked and described with bearing bearing trees as noted above was changed to refer to Secs. 3 and 4 only, therefore, erased markings on NE and NW bearing trees and note that from cor:

A Tamarack 10 ins. diam., bears S.83°30'E., 9 lks. dist., instead of S82°00'E 8 lks dist.

A Tamarack 9 ins. diam., bears S.14°00'W, 23 lks. dist., instead of S.9°30'W., 23 lks dist.

In 1971-Found the cor. of Secs. 3 and 4 monumented with a limestone, 14X10X7 ins., set 10 ins. in the ground, mkd. 3 notches on the E. and W. edges, from which the original bearing trees:

A matured Larch, 15 ins. diam., bears S.83 1/2°E, 9 lks. dist., mkd. T30N, R27W, S3 BT.

A Larch, 11 ins. diam., bears S.14°W., 23 lks. dist., mkd. T30N, R27W S4 BT.

At the corner point

Set an iron post, 30 ins. long, 2 1/2 ins. diam., 24 ins. in the ground, with brass cap marked:

From which new bearing tree:

T31N R27W
S34
S41 S3
T30N R27W
1971

A Fir, 6 ins. diam., bears S.51°E., 15 lks. dist., mkd. T30N, R27W, S3 BT.

bury the original stone alongside the iron post.

1981 we found the new corner and bearing tree per 1971 and an 11 ins. diam. Tamarack bearing S14°W., 23 lks. dist., mkd. T30N, R27W, S4 BT.