

CERTIFIED CORNER RECORD

Corner 1/4 Cor. 20 | 21 T. 30 N., R. 26 W., P.M.M. Lincoln County

Record :

1893 GLO Survey by J. Keerl

"Set a limestone 16x12x6 ins., 11 ins. in the ground for 1/4 Sec. Cor. marked 1/4 on W face from which:

A Tamarack 8 ins. dia. bears N 70 1/2° W, 26 lks. dist., marked 1/4 S BT.

A Tamarack 7 ins. dia. bears S 34° E, 27 lks. dist., marked 1/4 S BT.

1982 BLM remonumentation by Almanza

"Set an alum. post, 30 ins. long, 2 1/2 ins. dia., 22 ins. in the ground, with alum. cap, from which:

A Larch snag 14 ins. dia. bears S 34° E, 27 lks. dist., marked 1/4 S BT.

A Larch 14 ins. dia. bears N 70 1/2° W, 26 lks. dist., marked 1/4 S BT.

A Bearing Tree of unknown origin:

A Fir 8 ins. dia. bears S 70° E, 42 lks. dist., marked T30N R26W S21 BT."

Found Evidence :

A 3 1/4 inch dia. alum. cap on a 2 1/2 inch dia. pipe 3 ins. above ground with a collar of stone marked as shown below from which:

A Douglas Fir 9 1/2 ins. dia. bears S 71° E, 27.10 ft. dist., with visible scribing.

A Larch 14 ins. dia. bears N 77° W, 17.00 ft. dist., with overgrown face.

A Larch snag fallen over bears S 43° E, 27 lks. dist., with visible scribing.

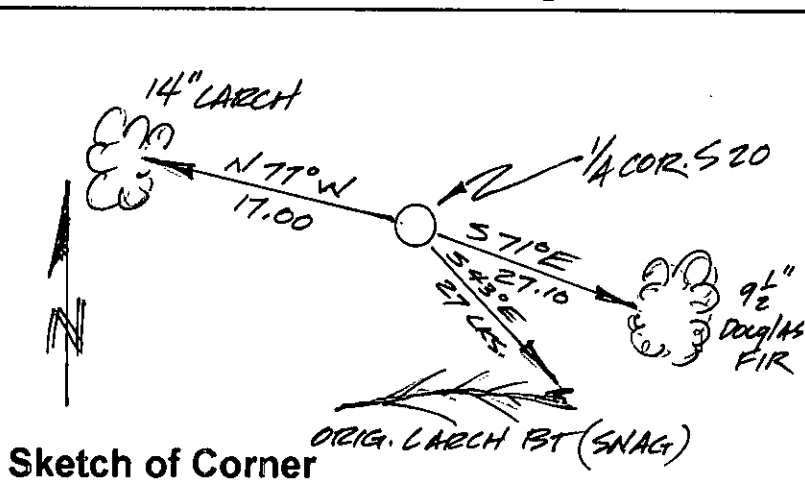
Painted scribed and overgrown faces red and 6 inch wide bands around both trees.

Attached Land Survey Monument and Bearing Tree signs to both trees.

Set a steel post on line 3 ft. S of corner with attached monument and property line stickers.



Magnetic Declination: 18° East



CERTIFICATION
I, John Damon
certify the information shown herein is true and correct
Signature of Ground Party Chief
I, Ken E. Davis
certify that this Corner Record correctly represents work performed by me or under my direction in compliance with the "Corner Recoraction Act" (70-22-101, et seq. M.C.A.)
Signature of Surveyor & Seal
Date: 10/13/97 Reg. No. 4975-S
Employer:

Office of Clerk and Recorder, County of Lincoln
This "corner record" was filed for record on Oct 14, 1997
was noted on the cross-index plat and is assigned page No. 998.7
in book No. Coal M. Cummings
County Official

