

# CERTIFIED CORNER RECORDATION

Corner 1/4 Cor.S8 T. 30 N., R. 26 W., P.M.M. Lincoln County

## Record :

1932 GLO Survey by Lyman.

"Set an iron post, 3 ft. long, 1 in. diam., 28 ins. in the ground, for the 1/4 Sec. Cor. for Sec. 8 only, with brass cap, from which:

A fir, 14 ins. diam., bears S 31 1/2° W, 18 lks. dist., marked 1/4 S8 BT.

A fir, 12 ins. diam., bears N 16 1/2° W, 24 lks. dist., marked 1/4 S8 BT."

## Found Evidence :

A 1 inch dia. iron post with a 2 1/4 inch dia. brass cap marked as shown below, from which:

A Douglas Fir, 11 1/4 ins. dia., bears N 16° W, 15.65 ft. dist., with visible scribing.

A Douglas Fir, 13 1/2 ins. dia., bears S 34° W, 12.72 ft. dist., with visible scribing.

## Perpetuation :

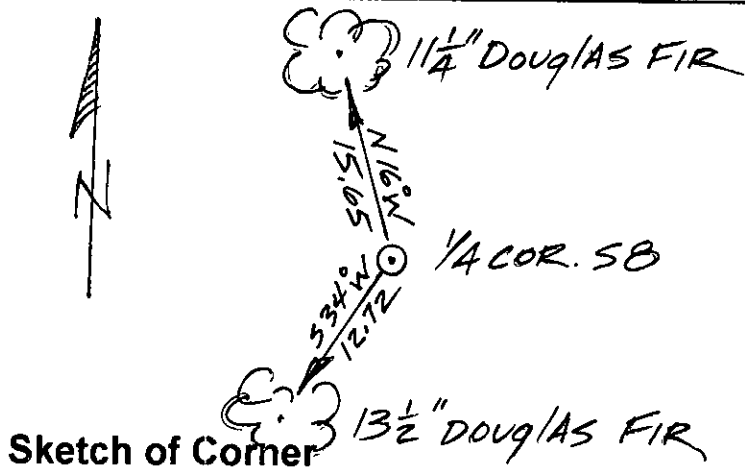
Painted scribed faces red and 6 inch wide bands around both Bearing Trees.

Attached Bearing Tree and Land Survey Monument signs to both trees.

Set a steel guard post on line 2 ft. N of corner with attached Land Survey Monument and Property Line stickers.



Magnetic Declination: 18° East



## CERTIFICATION

I, John Damon

certify the information shown herein is true and correct

John Damon  
Signature of Ground Party Chief

I, Ken E. Davis

certify that this Corner Record correctly represents work performed by me or under my direction in compliance with the "Corner Recoration Act" (70-22-101, et seq., N.C.A.)

Ken E. Davis  
Signature of Surveyor & Seal

Date: 10/13/97 Reg. No. 4975-S

Employer: \_\_\_\_\_

Office of Clerk and Recorder, County of Lincoln

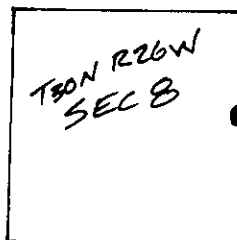
This "corner record" was filed for record on Oct 14, 1997

was noted on the cross-index plat and is assigned page No. 9986

in book No. \_\_\_\_\_

Coral M. Cummings  
County Official

Section



Cross Index No. 1/4 Cor.S8 T. 30 N., R. 26 W., PMM

• THIS CORNER