

CERTIFIED CORNER RECORDATION

Corner 1/4 Cor. 19 | 20 T. 30 N., R. 26 W., P.M.M. Lincoln County

Record :

1893 GLO Survey by J. Keerl

"Set a post 3 ft. long 3 ins. square 24 ins. in the ground, for 1/4 Sec. Cor. marked 1/4 S on W face, from which:

A Tamarack 7 ins. dia. bears S 18° E, 9 lks. dist., marked 1/4 S BT.

A Pine 7 ins. dia. bears S 16° W, 9 lks. dist., marked 1/4 S BT.

1982 BLM remonumentation by Almanza

"Set an alum. post, 30 ins. long, 2 1/2 ins. dia., 22 ins. in the ground, with alum. cap, from which:

A Larch, 14 ins. dia., bears S 18° E, 9 lks. dist., with an overgrown blaze.

A Pine snag, 10 ins. dia., bears S 16° W, 9 lks. dist., marked 1/4 S BT.

A Fir, 6 ins. dia., bears N 83 3/4° W, 44 lks. dist., marked 1/4 S 19 BT.

1983 Corner Recordation by Associated Surveys.

Found Evidence :

A 3 1/4 inch dia. alum. cap on a 2 1/2 inch dia. pipe 4 ins. above ground with a collar of stone marked as shown below from which:

A Larch 18 1/4 ins. dia. bears N 16° W, 53.65 ft. dist., with visible scribing.

A Larch 15 1/4 ins. dia. bears S 18° E, 5.94 ft. dist., with overgrown face.

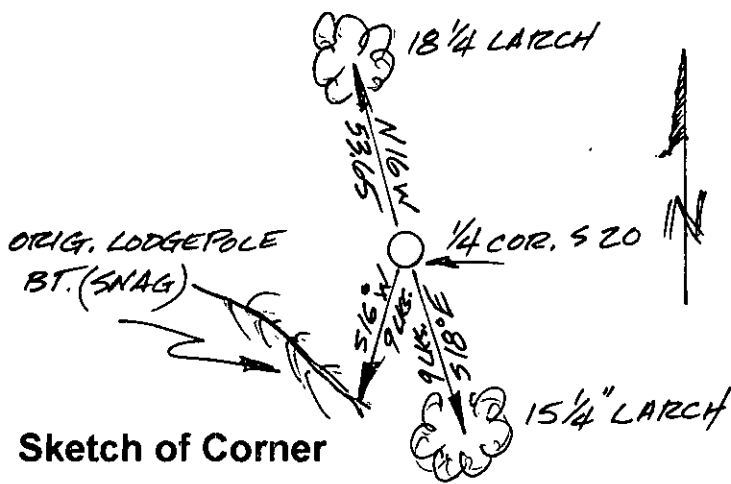
A Lodgepole Pine snag, fallen over, bears S 16° W, 9 lks. dist., with visible scribing.

Painted scribed and overgrown faces red and 6 inch wide bands around both trees.

Attached Land Survey Monument and Bearing Tree signs to both trees.

Set a steel post on line 4 ft. E of corner with attached monument and property line stickers.

Magnetic Declination: 18° East



CERTIFICATION

I, John Damon

certify the information shown herein is true and correct

John Damon
Signature of Ground Party Chief

I, Ken E. Davis

certify that this Corner Record correctly represents work performed by me or under my direction in compliance with the "Corner Recordation Act"

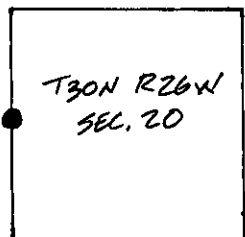
Ken E. Davis
Signature of Surveyor & Seal

Date 10/13/97 Reg. No. 4976-S

Employer: _____

Sketch of Corner

Section



Office of Clerk and Recorder, County of Lincoln

This "corner record" was filed for record on Oct 14, 1997

was noted on the cross-index plat and is assigned page No. 9984

in book No. _____ *Coral M. Cummings*
County Official

Cross Index No. 1/4 Cor. 19|20 T. 30 N., R. 26 W., PMM

• THIS CORNER