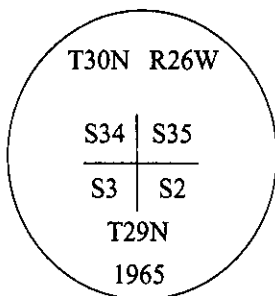


CERTIFIED CORNER RECORDATION

Corner Sec. Cor. Sec. 2,3, 34&35 T. 30N R. 26W P.M., MT Lincoln County

- I. 1893 G.L.O. Original Record by James S. Keerl et al.: Set a granite stone 20x12x4 ins., 15 ins. in the ground for cor. to secs. 2,3,34&35 mkd. with 4 notches on W. and 2 notches on E. edges.
Established four bearing trees:
A fir, 15 ins. diam., bears N19°E, 47 lks. dist., mkd. "T30N R26W S35 BT".
A larch, 12 ins. diam., bears S24°E, 30 lks. dist., mkd. "T29N R26W S2 BT".
A pine, 20 ins. diam., bears S32°W, 24 lks. dist., mkd. "T29N R26W S3 BT".
A larch, 15 ins. diam., bears N40°W, 11 lks. dist., mkd. "T30N R26W S34 BT".

1965 B.L.M. Remonumentation Record by Duane C. Lindenberg: The cor. of secs. 2,3,34&35, on the S. boundary of the Tp., monumented with a granite stone, 20x12x5 ins., firmly set, mkd. as described in the original record and witnessed by the remains of the original bearing trees. At the corner position, set an iron post, 30 ins. long, 2 1/2 ins. in diam., 26 ins. in the ground, with the brass cap mkd. as shown:



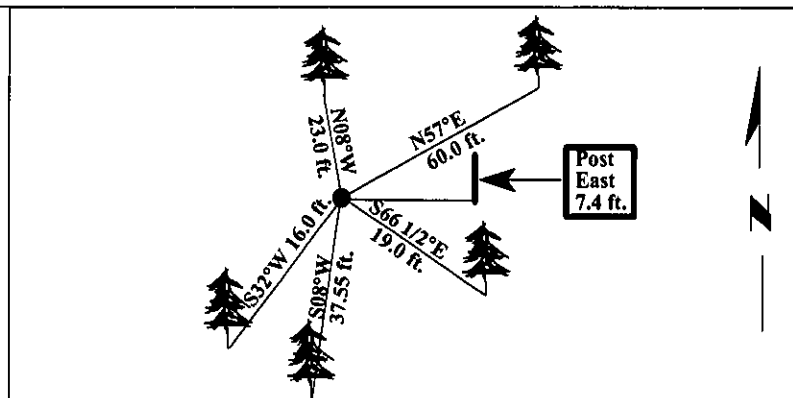
- Established three new bearing trees:
A fir, 12 ins. diam., bears N57 1/2°E, 90 lks. dist., mkd. "T30N R26W S35 BT".
A fir, 4 ins. diam., bears S66 1/2°E, 29 lks. dist., mkd. "X" "BT".
A fir, 4 ins. diam., bears N8 1/2°E, 35 lks. dist., mkd. "X" "BT".
Bury the original stone alongside the iron post.

1983 Certified Corner Recordation by William Condrey No. 5425 S: Found corner and bearing trees as described in the BLM record, in good condition.

- II. Found a 2 1/2 in. diam. iron pipe, protruding 8 ins. above the ground, firmly set, with a 3 1/4 in. diam. brass cap, mkd. as shown:
from which:
A fir, 12 ins. diam., bears N57°E, 60.0 ft. dist., (BLM-record mkd. "T30N R26W S35 BT".)
A fir, 6 ins. diam., bears S66 1/2°E, 19.0 ft. dist., (BLM-record mkd. "X" "BT".)
A pine, 26 ins. diam., bears S32°W, 16.0 ft. dist., (GLO-record mkd. "T29N R26W S3 BT".)
A fir, 4 ins. diam., bears N08°W, 23.0 ft. dist., (BLM-record mkd. "X" "BT".)
Bearing trees burnt, due to fire.

- III. Established one new bearing tree and set one post:
A fir, 8 ins. diam., bears S08°W, 37.55 ft. dist., mkd "T30N R26W S3 BT".
A 6 ft. steel guard post, bears East, on property line, 7.4 ft. dist.
Painted bearing trees and attached Land Survey Monument and Bearing Tree signs.
Attached Land Survey Monument and Property Boundary decals to the guard posts.

Magnetic Declination: 20° East.



SKETCH OF CORNER

CERTIFICATION

I, Joe McElmurry
certify the information shown herein is true and correct.

I, Ronald A. Pearson
certify that this Corner Record correctly represents work performed by me or under my direction in compliance with the "Corner Recordation Act" (70-22-101, et seq., M.C.A.)

Signature of Surveyor & Seal

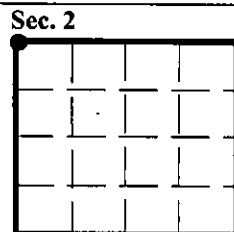
Date: 12/30/96

Reg. No.: 9008LS

Employer: U.S. FOREST SERVICE

Office of Clerk and Recorder, County of LINCOLN. This "corner record" was filed for record on FEB 3, 1997 was noted on the cross-index plat and is assigned page No. 9046, in book No. CORAL M. CUMMINGS

County Official



● - corner this sheet