

## INSTRUCTIONS

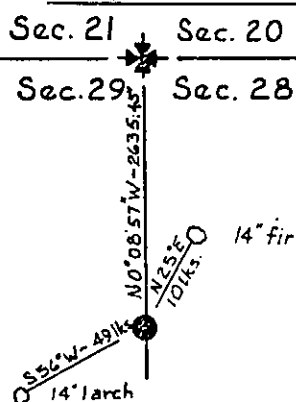
1. Original and/or subsequent record used to evaluate the corner position.
2. Description of evidence found, note discrepancies in the record, state method of establishing lost or obliterated corners.
3. Description of monument and accessories set to perpetuate the corner position.
4. Sketch or corner, show all pertinent data which can best be shown in a sketch example, corner marking, topography ties, position of accessories, etc.
5. Certification must be signed and sealed by Registered Land Surveyor in State of Montana.
6. Fill in Cross Index & Section Diagram at bottom of sheet.

#62-82-5

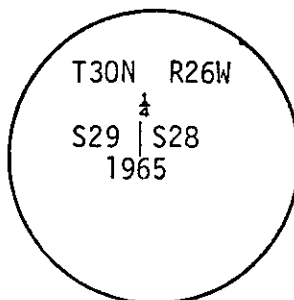
## CERTIFIED CORNER RECORDATION

Corner W $\frac{1}{2}$  Section 28 T. 30N R. 26W P.M.M. Lincoln County

- Set an iron post, 30 ins. long, 2 $\frac{1}{2}$  ins. diam., 26 ins. in the ground, with BLM Brass Cap marked as shown below, from which the original bearing trees:  
A fir, 14 ins. diam., bears N25°E., 10 lks. dist., marked  $\frac{1}{4}$  S.B.T.  
A larch, 14 ins. diam. bears S56°W, 49 lks. dist., with an overgrown blaze. Buried the original stone alongside the iron post.
- Found an iron post with BLM Brass Cap as described above, found both bearing trees.
- Painted all blazes and monuments red.



Bearings  
from  
Solar obs.



SKETCH OF CORNER

## CERTIFICATION

I, \_\_\_\_\_  
certify the information shown herein is true and correct.

Signature Ground Party Chief

I, William Condrey

certify that this Corner Record correctly represents work performed by me or under my direction in compliance with the "Corner Recordation Act" (70-22-101, et seq., M.D.A.)

Signature of Surveyor & Seal

Date: 12-3-82 Reg. No. 5425S

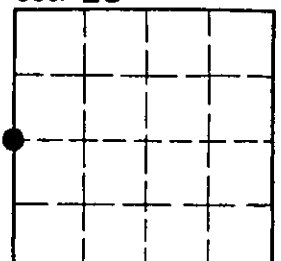
Employer: Associated Surveys, Inc.

Office of Clerk and Recorder, County of Lincoln. This "corner record" was filed for record on the AUGUST 25<sup>th</sup> day of 1983 was noted on the cross-index plat and is assigned page No. 2323, in book No. \_\_\_\_\_

Janet B. Siegel by Betty L. Conces  
County Official deputy

Cross Index No. T9 T. 30N R. 26W P.M.M.

Sec. 28



• - corner this sheet