

INSTRUCTIONS

1. Original and/or subsequent record used to evaluate the corner position.
2. Description of evidence found, note discrepancies in the record, state method of establishing lost or obliterated corners.
3. Description of monument and accessories set to perpetuate the corner position.
4. Sketch or corner, show all pertinent data which can best be shown in a sketch example, corner marking, topography ties, position of accessories, etc.
5. Certification must be signed and sealed by Registered Land Surveyor in State of Montana.
6. Fill in Cross Index & Section Diagram at bottom of sheet.

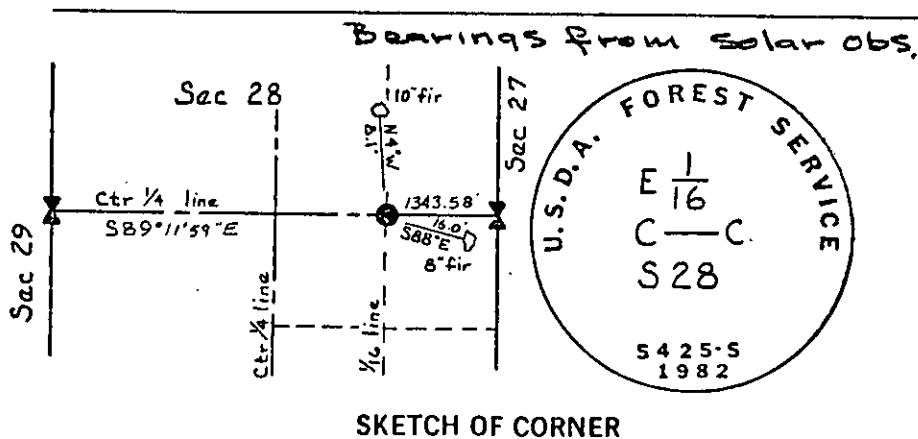
#62-82-5

CERTIFIED CORNER RECORDATION

Corner Center E 1-16 Section 28 T. 30N R. 26W P.M.M. Lincoln County

- I. No original record.
- II. At the corner position, set a 2½ x 30 inch pipe with a 3 inch aluminum cap marked as shown below, raised a 3 ft. dia. mound of stones around the pipe from which the following accessories:
 A fir 8 ins. dia. bears S88°E., 16.0 ft. distance, marked CE 1-16 BT.
 A fir 10 ins. dia. bears N4°W, 8.1 ft. distance, marked CE 1-16 BT.

Painted all blazes red, placed signs on BT's, set a fiberglass post alongside the monument and placed a location poster and survey monument sign on a nearby tree.



CERTIFICATION

I, _____
 certify the information shown herein is true and correct.

Signature Ground Party Chief

I, William Condrey
 certify that this Corner Record correctly represents work performed by me or under my direction in compliance with the "Corner Recordation Act" (70-22-101, et seq., M.C.A.)

Signature of Surveyor & Seal

Date: 12-2-82 Reg. No. 54255

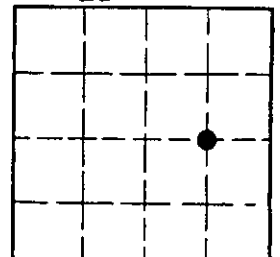
Employer: Associated Surveys, Inc.

Office of Clerk and Recorder, County of Lincoln. This "corner record" was filed for record on the August 25th day of 1983, was noted on the cross-index plat and is assigned page No. 2321, in book No. _____

Janet BF Siegel by Betty L. Conces
 County Official deputy

Cross Index No. T-12 T. 30N R. 26W P.M.M.

Sec. 28



• - corner this sheet