

INSTRUCTIONS

1. Original and/or subsequent record used to evaluate the corner position.
2. Description of evidence found, note discrepancies in the record, state method of establishing lost or obliterated corners.
3. Description of monument and accessories set to perpetuate the corner position.
4. Sketch or corner, show all pertinent data which can best be shown in a sketch example, corner marking, topography ties, position of accessories, etc.
5. Certification must be signed and sealed by Registered Land Surveyor in State of Montana.
6. Fill in Cross Index & Section Diagram at bottom of sheet.

CERTIFIED CORNER RECORDATION

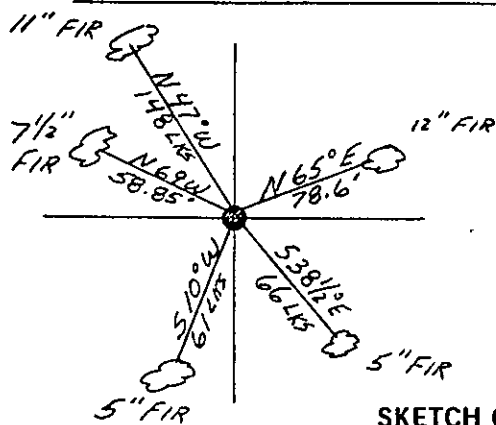
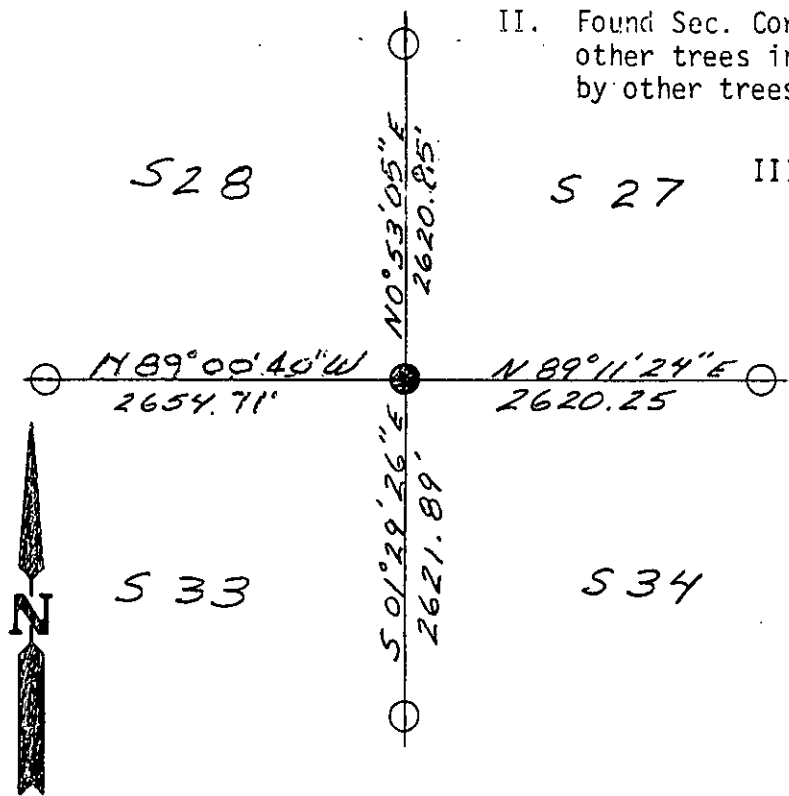
Corner SE COR SEC 28 T. 30 N R. 26 W P.M.M. LINCOLN County

- I. Set a quartzite stone 20x8x8 ins. 15 ins. in the ground for Cor. to Secs. 27, 28, 33 and 34 marked with 1 notch on S. and 3 notches on E. edges, from which: a yellow pine, 13 ins. diam. bears N39½°E, 11 lks dist. marked T30N R26W S27 BT. A yellow pine, 24 ins. diam. bears S48½°E, 32 lks. dist. marked T30N R26W S34 BT. A yellow pine 8 ins. diam. bears S82 3/4°W, 10 lks. dist. marked T30N R26W S33 BT. A yellow pine 12 ins. diam. bears N28°W, 56 lks dist. marked T30N R26W, S28 BT.

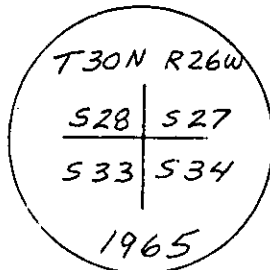
BLM Remonumentation 1965 - Set an iron post, 30 ins. long 2½" diam., 26" in the ground with brass cap marked from which, the original bearing trees: A larch 16 ins., diam. bears N39½°E, 11 lks. dist. marked T30N R26W S27 BT. (Record) A stump, 20 ins. diam., bears S48½°E, 32 lks. dist. marked T30N R26W S34 BT (Record). A stump, 10 ins. diam. bears S82 3/4°W, 10 lks. dist., marked T30N R26W S33 BT (Record). A stump, 15 ins. diam. bears N28°W, 56 lks. dist. marked BT (Record). The new bearing trees: A fir, 5 ins. diam., bears S38½°E, 66 lks. dist., marked T30N R26W S34 BT. A fir, 5 ins. diam., bears S10°W, 61 lks dist., marked T30N R26W S33 BT. A fir 9 ins. diam., bears N47°W, 148 lks. dist. marked T30N R26W, S28 BT. Bury the original stone alongside the iron post.

- II. Found Sec. Cor. as described with Sec. 27 BT Dead. All other trees in good condition except Sec. 28 BT is obscured by other trees growing between it and the corner.

- III. Set 2 new bearing trees: A 7½" fir, bears N69°W at 58.85' marked X BT (Sec. 28). A 12" fir, bears N65°E at 78.6' marked 1/4 S27 BT. Painted monument and all BT's red, posted appropriate signs and set carsonite post near corner.



SKETCH OF CORNER



CERTIFICATION

Michael F. York

I, certify the information shown herein is true and correct.

Michael F. York
Signature Ground Party Chief

William Condrey

I, certify that this Corner Record correctly represents work performed by me or under my direction in compliance with the "Corner Recordation Act" (70-22-101, et seq., M.D.A.)

William Condrey
Signature of Surveyor & Seal

Date: 6-27-83 Reg. No. 5425 S

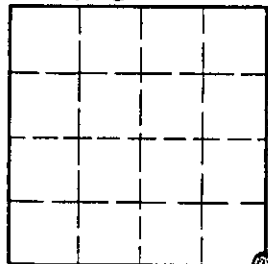
Employer: Associated Surveys, Inc.

Office of Clerk and Recorder, County of LINCOLN. This "corner record" was filed for record on the August 25th day of 1983 was noted on the cross-index plat and is assigned page No. 231.8, in book No. _____

Janet BF Siegel by Betty L. Conces
County Official Deputy

Cross Index No. V 13 T. 30N R. 26 W P.M.M.

Sec. 28



• - corner this sheet