

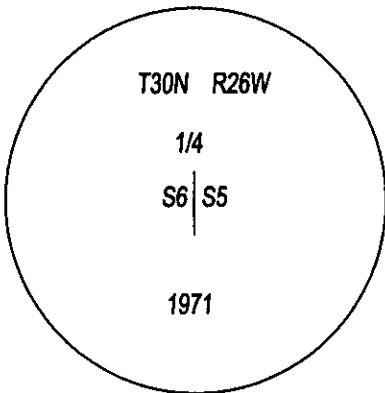
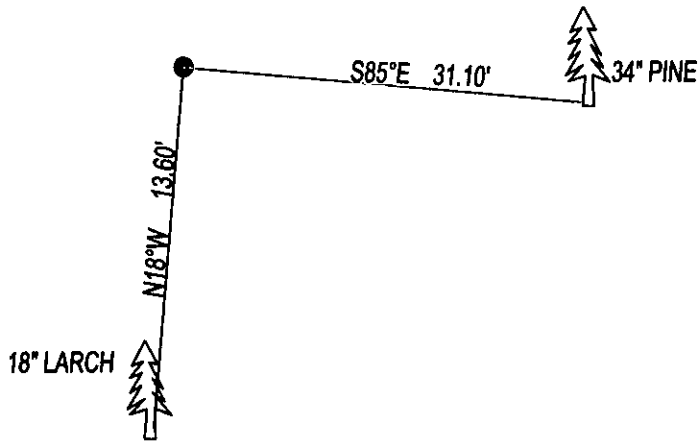
CERTIFIED CORNER RECORDATION

CORNER W1/4 SEC. 6 T. 30N, R. 26W, P.M.M., LINCOLN COUNTY

RECORD B.L.M. 1971: THE 1/4 CORNER FOR SECTIONS 6 MONUMENTED WITH A SANDSTONE
 14x10x6", 9 INCHES INTO THE GROUND WITH 1/4 ON WEST FACE, SET A IRON POST WITH BRASS CAP, FROM WHICH:
 8" DEAD PINE BEARS N21 1/2°W 23 LKS WITH OVERGROWN BLAZE.
 32" PINE BEARS S85°E 47 LKS MARKED 1/4 S5 BT.
 9" LARCH BEARS S20°W 22 LKS MARKED 1/4 S6 BT.

FOUND: 3 1/4" BRASS CAP STAMPED AS SHOWN, FROM WHICH;
 18" LARCH BEARS S18°W 13.60' MARKED 1/4 S6 BT.
 34' PINEBEARS S85°E 31.10' MARKED 1/4 S5 BT.

MAINTENANCE: BUILT A MOUND OF STONE AROUND MONUMENT.
 ATTACHED BT TAG AND PAINTED 6" BAND ON BT.



SKETCH OF CORNER

CERTIFICATION

I, DAN CROFT
 CERTIFY THE INFORMATION SHOWN HEREIN IS TRUE AND CORRECT.

SIGNATURE GROUND PARTY CHIEF

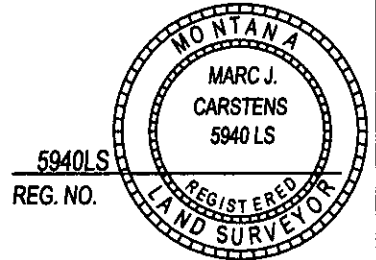
I, MARC J. CARSTENS
 CERTIFY THAT THIS CORNER RECORD CORRECTLY REPRESENTS WORK
 PERFORMED BY ME OR UNDER MY DIRECTION IN COMPLIANCE WITH THE
 "CORNER RECORDATION ACT" (70-22-101, ET SEQ., M.C.A.)


 SIGNATURE OF SURVEYOR & SEAL

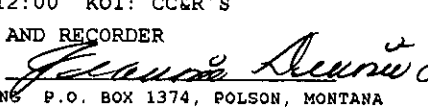
06-20-13

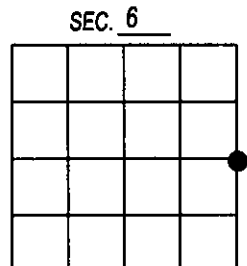
DATE

CARSTENS SURVEYING
 EMPLOYER



5940LS
 REG. NO.

OFFICE OF CLERK AND RECORDER COUNTY OF LINCOLN
 THIS "CORNER RECORD" W/ 245999 BOOK: CCR CC&R'S PAGE: 12040 Pages: 1
 STATE OF MONTANA LINCOLN COUNTY
 AND IS ASSIGNED PAGE NO RECORDED: 07/01/2013 12:00 KOI: CC&R'S
 TAMMY D. LAUER CLERK AND RECORDER
 COUNTY OFFICIAL FEE: \$0.00 BY: 
 FOR: CARSTENS LAND SURVEYING P.O. BOX 1374, POLSON, MONTANA
 CROSS INDEX NO. C-5 T. 30N, R. 26W, P.M.M.



● CORNER THIS SHEET