

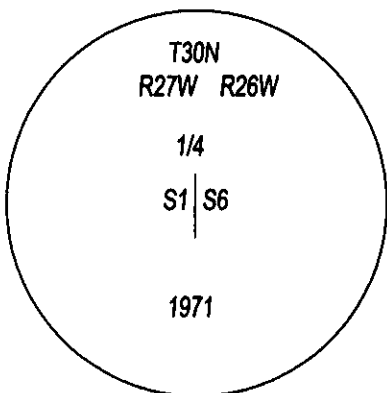
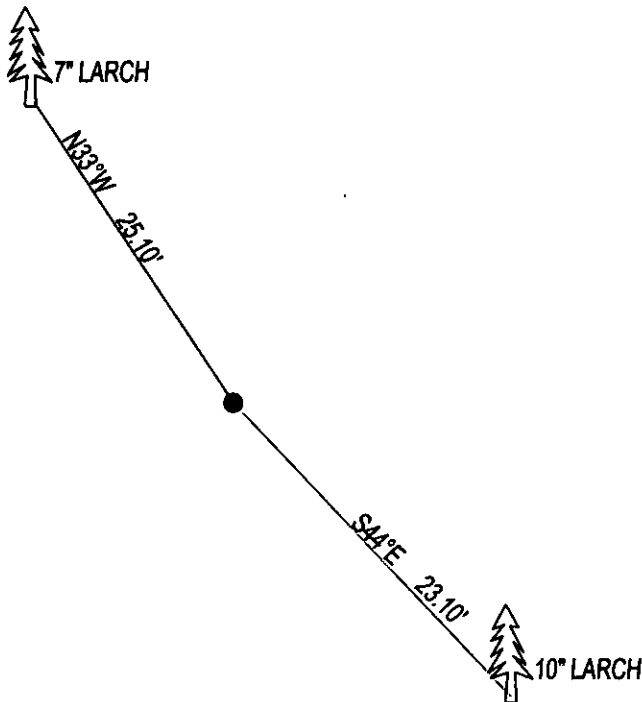
CERTIFIED CORNER RECORDATION

CORNER W1/4 SEC. 6 T. 30N R. 26W P.M.M., LINCOLN COUNTY

RECORD B.L.M. 1971: THE 1/4 CORNER FOR SECTIONS 6 MONUMENTED WITH A LIMESTONE 18x10x6", 12 INCHES INTO THE GROUND WITH 1/4 ON WEST FACE, SET A IRON POST WITH BRASS CAP, FROM WHICH:
 14" FIR BEARS N8°W 42 LKS WITH OVERGROWN BLAZE.
 8" LARCH BEARS S44°E 35 LKS MARKED 1/4 S6 BT.
 6" LARCH BEARS N33 1/2°W 38 LKS MARKED 1/4 S1 BT.

FOUND: 3 1/4" BRASS CAP STAMPED AS SHOWN, FROM WHICH;
 10" LARCH BEARS S44°E 23.10' MARKED 1/4 S6 BT.
 7" LARCH BEARS N33°W 25.10' MARKED 1/4 S1 BT.

MAINTENANCE: BUILT A MOUND OF STONE AROUND MONUMENT.
 ATTACHED BT TAG AND PAINTED 6" BAND ON BT.



SKETCH OF CORNER

CERTIFICATION

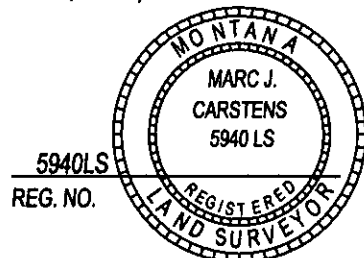
I, DAN CROFT
 CERTIFY THE INFORMATION SHOWN HEREIN IS TRUE AND CORRECT.

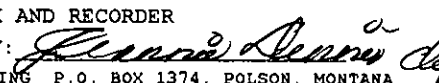
 SIGNATURE GROUND PARTY CHIEF

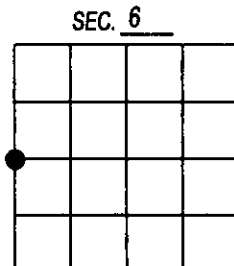
I, MARC J. CARSTENS
 CERTIFY THAT THIS CORNER RECORD CORRECTLY REPRESENTS WORK PERFORMED BY ME OR UNDER MY DIRECTION IN COMPLIANCE WITH THE "CORNER RECORDATION ACT" (70-22-101, ET SEQ., M.C.A.)


 SIGNATURE OF SURVEYOR & SEAL

06-20-13
 DATE
CARSTENS SURVEYING
 EMPLOYER



OFFICE OF CLERK AND RECORDER, COUNTY OF LINCOLN
 THIS "CORNER RECO" 245998 BOOK: CCR CC&R'S PAGE: 12039 Pages: 1
 STATE OF MONTANA LINCOLN COUNTY
 AND IS ASSIGNED PA: RECORDED: 07/01/2013 11:59 KOI: CC&R'S
 TAMMY D. LAUER CLERK AND RECORDER
 COUNTY OFFICIAL FEE: \$0.00 BY: 
 FOR: CARSTENS LAND SURVEYING P.O. BOX 1374, POLSON, MONTANA
 CROSS INDEX NO. C-1 T. 30N R. 26W P.M.M.
 ADOPTED JULY 1, 1981, MONTANA BOARD OF PROFESSIONAL ENGINEERS & LAND SURVEYORS



● CORNER THIS SHEET