

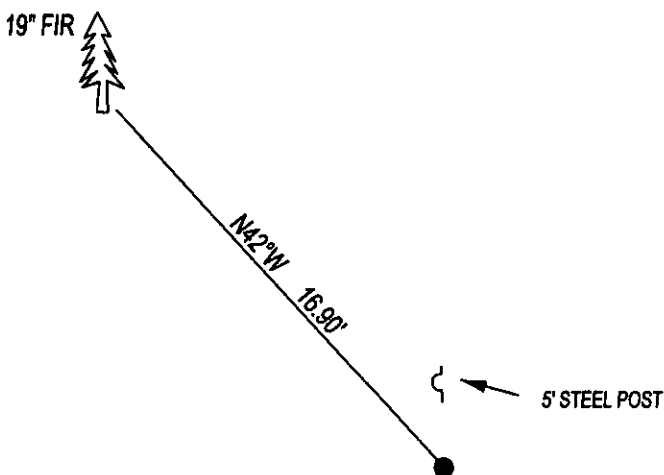
CERTIFIED CORNER RECORDATION

CORNER C1/4 SEC. 6 T. 30N, R. 26W, P.M.M., LINCOLN COUNTY

RECORD: NONE

FOUND: NOTHING

SET: 5/8"x24" REBAR WITH YPC STAMPED AS SHOWN, FROM WHICH;
 19" FIR BEARS N42°W 16.9' SCRIBED RM.
 SET 5' STEEL POST 1 FOOT NORTH OF CORNER.
 ATTACHED BT TAG AND PAINTED 6" BAND ON BT.



SKETCH OF CORNER

CERTIFICATION

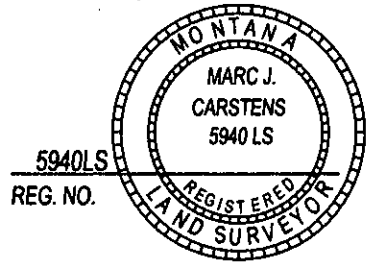
I, DAN CROFT
 CERTIFY THE INFORMATION SHOWN HEREIN IS TRUE AND CORRECT.

SIGNATURE GROUND PARTY CHIEF

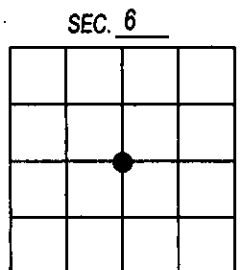
I, MARC J. CARSTENS
 CERTIFY THAT THIS CORNER RECORD CORRECTLY REPRESENTS WORK
 PERFORMED BY ME OR UNDER MY DIRECTION IN COMPLIANCE WITH THE
 "CORNER RECORDATION ACT" (70-22-101, ET SEQ., M.C.A.)

[Signature]
 SIGNATURE OF SURVEYOR & SEAL

06-20-13
 DATE
CARSTENS SURVEYING
 EMPLOYER



OFFICE OF CLERK AND RECORDER COUNTY OF LINCOLN
 THIS "CORNER RECORD" WAS FILED 245995 BOOK: CCR CC&R'S PAGE: 12036 Pages: 1
 W/ STATE OF MONTANA LINCOLN COUNTY
 AND IS ASSIGNED PAGE NO. RECORDED: 07/01/2013 11:56 KOI: CC&R'S
 TAMMY D. LAUER CLERK AND RECORDER
 FEE: \$0.00 BY: *[Signature]*
 COUNTY OFFICIAL FOR: CARSTENS LAND SURVEYING P.O. BOX 1374, POLSON, MONTANA
 CROSS INDEX NO. C-3 T. 30N, R. 26W, P.M.M.
 ADOPTED JULY 1, 1981, MONTANA BOARD OF PROFESSIONAL ENGINEERS & LAND SURVEYORS



● CORNER THIS SHEET