

CERTIFIED CORNER RECORDATION

Corner 1/4 Corner to Sections 16 & 21 T. 30 N. R. 26 W. P.M.M. Lincoln County

RECORD:

Original G.L.O. (July 1893):

Set a granite stone 16x10x6 ins. 11 ins., in the ground, for 1/4 Sec. Cor. marked 1/4 on N. face, and raised a mound of stone 1 1/2 ft. high 2 ft. base along side.
Pits impracticable.

FOUND:

I found a 16" x 10" x 6" brittle granite stone, well set, with 1/4 marked on the North face, with a 2 foot diameter, 1 foot high rock mound 2 feet North.

SET:

I set at the found stone position, an aluminum pipe, 2 1/2" in diameter by 30" long, 20" in the ground, with a Forest Service aluminum cap, 3 1/4" in diameter, surrounded by a raised rock collar. I buried original GLO stone upside down underneath set monument.

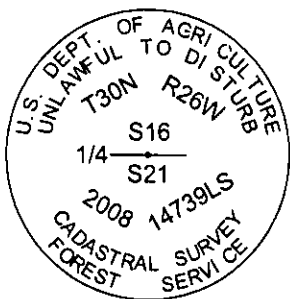
The 3 1/4" diameter aluminum cap is stamped as shown below. From which:

A High-Stumped charred Lodgepole Pine, bears North 15° West 9.8 feet, with bearing tree tag (USFS 54-30 and on the reverse side a "Land Survey Monument" sign (USFS 54-9).

A High-Stumped charred Lodgepole Pine, bears North 75° East 34.5 feet, with bearing tree tag (USFS 54-30 and on the reverse side a "Land Survey Monument" sign (USFS 54-9).

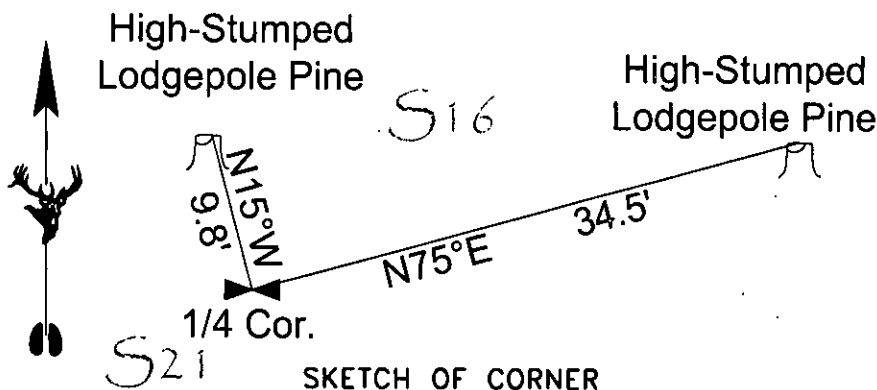
I set a "U" post with reflective decals (USFS P54-1 & P71-10), 1.7 feet East.

I set a "U" post with reflective decals (USFS P54-1 & P71-10), 1.7 feet West.



(Measurement statement):

Measurements made were made with a hand compass (declination 19° E.) and a cloth tape to the center of the root crown of all stumps. Distances are horizontal.



CERTIFICATION

I, _____
certify the information shown herein is true and correct.

Signature Ground Party Chief

Jason M. Smith

I, _____
certify that this Corner Record correctly represents work performed by me or under my direction in compliance with the "Corner Recordation Act" (70-22-101, et seq., M.C.A.)

Signature of Surveyor & Seal

Date: 9-10-08 Reg. No. 14739 LS

Employer: Robert Peccia & Associates

Office of Clerk and Recorder, County of Lincoln This "corner

record" was filed for recor 221677 BOOK: CCR CC&R'S PAGE: 11325 Pages: 1

was noted on the cross-in RECORDED: 09/18/2009 9:55 KOI: CC&R'S

book No. _____ TAMMY D. LAUER CLERK AND RECORDER

FEE: \$0.00

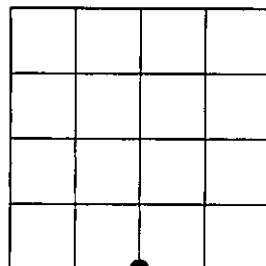
BY: Jason M. Smith

TO: JASON SMITH-SURVEYOR

Cross Index No. N-11 T. 30 N. R. 26 W. PMM

Adopted July 1, 1981, Montana Board of Professional Engineers & Land Surveyors

Sec. 16



• corner this sheet