

CERTIFIED CORNER RECORDATION

Corner 1/4 Corner to Sections 16 & 17 T. 30 N. R. 26 W. P. M. M. Lincoln County

RECORD:

Original G.L.O. (July 1893):

Set a sandstone 16x8x4 ins. 11 ins., in the ground, for 1/4 Sec. Cor. marked 1/4 on W. face, from which
 A pine 6 ins. diam. bears N85 $\frac{1}{2}$ °W 75 lks. distant marked 1 - 4 S. B. T.
 A pine 6 ins. diam. bears S80°E 40 lks. distant marked 1 - 4 S. B. T.

FOUND:

I found no original evidence. The "Brush Creek" fire came through this area in the summer of 2007. Proportioned position relates well with GLO topographic calls.

SET:

I set at single proportion (midpoint) between the section corner to the South and the closing corner to the North (See diagram below), an aluminum pipe, 2 $\frac{1}{2}$ " in diameter by 30" long, 20" in the ground, with a Forest Service aluminum cap, 3 $\frac{1}{4}$ " in diameter, surrounded by a raised rock collar.

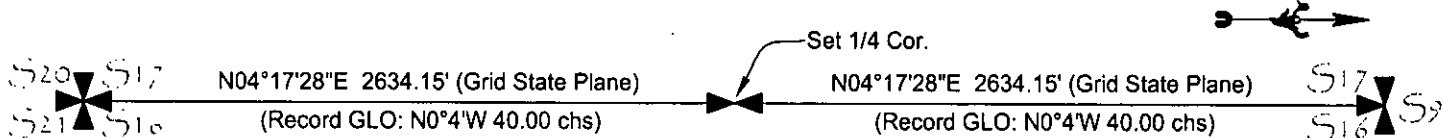
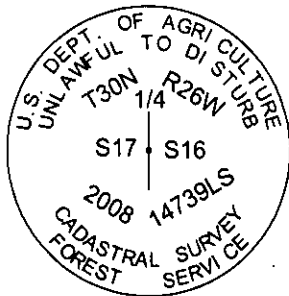
The 3 $\frac{1}{4}$ " diameter aluminum cap is stamped as shown below. From which:

A 6" diameter Douglas Fir, bears North 07° West 30.0 feet scribed "1/4 S17 BT", with bearing tree tag (USFS 54-30) and on the reverse side a "Land Survey Monument" sign (USFS 54-9).

A 6" diameter Larch, bears North 83° East 67.4 feet scribed "1/4 S16 BT", with bearing tree tag (USFS 54-30) and on the reverse side a "Land Survey Monument" sign (USFS 54-9).

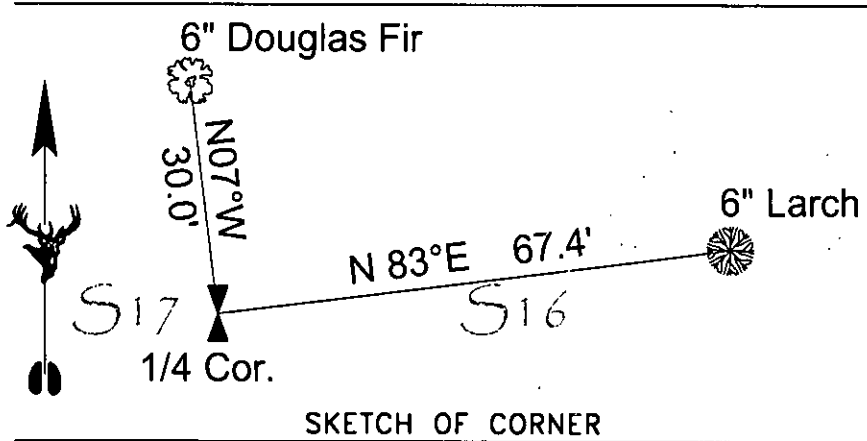
I set a "U" post with reflective decals (USFS P54-1 & P71-10), 2.2 feet North.

I set a "U" post with reflective decals (USFS P54-1 & P71-10), 2.1 feet South.



(Measurement statement):

Measurements made were made with a hand compass (declination 19° E.) and GPS to the center of the root crown of all trees. Distances are horizontal.



CERTIFICATION

I, _____
 certify the information shown herein is true and correct.

Signature Ground Party Chief

Jason M. Smith

I, _____
 certify that this Corner Record correctly represents work performed by me or under my direction in compliance with the "Corner Recordation Act" (96-22-101, et seq., M.C.A.)

Signature of Surveyor & Seal

Date: 9-10-08 Reg. No. 14739 LS
 Employer: Robert Feccia & Associates

Office of Clerk and Recorder, County of Lincoln. This "corner record" was filed for r 221676 BOOK: CCR CC&R'S PAGE: 11324 Pages: 1
 was noted on the cross STATE OF MONTANA LINCOLN COUNTY
 book No. _____ RECORDED: 09/18/2009 9:50 KOI: CC&R'S 1
 TAMMY D. LAUER CLERK AND RECORDER
 FEE: \$0.00 BY: Jason M. Smith
 TO: JASON SMITH-SURVEYOR

Cross Index No. L-9 T. 30 N. R. 26 W. PMM

Sec. 16

Adopted July 1, 1981, Montana Board of Professional Engineers & Land Surveyors

• corner this sheet