

# CERTIFIED CORNER RECORDATION

Corner Corner to Sections 16, 17, 20 & 21 T. 30 N. R. 26 W. P.M.M. Lincoln County

## RECORD:

### Original G.L.O. (July 1893):

Set a sandstone 16x8x6 ins. 11 ins., in the ground, for Cor. to Secs. 16, 17, 20 & 21 marked 3 notches on S. and 4 notches on E. edges, and raised a mound of stone 1 1/2 ft. high 2 ft. base along side.  
Pits impracticable.  
Trees too small to mark.

### U.S.F.S. Corner Card (September 1971):

Found rock firm in place,  $\equiv$  South  $\equiv$  East.  
Mound of rocks several feet to the East.  
Left yellow "K" tag near by & placed one boundary sign 20' North of corner.

## FOUND:

I found no original evidence.  
I found a "mound of rocks" with flagging as listed on the USFS Corner Card and a quarter blazed tree 20 feet to the North, which related well with the North-South line based on the Quarter Corner to the South and the Closing Corner to the North.

## SET:

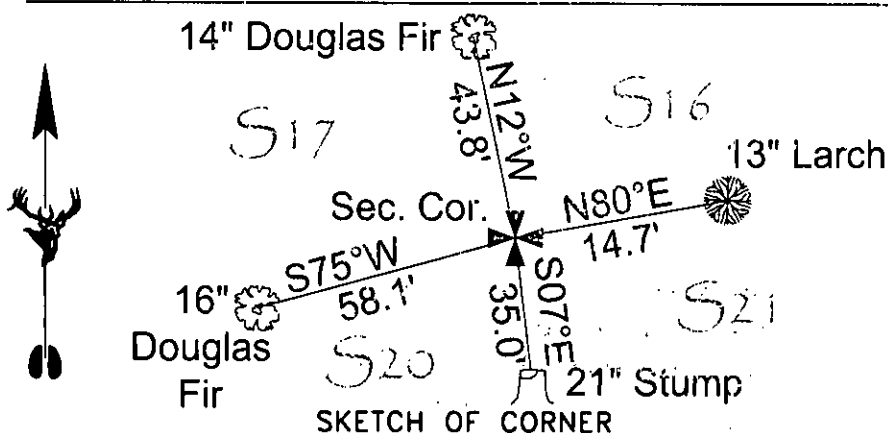
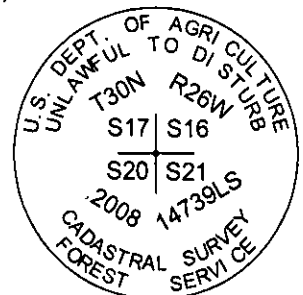
I set at position, based on found evidence, an aluminum monument pipe, 2 1/2" in diameter by 30" long, 20" in the ground, with a Forest Service aluminum cap, 3 1/4" in diameter, surrounded by a raised rock collar.

The 3 1/4" diameter aluminum cap is stamped as shown below. From which:

- A 13" diameter Larch, bears North 80° East 14.7 feet scribed "S16 BT", with bearing tree tag (USFS 54-30) and on the reverse side a "Land Survey Monument" sign (USFS 54-9).
- A 14" diameter Douglas Fir, bears North 12° West 43.8 feet scribed "S17 BT", with bearing tree tag (USFS 54-30) and on the reverse side a "please do not disturb" sign (USFS 54-9).
- A 21" diameter Stump, bears South 07° East 35.0 feet, with bearing tree tag (USFS 54-30) and on the top a "Land Survey Monument" sign (USFS 54-9).
- A 16" diameter Douglas Fir, bears South 75° West 58.1 feet scribed "S20 BT", with bearing tree tag (USFS 54-30) and on the reverse side a "please do not disturb" sign (USFS 54-9).
- I set a "U" post with reflective decals (USFS P54-1 & P71-10), 2.6 feet North.
- I set a "U" post with reflective decals (USFS P54-1 & P71-10), 2.2 feet East.

### (Measurement statement):

Measurements made were made with a hand compass (declination 19° E.) and a cloth tape to the center of the root crown of all trees/stumps. Distances are horizontal.



### CERTIFICATION

I, \_\_\_\_\_, certify the information shown herein is true and correct.

Signature Ground Party Chief

Jason M. Smith

I, \_\_\_\_\_, certify that this Corner Record correctly represents work performed by me or under my direction in compliance with the "Corner Recordation Act" (70-22-101, et seq., M.C.A.)

Signature of Surveyor & Seal

Date: 9-10-08 Reg. No. 14739 LS

Employer: Robert Peccia & Associates

Office of Clerk and Recorder, County of Lincoln, This "corner

record" was filed for record 221675 BOOK: CCR CC&R'S PAGE: 11323 Pages: 1

was noted on the cross-index STATE OF MONTANA LINCOLN COUNTY RECORDED: 09/18/2009 9:45 KOI: CC&R'S

book No. \_\_\_\_\_ TAMMY D. LAUER CLERK AND RECORDER

FEE: \$0.00

BY: *Jason M. Smith*

TO: JASON SMITH-SURVEYOR

Cross Index No. N-9 T. 30 N. R. 26 W. PMM

Adopted July 1, 1981, Montana Board of Professional Engineers & Land Surveyors

Sec. 16


• corner this sheet