

CERTIFIED CORNER RECORDATION

SEC. COR.

CORNER S14,S15,S22,S23T. 29 N., R. 34 W., P.M.M. LINCOLN COUNTY

RECORD:

Refer to attached Corner Recordation Form N-17 T29N R34W

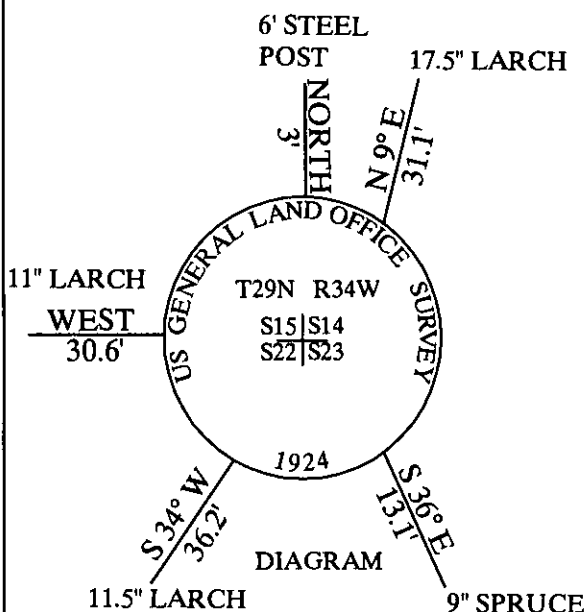
FOUND EVIDENCE:

- A 2 1/2 inch dia. Brass Cap stamped as shown
- A 11.5 inch DBH Larch with overgrown scribe bears S34°W 36.2 ft dist.
- A 11 inch DBH Larch scribed S15 BT bears West 30.6 ft. dist.
- A 17.5 inch DBH Larch scribed S14 BT bears N9°E 31.1 ft. dist.

PERPETUATION:

- Established one new bearing tree and a 6 foot steel post for found monument
From which
- A 9 inch DBH Spruce scribed T29N R34W S23 BT bears S36°E 13.1 ft. dist.
- A 6 foot steel post 3 feet north of corner
- Painted 6 inch wide band and attached bearing tree tag to trees

MAGNETIC DECLINATION: 16° E



CERTIFICATION

I, George Clark
 Certify the information shown herein is true and correct
 Signature of Ground Party Chief
 I, [Signature]
 certify that this Corner Record correctly represents work
 performed by me or under my direction in compliance with the
 "Corner Recordation act"
 (70-22-101, 1st Sec. M.C.A.)
 Signature of Surveyor & Seal 9975-5
 Date 11/12/2009 Reg. No. 4975-5
 Employer Davis Surveying Inc

SKETCH OF CORNER

Office of Clerk and Recorder, County of _____
 This "corner re 222843 BOOK: CCR CC&R'S PAGE: 11338 Pages: 1
 was noted on t STATE OF MONTANA LINCOLN COUNTY
 No. RECORDED: 11/12/2009 2:50 KOI: CC&R'S
 In book No. TAMMY D. LAUER CLERK AND RECORDER
 FEE: \$0.00 BY: [Signature]
 TO: DAVIS SURVEYING, INC. P.O. BOX 896, TROY, MONTANA 59935

SECTION

15	14
22	23

Cross Index No. T. 29 N., R. 34 W., P.M.M.

THIS CORNER