

# CERTIFIED CORNER RECORDATION

CORNER 1/4 S14/S23 T. 29 N., R. 34 W., P.M.M. LINCOLN COUNTY

## RECORD:

Refer to attached Corner Recordation Form N-16 T29N R34W

## FOUND EVIDENCE:

A 2 1/2 inch dia. Brass Cap stamped as shown.

A 12 inch DBH Larch scribed S14 BT bears N17°W 87 ft. dist.

## PERPETUATION:

Established one new bearing tree and two 6 foot steel post for found monument  
From which

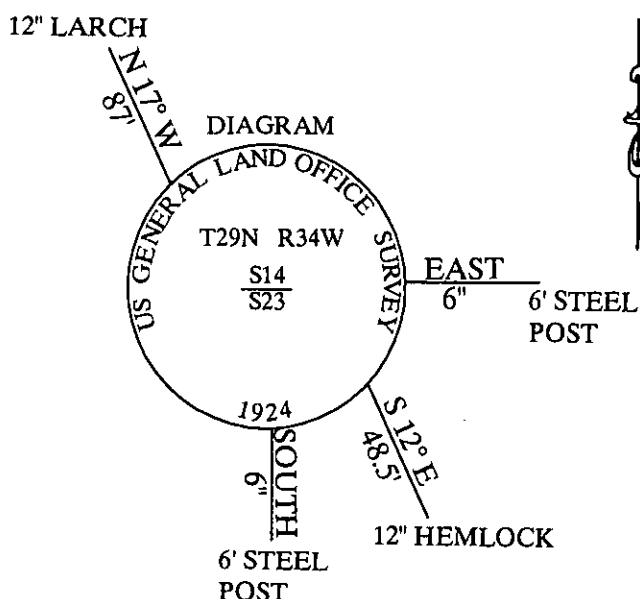
A 12 inch DBH Hemlock scribed S23 BT bears S12°E 48.5 ft. dist.

A 6 foot steel post 6 inches east of corner

A 6 foot steel post 6 inches south of corner

Painted 6 inch wide band and attached bearing tree tag to tree

MAGNETIC DECLINATION: 16° E

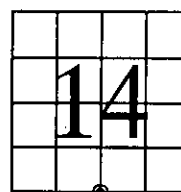


**CERTIFICATION**  
I, George Clark  
Certify the information shown herein is true and correct  
Signature of Ground Party Chief  
I, George Clark  
certify that this Corner Record correctly represents work  
performed by me or under my direction in compliance with the  
"Corner Recordation Act"  
(70-22-101, et seq., M.C.A.)  
Signature of Surveyor & Seal [Signature]  
Date: 11/2/09 Reg. No. 4975-S  
Employer: Davis Surveying Inc

## SKETCH OF CORNER

Office of Clerk and Recorder, County of \_\_\_\_\_  
This "corner" 222844 BOOK: CCR CC&R'S PAGE: 11339 Pages: 1  
was noted: STATE OF MONTANA LINCOLN COUNTY  
No. \_\_\_\_\_ RECORDED: 11/12/2009 2:55 KOI: CC&R'S  
In book No. TAMMY D. LAUER CLERK AND RECORDER  
FEE: \$0.00 BY: [Signature]  
TO: DAVIS SURVEYING, INC. P.O. BOX 896, TROY, MONTANA 59935

## SECTION



Cross Index No. \_\_\_\_\_ T. 29 N., R. 34 W., P.M.M.

THIS CORNER