

9 CERTIFIED CORNER RECORDATION

CORNER 1/4 S12/S13 T. 29 N., R. 34 W., P.M.M. LINCOLN COUNTY

RECORD:

Refer to attached Corner Recordation Form J-23 T29N R34W

FOUND EVIDENCE:

A 2 1/2 inch dia. Brass Cap Stamped as shown

A dead 13 inch DBH Douglas Fir scribed 1/4 S13 BT bears S76°E 28.3 ft. dist.

A 15 inch DBH Douglas Fir scribed 1/4 S12 BT bears N23°E 50 ft. dist.

PERPETUATION:

Established one bearing tree and two 6 foot steel posts for the found monument
From which

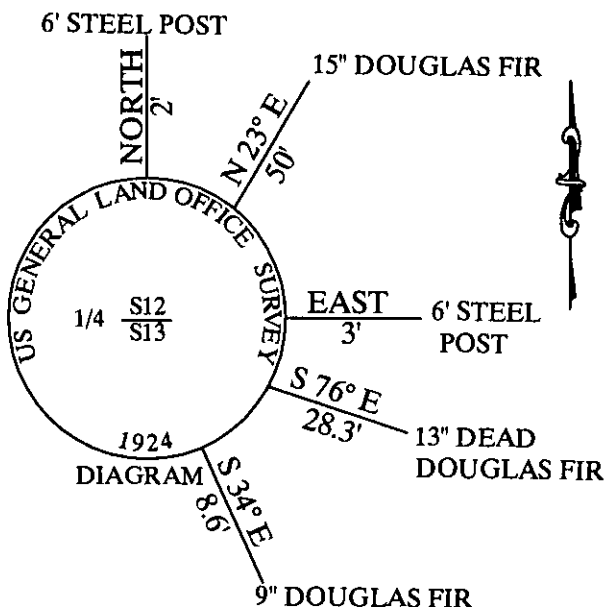
A 9 inch DBH Douglas Fir scribed T29N R33W S13 1/4 BT bears S34°E 8.6 feet dist.

A 6 foot steel post 3 feet east of corner

A 6 foot steel post 2 feet north of corner

Painted 6 inch wide band and attached bearing tree tag to the bearing tree.

MAGNETIC DECLINATION: 16° E



CERTIFICATION

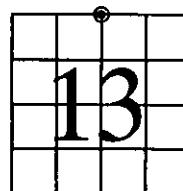
I, Charles L. Davis
Certify the information shown herein is true and correct
Signature of Ground Party Chief

I, Charles L. Davis
certify that this Corner Record correctly represents work
performed by me or under my direction in compliance with the
"Corner Recordation Act"
(70-22-101 M.C.A.)
Signature of Surveyor & Seal
Date: 11/10/2009 Reg. No. 314775-S
Employer: DAVIS Surveying Inc

SKETCH OF CORNER

Office of Clerk: 222803 BOOK: CCR CC&R'S PAGE: 11335 Pages: 1
This "corner" was noted on
No. _____
In book No. _____
TO: DAVIS SURVEYING, INC. P.O. BOX 896, TROY, MONTANA 59935
BY: Seannia D. Lauer
County Official

SECTION



Cross Index No. T. 29 N., R. 34 W., P.M.M.

THIS CORNER