

3

CERTIFIED CORNER RECORDATION

CORNER 1/4 S15/S14 T. 29 N., R. 34 W., P.M.M. LINCOLN COUNTY

RECORD:

Refer to attached Corner Recordation Form L-17 T29N R34W

FOUND EVIDENCE:

A 2 1/2 inch dia. Brass Cap Stamped as shown

A 12 inch DBH Cedar with overgrown scribe bears N20°W 5.9 ft. dist.

PERPETUATION:

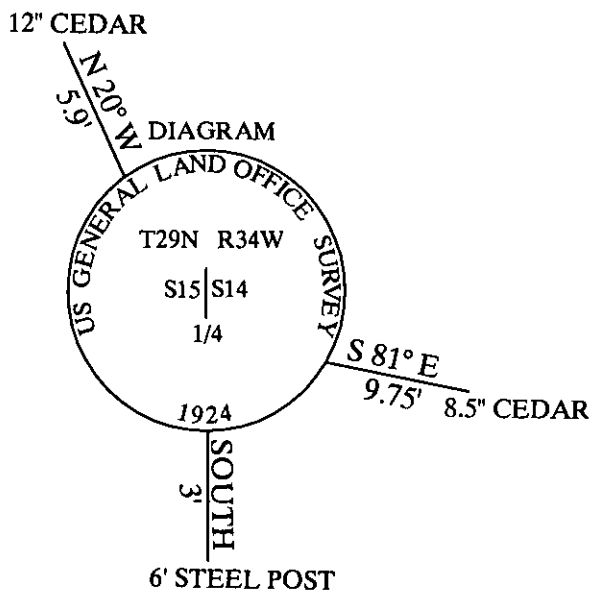
Established one bearing tree and a 6 foot steel post for the found monument
From which

A 8.5 inch DBH Cedar scribed 1/4 S14 BT bears S81°E 9.75 ft. dist.

A 6 foot steel post 3 feet south of corner

Painted 6 inch wide bands and attached bearing tree tags to trees.

MAGNETIC DECLINATION: 16° E



CERTIFICATION

I, Calvin H. Hearn
Certify the information shown herein is true and correct
Signature of Ground Party ChiefI, Ann E. Hearncertify that this Corner Record correctly represents work
performed by me or under my direction in compliance with the
"Corner Recordation Act"

(70-22-101 Mont. Seq. M.C.A.)

Signature of Surveyor & Seal

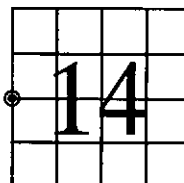
Date: 11/10/09 Rec. No. 4915-5Employer: DAVIS Surveying Inc

SKETCH OF CORNER

Office of 222797 BOOK: CCR CC&R'S PAGE: 11329 Pages: 1
This "corn" STATE OF MONTANA LINCOLN COUNTY
was noted RECORDED: 11/10/2009 3:30 KOI: CC&R'S
No. TAMMY D. LAUER CLERK AND RECORDER
In book N FEE: \$0.00 BY: Tammy D. Lauer
TO: DAVIS SURVEYING, INC. P.O. BOX 896, TROY, MONTANA 59935

County Official

SECTION

Cross Index No. T. 29 N., R. 34 W., P.M.M.

THIS CORNER