

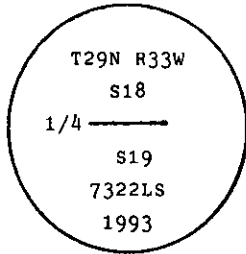
INSTRUCTIONS

1. Original and/or subsequent record used to evaluate the corner position.
2. Description of evidence found, note discrepancies in the record, state method of establishing lost or obliterated corners.
3. Description of monument and accessories set to perpetuate the corner position.
4. Sketch of corner, show all pertinent data which can best be shown in a sketch example, corner marking, topography (ies, position of accessories, etc.
5. Certification must be signed and sealed by Land Surveyor registered in the State of Montana.
6. Fill in Cross Index & Section Diagram at bottom of sheet.

**CERTIFIED CORNER RECORDATION**

Corner S 1/4 of Sec. 18 T. 29 N. R. 33 W. P.M.M. Lincoln County

- I. 1903 original G.L.O. record by J. P. Henselwood: Set a shale stone, 20 X 12 X 8 ins., 14 ins. in the ground, for 1/4 sec. cor., marked 1/4 on N. face; and raised a mound of stone, 2 ft. base, 1 1/2 ft. high, N. of corner.
- No bearing trees established.
- II. Found a loose stone, 7 X 15 x 10 ins., laying on ground surface, marked "1/4".
- III. At the position determined by single proportionate measurement, set a 2 1/2 ins. dia. aluminum pipe, 30 ins. long, 26 ins. in the ground, with a 3 1/4 in. diam. aluminum cap, marked as shown:



Bury original stone alongside new monument and raise a collar of stone around pipe.

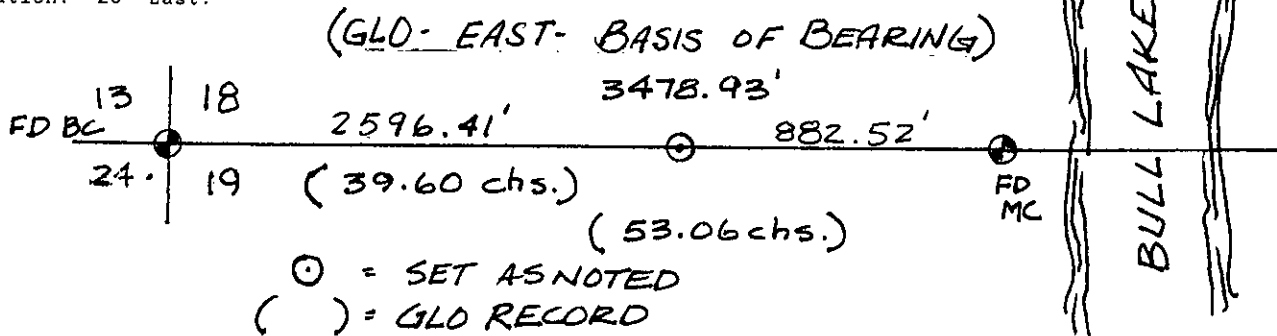
Established two new bearing trees:

- A fir, 12 ins. dia., bears S49° W, 25.2 ft. dist., mkd. 1/4 S19 BT.
  - A fir, 13 ins. dia., bears N49° W, 45.5 ft. dist., mkd. 1/4 S18 BT.
- (Both bearings are 49°.)

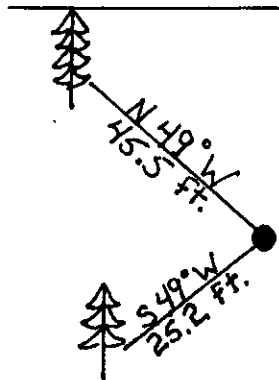
Painted a red band around bearing trees and attached Land Survey Monument and Bearing Tree signs.

No guard post established.

Magnetic Declination: 20° East.



⊙ = SET AS NOTED  
( ) = GLO RECORD



SKETCH OF CORNER



CERTIFICATION

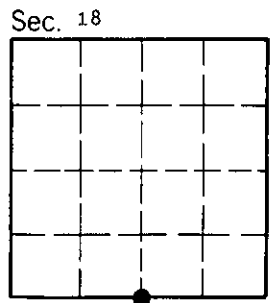
I, Kenneth Kern  
certify the information shown herein is true and correct.  
Kenneth R Kern  
Signature Ground Party Chief

I, Alvah F. Hughes  
certify that this Corner Record correctly represents work performed by me or under my direction in compliance with the "Corner Recordation Act" (70-22-10) of sec. M.C.A.  
Alvah F. Hughes  
Signature of Surveyor & Seal  
7322 LS

Date: 12/15/93 Reg. No. 7322LS  
U.S. FOREST SERVICE

Office of Clerk and Recorder, County of Lincoln. This "corner record" was filed for record on Jan 19, 1993 was noted on the cross-index plat and is assigned page No. 5323, in book No. \_\_\_\_\_

Coral M. Cummings, DB  
County Official



Cross Index No. N-03 T. 29 N R. 23 W PMM