

CERTIFIED LAND CORNER RECORDATION
(REFERENCE FSH 5681.65)

DESCRIPTION OF CORNER EVIDENCE FOUND, AND ORIGINAL RECORD (IF KNOWN)

Nothing Found.

DESCRIPTION OF MONUMENT AND ACCESSORIES ESTABLISHED
TO PERPETUATE THE ORIGINAL LOCATION OF THIS CORNER:

Set Brass Cap Monument for North $\frac{1}{4}$ corner of Section 20, Date of work: June 10, 1970
T.29N, R33 WPM, set by Proration between NE corner and M.C., References: 12" Fir
Marked S17BT $\frac{1}{4}$ bearing N36°W, 18.60 feet and 15" Fir Marked S20BT $\frac{1}{4}$ bearing
S31°W, 28.45 feet.

Set Brass Cap Monument for Witness corner to South $\frac{1}{4}$ corner of Section 20, T.29N.,
R.33 WPM, set by proration between SE corner and M.C., said Witness corner set
on south line of said Section 20, 198.0 feet west of the $\frac{1}{4}$ corner location.
References: 8" Cedar, Marked BTWC bearing N5°W, 1.78 feet and 4" Tamarack,
Marked BTWC bearing N55°E, 4.72 feet.

SKETCH, WITH COURSE AND DISTANCE TO ADJACENT CORNERS IF DETERMINED IN THIS SURVEY.
(MAY SKETCH OR PASTE REPRODUCTION ON REVERSE SIDE.)

See Attached Sheet.

Surveyor's Seal

DIAGRAM OF CORNER:

I, Charles F. Buenham
certify that the information shown herein is true and
correct.

N.

Charles F. Buenham
Signature of Ground Party Chief

I, Philip L. Sargent
certify that I have carefully performed or reviewed the
work done on the diagrammed corner as reported on this
recording form and approve the same.

= Corner recorded on the sheet

Philip L. Sargent
Signature of Surveyor

2235-5
Registration Number

Office of Clerk and Recorder, County of Lincoln

This "corner record" was filed for record on the 15th day of June 1970, was noted on the cross-index plat and is
assigned page No. 207, in book No. 1

ELEANOR L. VAUGHN, By:
County Official

Cross Index No. A-7 T. 29 R. 33 Mer.
R-7

Sec. 20 T.29
 LINCOLN C
 MONTA

Found
 M.C.

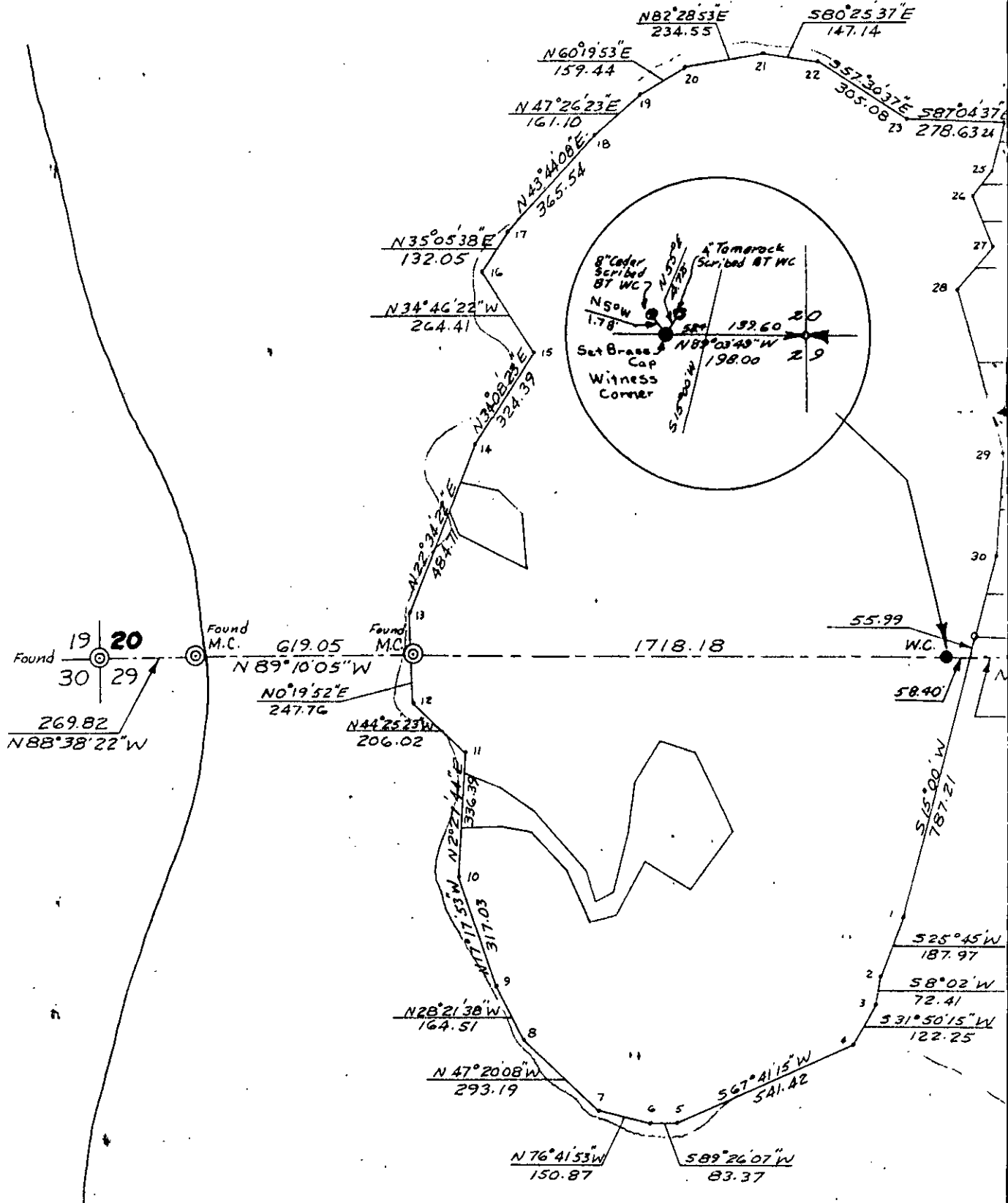
1567.86

NB



BULL LAKE

Scale: 1" = 400'
 Found Corners are Brass Cap
 Monuments set by Dept of Int.,
 U.S.B.L.M.



N. R. 33 W. P.M.

OUNTY

ANA

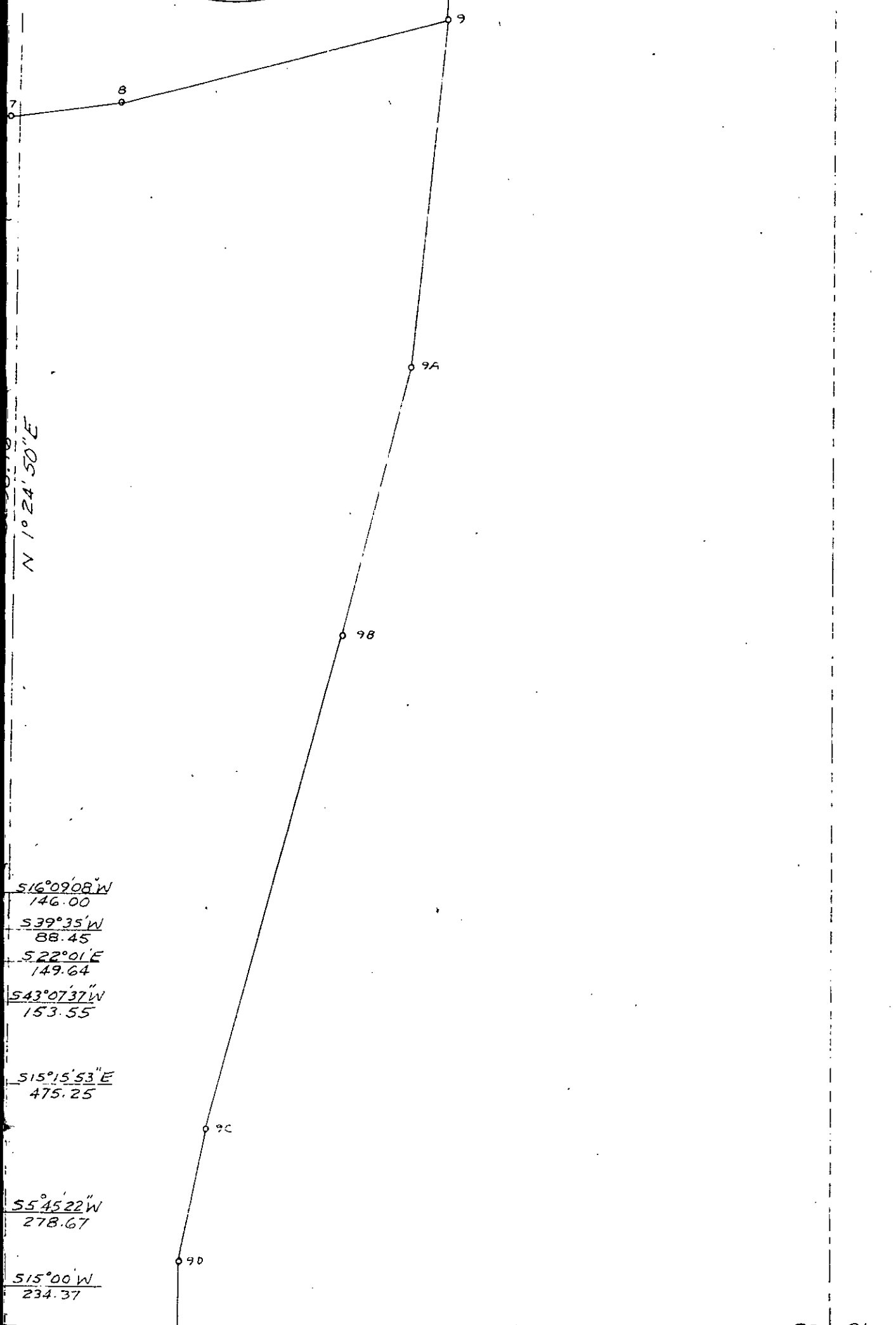
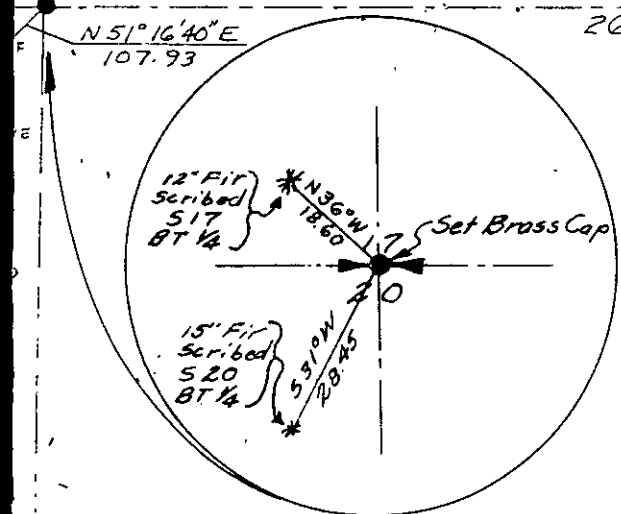
01'56" W

N 51° 16' 40" E
107.93

2651.76

17 16

19 Found
20 21



N 1° 24' 50" E

S 16° 09' 08" W
146.00
S 39° 35' W
88.45
S 22° 01' E
149.64
S 43° 07' 37" W
153.55

S 15° 15' 53" E
475.25

S 55° 45' 22" W
278.67

S 15° 00' W
234.37

S 89° 03' 49" W
139.60

2694.81

20 21
Found
28

